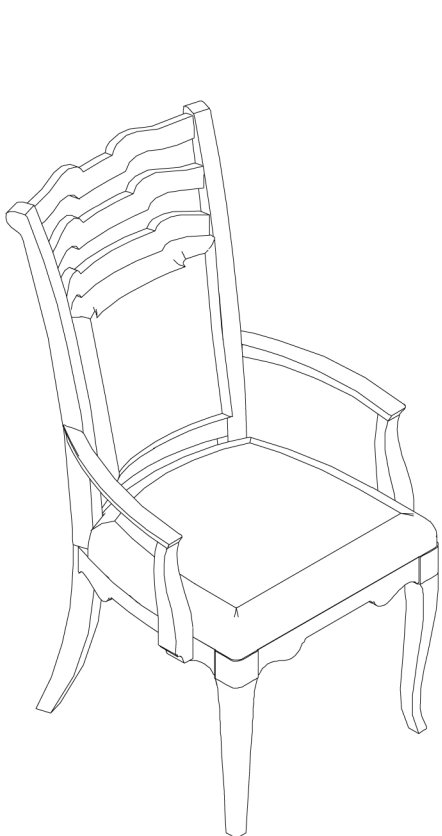
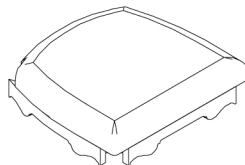


DESCRIPTION/ LA DESCRIPTION/ DESCRIPCIÓN: UPH Arm Chair 2/ctn / Chaise à accoudoirs 2 pièce / Silla con brazos 2 unid.



A

x1 Chair Back *
x1 Dossier de chaise
x1 Respaldo de la silla



B

x1 Seat Cushion *
x1 Coussin de siège
x1 cojín del asiento



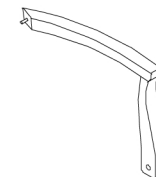
C

x2 Front Leg *
x2 Patte avant
x2 Pata delantera



D

x1 Left Armrest *
x1 Accoudoir de gauche
x1 Brazo izquierda



E

x1 Right Armrest *
x1 Accoudoir de droite
x1 Brazo derecha



F

x2 Allen bolt Ø5/16"*2" *
x2 Vis à tête creuse hexagonale Ø5/16"*2"
x2 Perno Allen Ø5/16"*2"



G

x4 Allen bolt Ø5/16"*3" *
x4 Vis à tête creuse hexagonale Ø5/16"*3"
x4 Perno Allen Ø5/16"*3"



H

x2 Allen bolt Ø5/16"*1-1/2" *
x2 Vis à tête creuse hexagonale Ø5/16"*1-1/2"
x2 Perno Allen Ø5/16"*1-1/2"



I

x12 Lock washer Ø5/16" *Ø12*3mm *
x12 Rondelle de blocage Ø5/16" *Ø12*3mm
x12 Arandela de Seguridad Ø5/16" *Ø12*3mm



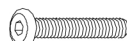
J

x12 Flat Washer Ø5/16"x19x2mm *
x12 Rondelle plate Ø5/16"x19x2mm
x12 Arandela plana Ø5/16"x19x2mm



K

x4 Ø5/16"*12 Nut *
x4 Ø5/16"*12 Écrou
x4 Ø5/16"*12 Tuerca



L

x2 Allen bolt Ø1/4"*1-3/4" *
x2 Vis à tête creuse hexagonale Ø1/4"*1-3/4"
x2 Perno Allen Ø1/4"*1-3/4"



M

x2 Flat Washer Ø1/4"x13x2mm *
x2 Rondelle plate Ø1/4"x13x2mm
x2 Arandela plana Ø1/4"x13x2mm



N

x1 12mm Open Wrench *
x1 12mm Clé à fourche
x1 12mm Llave de boca

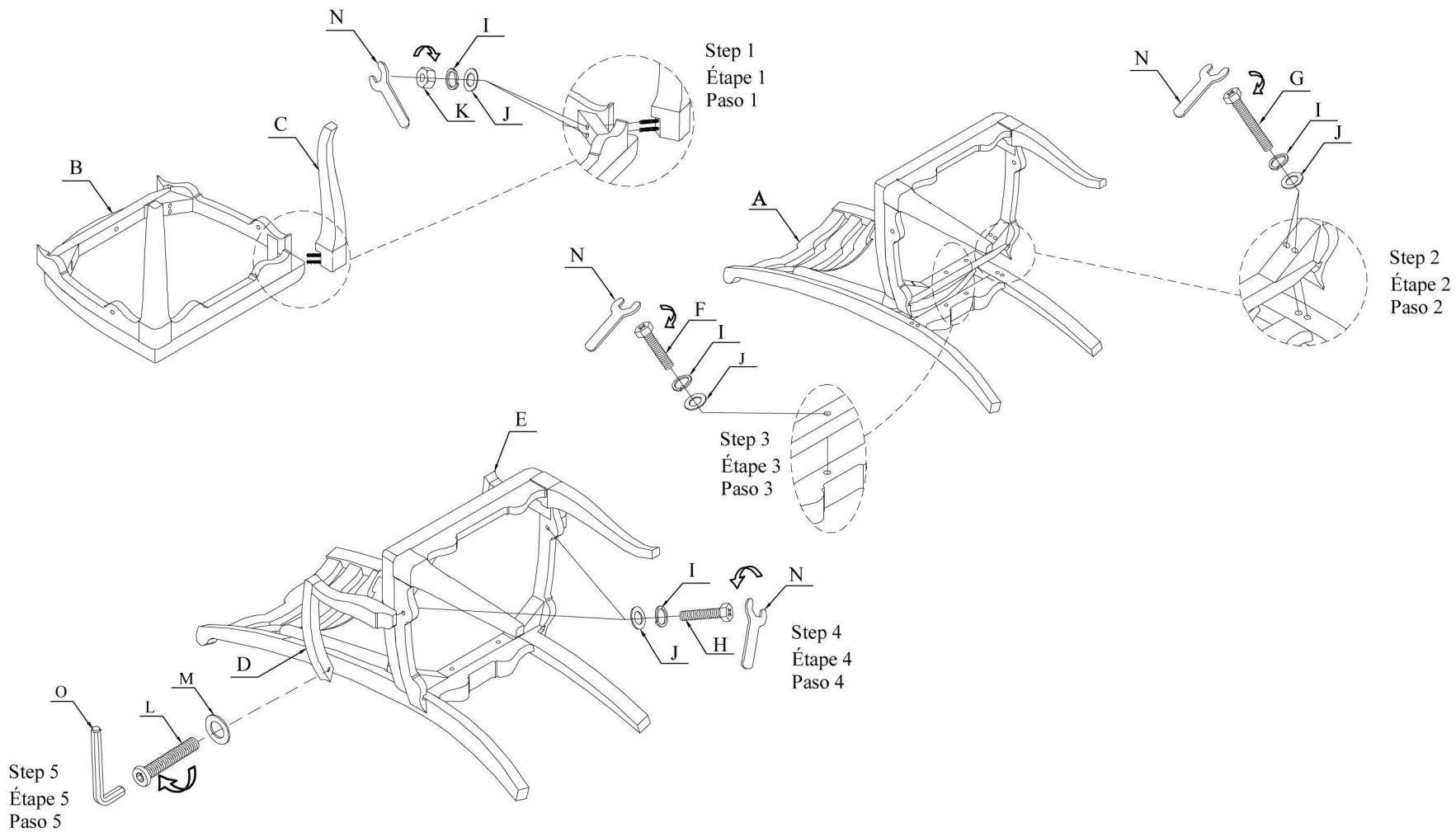


O

x1 Allen Key 4mm *
x1 Clé hexagonale 4mm
x1 Llave Allen 4mm

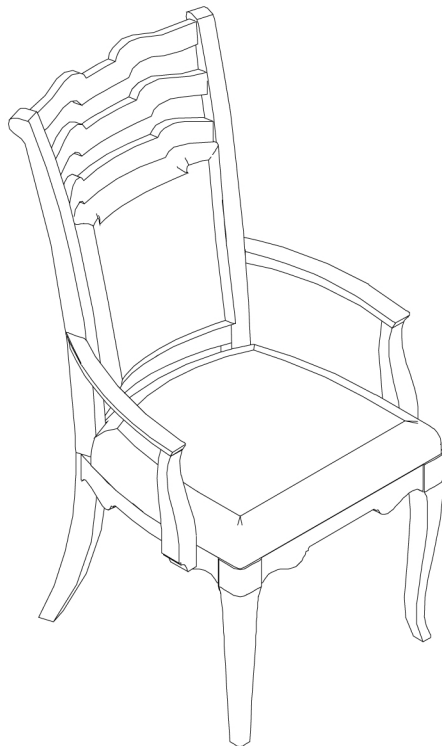
*Replaceable Part

DESCRIPTION/ LA DESCRIPTION/ DESCRIPCIÓN: UPH Arm Chair 2/ctn / Chaise à accoudoirs 2 pièce / Silla con brazos 2 unid.

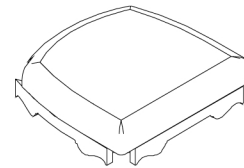


*Replaceable Part

DESCRIPTION/ LA DESCRIPTION/ DESCRIPCIÓN: UPH Arm Chair 2/ctn / Chaise à accoudoirs 2 pièce / Silla con brazos 2 unid.



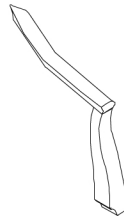
RP293271 BACK *
x1 Chair Back with Cushion
x1 Dossier de chaise
x1 Respaldo de silla



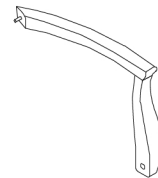
RP293271-FRAME *
x1 Seat frame with Cushion
x1 Côté du cadre
x1 Armazón latera



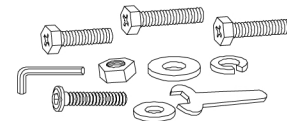
RP293271 LEG *
x2 Front Leg
x2 Patte avant
x2 Pata delantera



RP293271 AIML *
x1 Left Armrest
x1 Accoudoir de gauche
x1 Brazo izquierda



RP293271 AIMR *
x1 Right Armrest
x1 Accoudoir de droite
x1 Brazo derecha



RP293271-HWKIT *
x1 Hardware Kit
x1 Liste des pièces de quincaillerie
x1 Lista de materiales



RC-WH-NAIL *
x4 Plastic Nail
x4 Clou
x4 Clavo

*Replaceable Part