

24"x48" Field Tile - Matte



Ivory
100005403



Beige
100005404



Ecrú
100005405



Grey
100005406

24"x48" Deco Field Tile - Satin



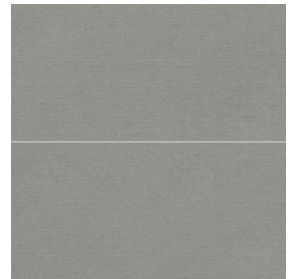
Ivory
100005407



Beige
100005408



Ecrú
100005409



Grey
100005410

24"x36" R11 Paver - Matte



Ivory
100005411



Beige
100005412



Ecrú
100005413



Grey
100005414

4"x4" Mosaic - Matte (12"x12" Sheet)



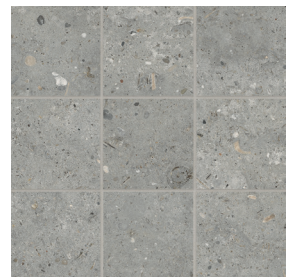
Ivory
100005972



Beige
100005973



Ecrú
100005974



Grey
100005975



Poetry Stone

Glazed Color Body Porcelain

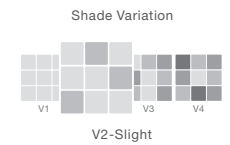
Photo Features 24"x48" Field Tile - Matte in Beige on Floor.

SIZING & PACKAGING

| Type | Shape | Beige Item Code | Ecrú Item Code | Grey Item Code | Ivory Item Code | Size | Description | Pcs / Ctn | Sf / Ctn |
|--------|-------|-----------------|----------------|----------------|-----------------|---------------|-------------------------|-----------|----------|
| Field | | 100005412 | 100005413 | 100005414 | 100005411 | 24"x36" | R11Paver - Matte | 1 | 5.81 |
| | | 100005404 | 100005405 | 100005406 | 100005403 | 24"x48" | Field Tile - Matte | 2 | 15.50 |
| Deco | | 100005408 | 100005409 | 100005410 | 100005407 | 24"x48" | Deco Field Tile - Satin | 2 | 15.50 |
| Trim | | 100005979 | 100005980 | 100005981 | 100005976 | 3"x24" | Bullnose - Matte | 10 | - |
| Mosaic | | 100005973 | 100005974 | 100005975 | 100005972 | 12"x12" Sheet | 4"x4" Mosaic - Matte | 5 | - |

ANSI TECHNICAL SPECIFICATIONS

| | DCOF Acutest | PEI Rating ASTM# C1027 | Frost Resistant ASTM# C1026 | Scratch Resistance MOHS | Breaking Strength ASTM# C648 | Water Absorption ASTM# C373 | Chemical Resistance ASTM# C650 |
|---------|--------------|------------------------|-----------------------------|-------------------------|------------------------------|-----------------------------|--------------------------------|
| Results | ≥0.42 | 5 | Unaffected | 8 | Pass (1,300 ISO) | ≤ 0.5% | Unaffected |

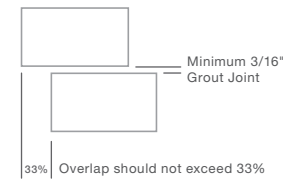


APPLICATIONS - NON-PAVERS

| | Floors | Walls | Countertops | Shower Floors | Shower Walls | Pools/Spas |
|-------------|--------|-------|-------------|---------------|--------------|------------|
| Residential | ● † | ■ | ■ | ● † | ■ | ■ |
| Commercial | ● † | ■ | ■ | ● † | ■ | ■ |

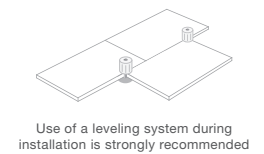
APPLICATIONS - PAVERS

| | Floors | Walls | Countertops | Shower Floors | Shower Walls | Pools/Spas |
|-------------|--------|-------|-------------|---------------|--------------|------------|
| Residential | ■ | ■ | ■ | ■ | ■ | ■ |
| Commercial | ■ | ■ | ■ | ■ | ■ | ■ |



LEGEND

- Product rated for Interior & Exterior use
- Product rated for Interior use only
- † May be suitable for Exterior Floors
- ∅ Applications & ANSI Technical Specifications do not apply
- * Special Order only



† The TCNA does not rate products for exterior floors. Project specifier must determine product suitability for exterior floor applications by evaluating specific project conditions, type of use, traffic, drainage, expected contaminants (such as water, oil, grease, etc.), wear, maintenance, and manufacturer's specifications and guidelines. Use caution--product may not be suitable for pool decks. Not suitable for ramps. No polished tiles; only textured surfaces may be suitable.

Merchandising materials and samples are for general reference only and representative of a product's potential characteristics. Tile is subject to variation in color/shade, size, texture, and finish. Field, mosaic and trim tile may not match exactly. Blend tiles from different boxes to achieve consistent shade distribution. Installer and end user must conduct a dry mock layout under proper lighting conditions to inspect the product. Installation constitutes acceptance of the product. Reference the TCNA, ANSI, Manufacturer's specifications, and Bedrosians Care & Maintenance Guide. Improper installation, application, use, care and maintenance voids warranty. We reserve the right to make product changes without notice. Please visit bedrosians.com for current product information.

