



Photo Features 2 1/2" x 10" Non-rectified Ceramic Wall Tile - Matte in Shoji-White.

Makoto Decorative (Glazed Ceramic)

2 1/2"x10" Non-rectified Ceramic Wall Tile - Matte



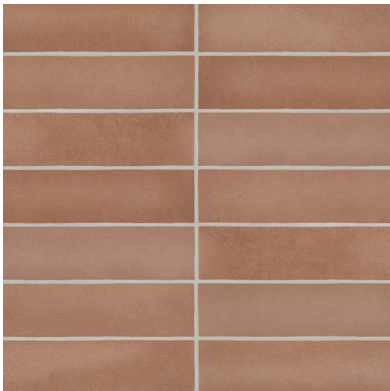
Shoji White - SHW
DECMAKSHW2510M



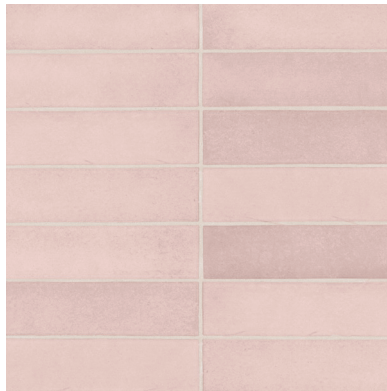
Tatami Beige - TAB
DECMAKTAB2510M



Kumo Grey - KUG
DECMAKKUG2510M



Umi Terracotta - UMT
DECMAKUMT2510M



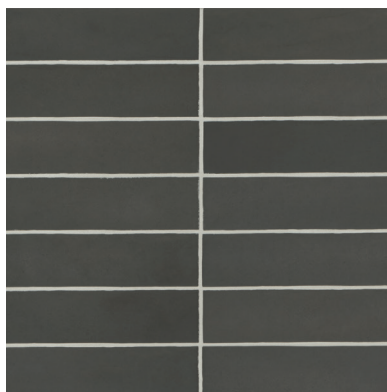
Momoiro Blush - MOB
DECMAKMOB2510M



Midori Green - MIG
DECMAKMIG2510M



Arashi Blue - ARB
DECMAKARB2510M



Kuroi Black - KUB
DECMAKKUB2510M

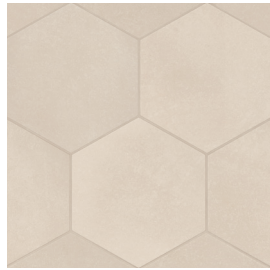


1/2"x8" Jolly Miter Edge Trim - Matte
DECMAK***JOLM
(Available in All Colors)

10"x11 1/2" Non-rectified Porcelain Hexagon Tile - Matte



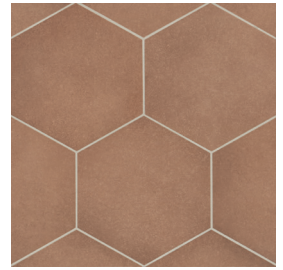
Shoji White - SHW
DECKMAKSHWHEX10M



Tatami Beige - TAB
DECKMAKTABHEX10M



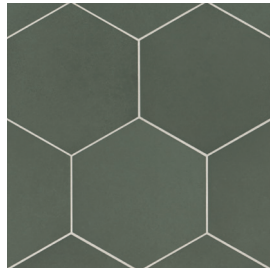
Kumo Grey - KUG
DECKMAKKUGHEX10M



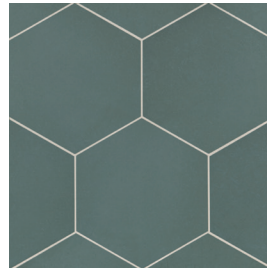
Umi Terracotta - UMT
DECKMAKUMTHEX10M



Momoiro Blush - MOB
DECKMAKMOBHEX10M



Midori Green - MIG
DECKMAKMIGHEX10M



Arashi Blue - ARB
DECKMAKARBHEX10M



Kuroi Black - KUB
DECKMAKKUBHEX10M

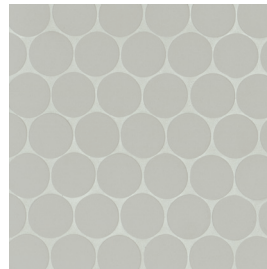
Porcelain Thru-Body 2" Round Mosaic - Matte (10"x10" Sheet)



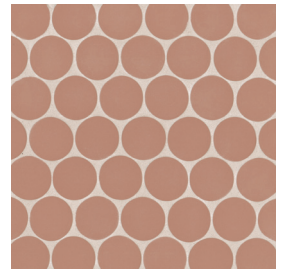
Shoji White - SHW
DECKMAKSHW2RMOM



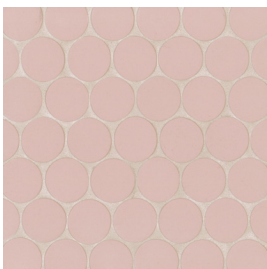
Tatami Beige - TAB
DECKMAKTAB2RMOM



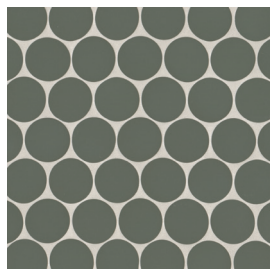
Kumo Grey - KUG
DECKMAKKUG2RMOM



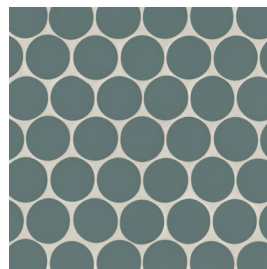
Umi Terracotta - UMT
DECKMAKUMT2RMOM



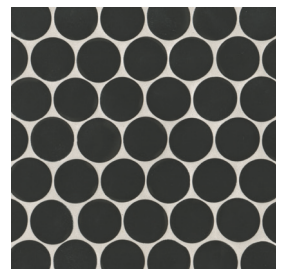
Momoiro Blush - MOB
DECKMAKMOB2RMOM



Midori Green - MIG
DECKMAKMIG2RMOM



Arashi Blue - ARB
DECKMAKARB2RMOM



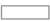



Kuroi Black - KUB
DECKMAKKUB2RMOM

Makoto

Decorative (Glazed Ceramic and Porcelain)

Photo Features 2 1/2"x10" Non-rectified Ceramic Wall Tile - Matte in Momoiro Blush.

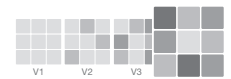
SIZING & PACKAGING

Type	Shape	Item Code	Size	Description	Pcs / Ctn	Sf / Ctn
Wall		DECKMAK...2510M	2 1/2"x10"	Non-rectified Ceramic Wall Tile - Matte	34	5.38
Field		DECKMAK...HEX10M	10"x11 1/2"	Non-rectified Porcelain Hexagon Tile - Matte	18	10.76
Trim		DECKMAK...JOLM	1/2"x8"	Jolly - Miter Edge Trim - Matte	60	-
Mosaic		DECKMAK...2RMOM	10"x10" Sheet	Thru-body Porcelain 2" Round Mosaic - Matte	5	3.42

ANSI TECHNICAL SPECIFICATIONS

	DCOF Acutest	Scratch Resistance MOHS	Breaking Strength ASTM# C648	Water Absorption ASTM# C373	Chemical Resistance ASTM# C650	Bond Strength A137.2-7.7	Thermal Shock ASTM# C484
Ceramic Wall Tile & Trim	N/A	3	ISO ≥ 600 N	> 1.0 (Ceramic)	Unaffected	N/A	Pass
Porcelain Hexagon Tile	≥ 0.42	7	ISO ≥ 600 N	< .5%	Unaffected	Pass	Pass
Porcelain Thru-body 2" Mosaic	≥ 0.42	7	ISO ≥ 600 N	< .5%	Unaffected	N/A	Pass

Shade Variation



V4-High (Wall, Hexagon and Trim)

Shade Variation



V2-Slight (2" Round Mosaic)

APPLICATIONS - Ceramic Wall Tile and Trim

	Floors	Walls	Countertops	Shower Floors	Shower Walls	Pools/Spas
Residential		●			●	
Commercial		●			●	

APPLICATIONS - Porcelain Hexagon Field Tile and Mosaic

	Floors	Walls	Countertops	Shower Floors	Shower Walls	Pools/Spas (Excludes Mosaics)
Residential	●	■	■	●	■	■
Commercial	●	■	■	●	■	■

LEGEND

- Product rated for Interior & Exterior use
- Product rated for Interior use only
- † May be suitable for Exterior Floors
- ⊘ Applications & ANSI Technical Specifications do not apply
- * Special Order only

If the product has a mesh-mounted back, it cannot be installed in submerged areas.

These tiles are handmade and subject to color variation. Mix randomly from different boxes to balance variation.

Wet the back of the tile prior to setting. Apply thinset to both the substrate and the back of the tile using a notched trowel.

For installation of all polished, polished glazed, lappato, and honed porcelain/ceramic tiles, use a grout release prior to grouting to prevent absorption of the grout into the tile's micropores. Use a grout color that matches the predominant color of the tile. Refer to grout manufacturer's specifications to ensure use of proper grout. Refer to tile manufacturer's specifications to determine if the polished or honed tile is appropriate for commercial applications. Tiles with a polished finish are not appropriate for wet or exterior floor applications. Do not use acidic cleaners.

Merchandising materials and samples are for general reference only and representative of a product's potential characteristics. Tile is subject to variation in color/shade, size, texture, and finish. Field, mosaic and trim tile may not match exactly. Blend tiles from different boxes to achieve consistent shade distribution. Installer and end user must conduct a dry mock layout under proper lighting conditions to inspect the product. Installation constitutes acceptance of the product. Reference the TCNA, ANSI, Manufacturer's specifications, and Bedrosians Care & Maintenance Guide. Improper installation, application, use, care and maintenance voids warranty. We reserve the right to make product changes without notice. Please visit bedrosians.com for current product information.



Non-Rectified

Unglazed-Thru Body Porcelain (2" Round Mosaic)

Glazed Porcelain (Hexagon)

Glazed Ceramic

Made in Spain

Made in Italy (Mosaic)