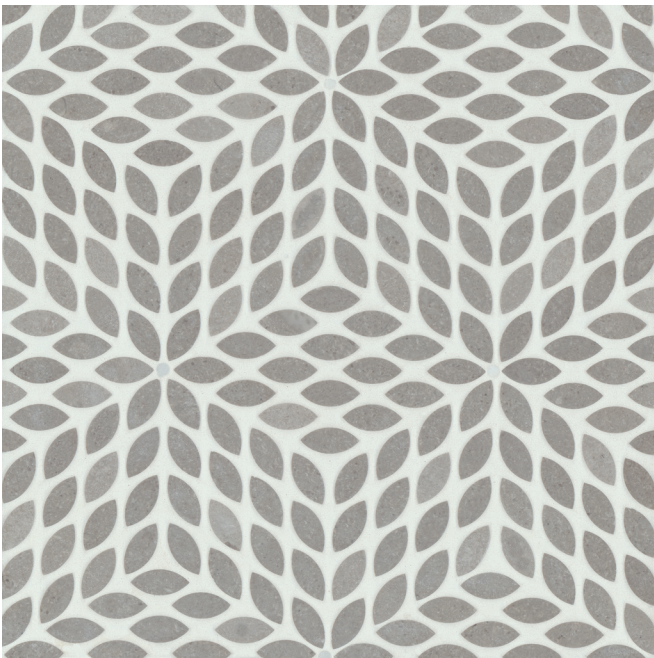




Myra Beige/Basalt  
100001715  
Mosaic Blend - Honed  
(15 3/4"x14" Sheet)



White Carrara/Bardiglio  
100001712  
Mosaic Blend - Honed  
(15 3/4"x14" Sheet)



Cinder Grey/Calcatta Losanna  
100001714  
Mosaic Blend - Honed  
(15 3/4"x14" Sheet)



Nero Marquina/Calcatta Losanna  
100001713  
Mosaic Blend - Honed  
(15 3/4"x14" Sheet)



# Celeste

## Decorative (Stone Blend Mosaics)

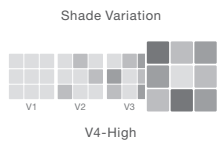
Photo Features Mosaic Blend - Honed in Myra Beige/Basalt.

### SIZING & PACKAGING

Type	Shape	Item Code	Size	Description	Pcs / Ctn	Sf / Ctn
Mosaic		100001714	15 3/4"x14" Sheet	Mosaic Blend - Honed in Cinder Grey/Calcatta Losanna	5	7.85
		100001715	15 3/4"x14" Sheet	Mosaic Blend - Honed in Myra Beige/Basalt	5	7.85
		100001713	15 3/4"x14" Sheet	Mosaic Blend - Honed in Nero Marquina/Calcatta Losanna	5	7.85
		100001712	15 3/4"x14" Sheet	Mosaic Blend - Honed in White Carrara/Bardiglio	5	7.85

### ANSI TECHNICAL SPECIFICATIONS

	Abrasion Resistance	Water Absorption	Average Bulk Specific Gravity	Compressive Strength Perpendicular (Dry)	Flexural Strength Perpendicular (Dry)	Modulus Rupture Perpendicular (Dry)
Results	11.98 lw	0.16	167.28 lbs/ft <sup>3</sup> 2,680.6 kg/m <sup>3</sup>	13,000 psi	1,340 psi	1,500 psi



### APPLICATIONS

	Floors	Walls	Countertops	Shower Floors	Shower Walls	Pools/Spas
Residential	● †	◻	◻	● †	◻	
Commercial	● †	◻	◻	● †	◻	

### LEGEND

- ◻ Product rated for Interior & Exterior use
- Product rated for Interior use only
- † May be suitable for Exterior Floors
- ∅ Applications & ANSI Technical Specifications do not apply
- \* Special Order only

Please be aware that white stones installed on shower floors may experience oxidization and rusting.

Do not use chlorine, acids, or other harsh chemicals to clean. All spills must be cleaned immediately to prevent staining.

All natural stone products must be sealed prior to grouting. Due to the size of the grout joint, a premium grout must be used. Grout joints should be packed full and free of voids and pits. Please follow all grout manufacturer's instructions.

Merchandising materials and samples are for general reference only and representative of a product's potential characteristics. Natural stone has inherent variation in color/shade, size, texture, finish, veining, grain, movement and pitting. Blend tiles from different boxes to achieve consistent shade distribution. Installer and end user must conduct a dry mock layout under proper lighting conditions to inspect the product. Installation constitutes product acceptance. Ensure proper installation, application, use, care and maintenance. Natural stone must be sealed prior to installation. Do not use aerosol catalyst adhesives. Only use pH neutral cleaners. Natural stone may experience changes in color and finish if installed in an exterior application. There is no warranty for natural stone. Reference the TCNA Handbook and ANSI for installation guidance. Please visit [bedrosians.com](http://bedrosians.com) for current product information. We reserve the right to make product changes at any time without notice.

