

# SHARPEWOOD LEVER WITH CONTEMPORARY SQUARE ROSE- PRIVACY

## RESERVE PORTFOLIO

Model Number:  
PV.SHA.R.CSR.150

SEE BELOW FOR ADDITIONAL FUNCTIONS

## Key Features

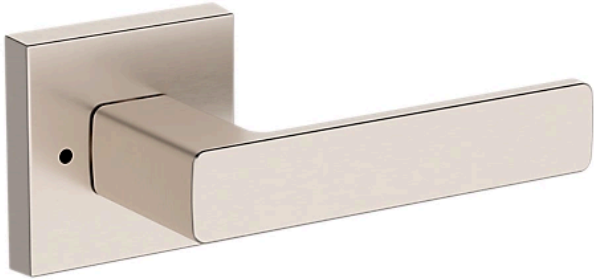
- Crafted from solid brass and built to last, Reserve is made for real life. With premium finishes, this is
- ✓

hardware that holds up and stands out. High performance meets high style, made to live as boldly as you do.
- Reserve by Baldwin is made to fit. It works with
- ✓

standard door preps and includes an adjustable latch for either a 2-3/8" or 2-3/4" backset. Designed to fit door thicknesses from 1-3/8" to 1-3/4" with ease.
- The 150 Satin Nickel finish is soft, sleek, and effortlessly
- ✓


versatile—made to pair seamlessly with Baldwin's 056 Lifetime Satin Nickel finish.
- Confident and clean-lined. Sharpe delivers bold
- ✓

simplicity with its strong rectangular form and softened edges, bringing a modern edge that feels fresh and effortless.




## FINISHES OPTIONS

- 

Satin Nickel - 150, US15
- 

Lifetime (PVD) Polished Nickel - 055
- 

Polished Chrome - 260
- 

Lifetime (PVD) Satin Brass - 044
- 

Satin Black - 190
- 

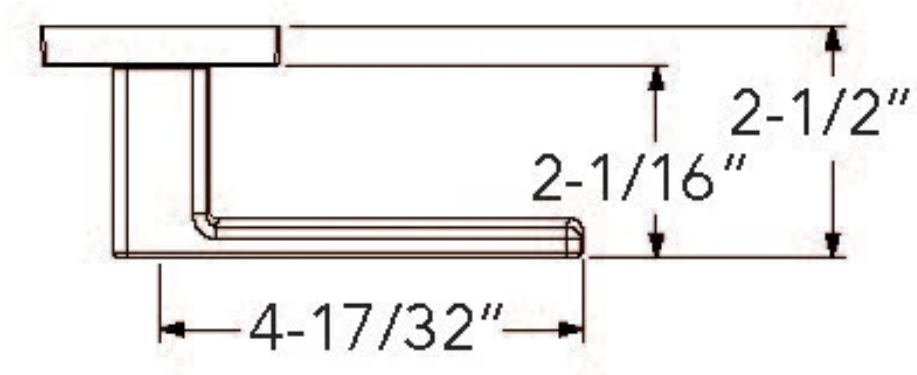
Venetian Bronze - 112
- 

Non-lacquered Brass - 031

all measurements in inches

## SPECIFICATIONS

LOCK TYPE	Tubular
STYLE	Contemporary
LOCK FUNCTION	Privacy
BACKSET SIZE	Adjustable
MAXIMUM DOOR THICKNESS	2
MINIMUM DOOR THICKNESS	1-3/8
PARTIAL MODEL	PV.SHA.R.CSR.150
LEVER HANDING	Reversible
LEVER ROSE SHAPE	Square
INTERIOR LOCKING TYPE	Push Button
CROSS BORE	2-1/8"



18761 Da Vinci • Lake Forest • California • 82810 • 1.800.566.1986 • BaldwinHardware.com • 613883S