

# SHARPEWOOD LEVER WITH CONTEMPORARY 5" ROSE- PASSAGE

NEW

RESERVE PORTFOLIO

Model Number:  
PS.SHA.R.CFR.260

SEE BELOW FOR ADDITIONAL FUNCTIONS

## Key Features

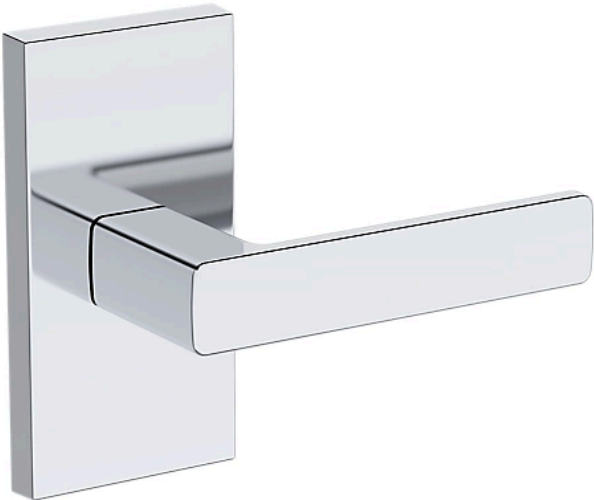
- Crafted from solid brass and built to last, Reserve is made for real life. With premium finishes, this is
- ✓

hardware that holds up and stands out. High performance meets high style, made to live as boldly as you do.
- Reserve by Baldwin is made to fit. It works with
- ✓

standard door preps and includes an adjustable latch for either a 2-3/8" or 2-3/4" backset. Designed to fit door thicknesses from 1-3/8" to 1-3/4" with ease.
- The 260 Polished Chrome finish is sleek, shiny, and
- ✓

seriously cool, crafted for high shine and built to hold its edge.
- Confident and clean-lined. Sharpe delivers bold
- ✓

simplicity with its strong rectangular form and softened edges, bringing a modern edge that feels fresh and effortless.



## FINISHES OPTIONS

- Satin Nickel - 150, US15
- Lifetime (PVD) Polished Nickel - 055
- Polished Chrome - 260**
- Lifetime (PVD) Satin Brass - 044
- Satin Black - 190
- Venetian Bronze - 112
- Non-lacquered Brass - 031

all measurements in inches

## SPECIFICATIONS

LOCK TYPE	Tubular
STYLE	Contemporary
LOCK FUNCTION	Passage
BACKSET SIZE	Adjustable
MAXIMUM DOOR THICKNESS	2
MINIMUM DOOR THICKNESS	1-3/8
PARTIAL MODEL	PS.SHA.R.CFR.260
LEVER HANDING	Reversible
LEVER ROSE SHAPE	Rectangular
CROSS BORE	2-1/8"

