

## SUGGESTED TOOLS AND MATERIALS / OUTILS ET MATÉRIEAUX PROPOSÉS

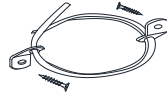


Screwdriver / Tournevis



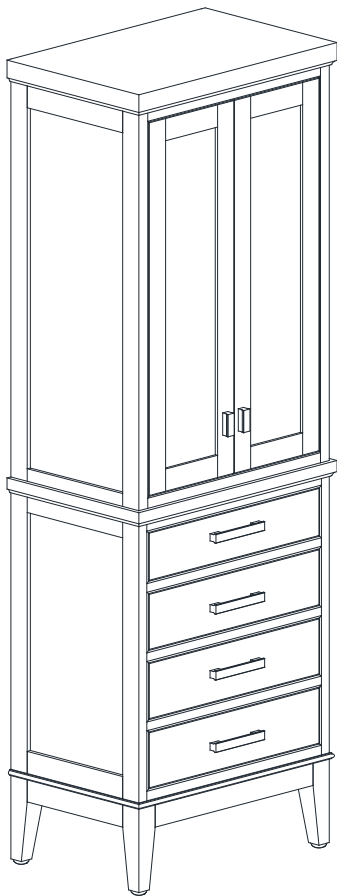
Tape Measure / Mètre à ruban

## PARTS / HARDWARE INCLUDED



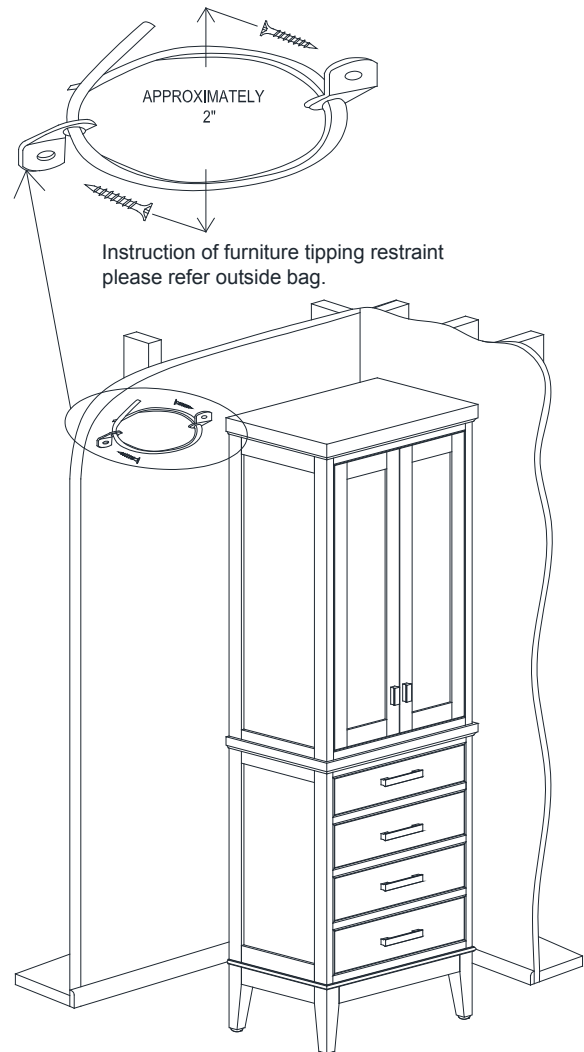
## INSTALLATION INSTRUCTIONS / Les instructions d'installation

1



Remove Linen Tower from box.  
*Retirer la tour de lin de la boîte*

2



Carefully place Linen Tower against wall.  
*Placez soigneusement la tour de lin contre le mur.*