

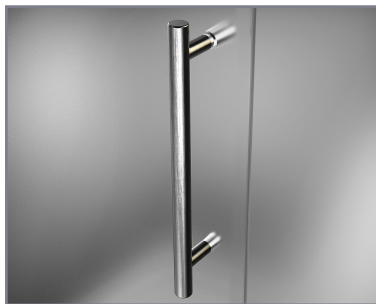
# Aston Bromley SEN967-6733



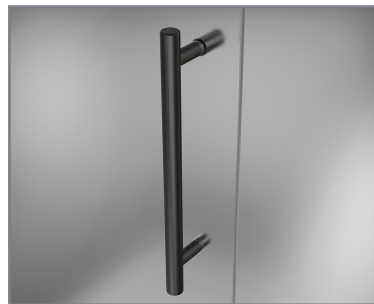
| MODEL            | WALL OPENING (A) | DOOR PANEL (B) | FIXED PANEL (C) | RETURN PANEL (D) | HEIGHT (E) | DOOR WALK THROUGH (F) |
|------------------|------------------|----------------|-----------------|------------------|------------|-----------------------|
| SEN967-673330-10 | 66 1/4"-67 1/4"  | 32 5/8"        | 33 5/8"         | 30"-30 3/8"      | 72"        | 30 5/8"-31 5/8"       |
| SEN967-673332-10 | 66 1/4"-67 1/4"  | 32 5/8"        | 33 5/8"         | 32"-32 3/8"      | 72"        | 30 5/8"-31 5/8"       |
| SEN967-673334-10 | 66 1/4"-67 1/4"  | 32 5/8"        | 33 5/8"         | 34"-34 3/8"      | 72"        | 30 5/8"-31 5/8"       |
| SEN967-673336-10 | 66 1/4"-67 1/4"  | 32 5/8"        | 33 5/8"         | 36"-36 3/8"      | 72"        | 30 5/8"-31 5/8"       |
| SEN967-673338-10 | 66 1/4"-67 1/4"  | 32 5/8"        | 33 5/8"         | 38"-38 3/8"      | 72"        | 30 5/8"-31 5/8"       |



POLISHED CHROME



STAINLESS STEEL



OIL RUBBED BRONZE



CLEAR GLASS



**CH** CHROME HARDWARE

**SS** STAINLESS STEEL HARDWARE

**ORB** OIL RUBBED BRONZE HARDWARE



REVERSIBLE DOOR

ASTON  
**STARCAST**  
FROM **EnduroShield**

**ASTON**  
ESCAPE THE EVERYDAY