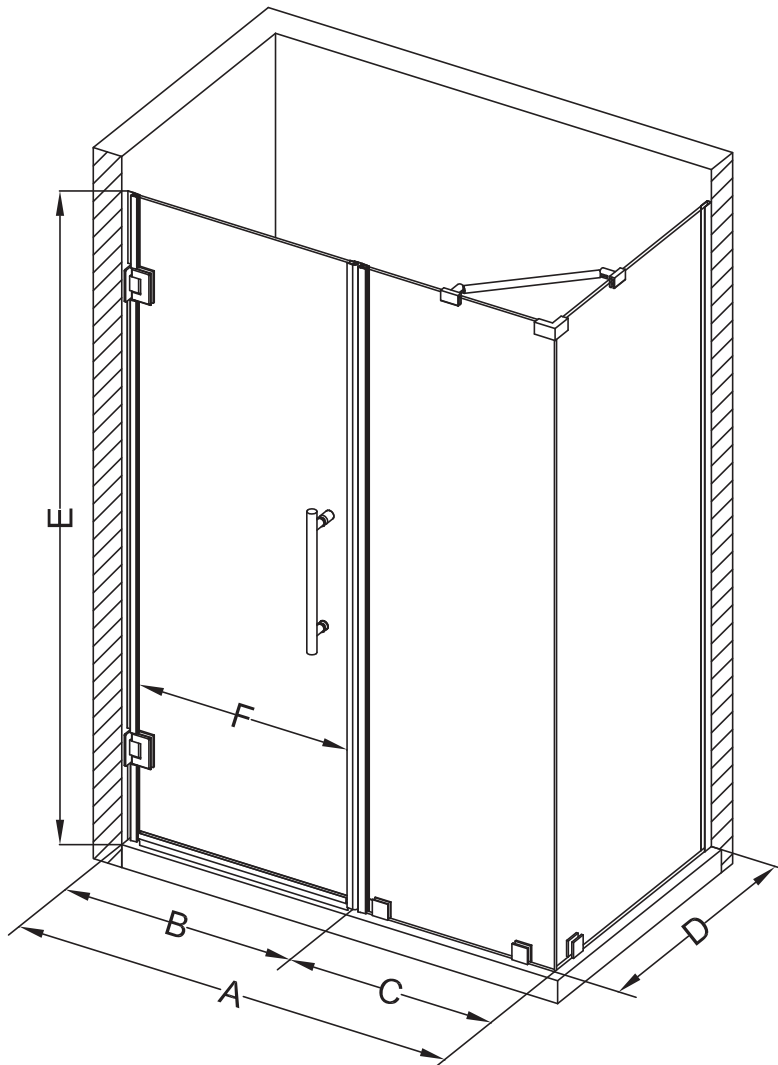


Aston Bromley SEN967-6038



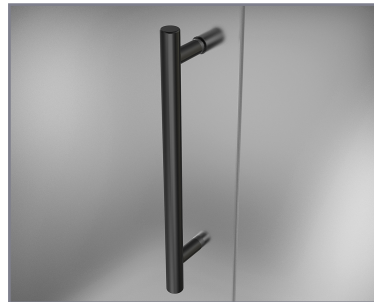
MODEL	WALL OPENING (A)	DOOR PANEL (B)	FIXED PANEL (C)	RETURN PANEL (D)	HEIGHT (E)	DOOR WALK THROUGH (F)
SEN967-603830-10	59 1/4"-60 1/4"	37 5/8"	21 5/8"	30"-30 3/8"	72"	35 5/8"-36 5/8"
SEN967-603832-10	59 1/4"-60 1/4"	37 5/8"	21 5/8"	32"-32 3/8"	72"	35 5/8"-36 5/8"
SEN967-603834-10	59 1/4"-60 1/4"	37 5/8"	21 5/8"	34"-34 3/8"	72"	35 5/8"-36 5/8"
SEN967-603836-10	59 1/4"-60 1/4"	37 5/8"	21 5/8"	36"-36 3/8"	72"	35 5/8"-36 5/8"
SEN967-603838-10	59 1/4"-60 1/4"	37 5/8"	21 5/8"	38"-38 3/8"	72"	35 5/8"-36 5/8"



POLISHED CHROME



STAINLESS STEEL



OIL RUBBED BRONZE



CLEAR GLASS



CH CHROME HARDWARE

SS STAINLESS STEEL HARDWARE

ORB OIL RUBBED BRONZE HARDWARE



REVERSIBLE DOOR

ASTON
STARCAST
FROM **EnduroShield**

ASTON
ESCAPE THE EVERYDAY