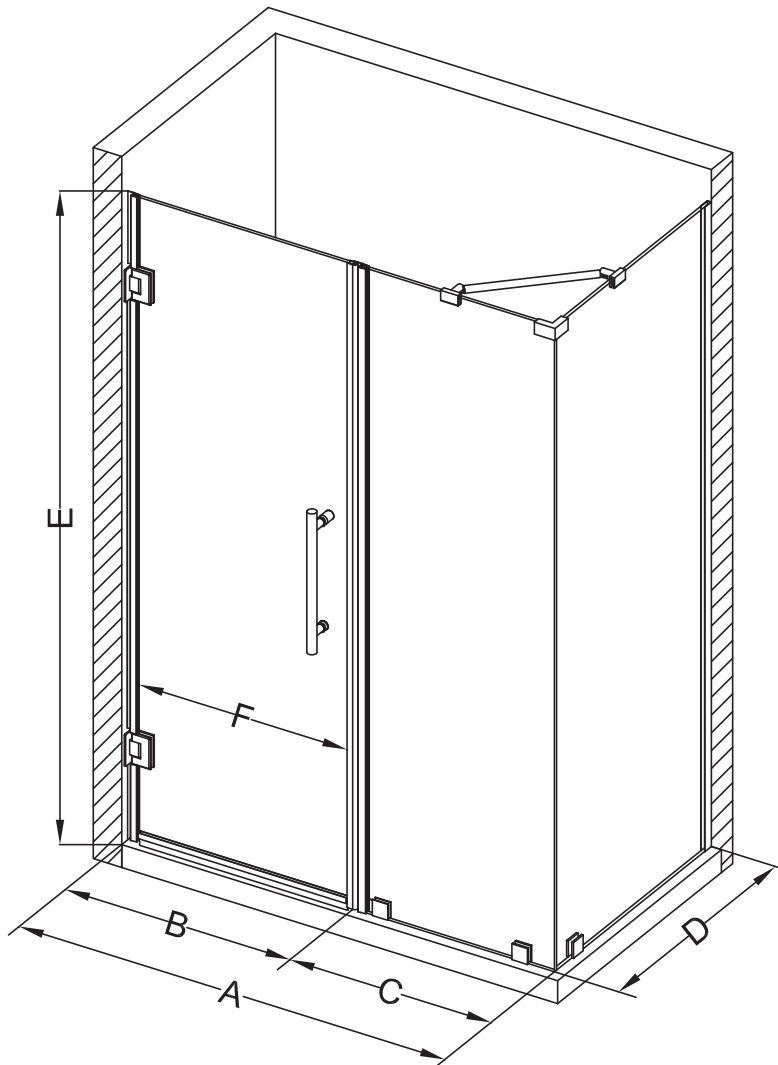
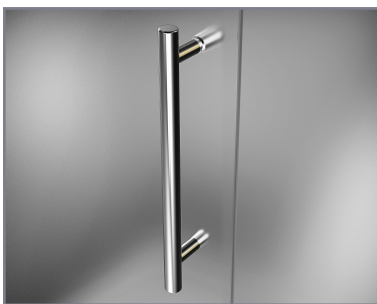


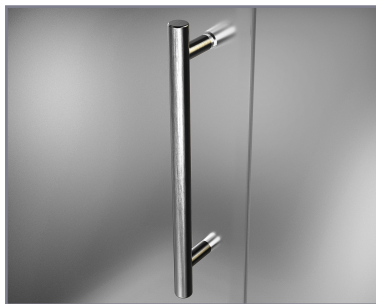
Aston Bromley SEN967-5525



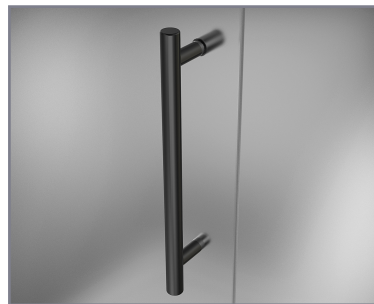
MODEL	WALL OPENING (A)	DOOR PANEL (B)	FIXED PANEL (C)	RETURN PANEL (D)	HEIGHT (E)	DOOR WALK THROUGH (F)
SEN967-552530-10	54 1/4" - 55 1/4"	24 5/8"	29 5/8"	30" - 30 3/8"	72"	22 5/8" - 23 5/8"
SEN967-552532-10	54 1/4" - 55 1/4"	24 5/8"	29 5/8"	32" - 32 3/8"	72"	22 5/8" - 23 5/8"
SEN967-552534-10	54 1/4" - 55 1/4"	24 5/8"	29 5/8"	34" - 34 3/8"	72"	22 5/8" - 23 5/8"
SEN967-552536-10	54 1/4" - 55 1/4"	24 5/8"	29 5/8"	36" - 36 3/8"	72"	22 5/8" - 23 5/8"
SEN967-552538-10	54 1/4" - 55 1/4"	24 5/8"	29 5/8"	38" - 38 3/8"	72"	22 5/8" - 23 5/8"



POLISHED CHROME



STAINLESS STEEL



OIL RUBBED BRONZE



CLEAR GLASS



CH

CHROME
HARDWARE

SS

STAINLESS STEEL
HARDWARE

ORB

OIL RUBBED BRONZE
HARDWARE



REVERSIBLE
DOOR

ASTON
STARCAST
FROM
EnduroShield

ASTON
ESCAPE THE EVERYDAY