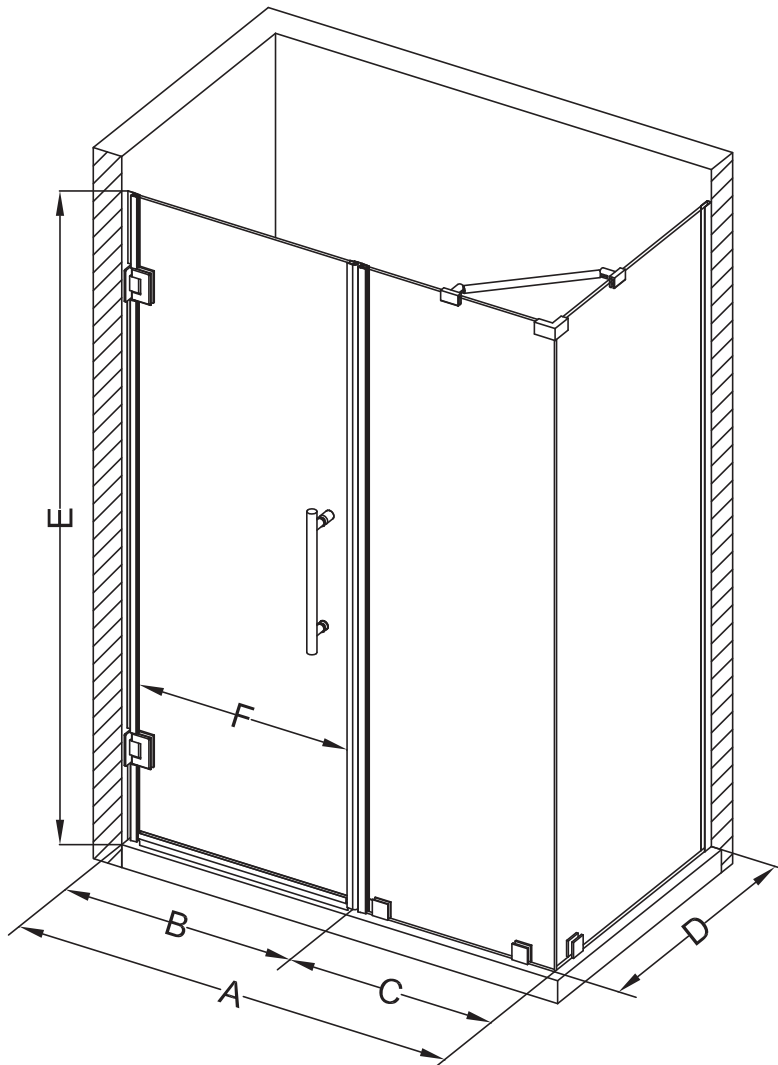


Aston Bromley SEN967-5028



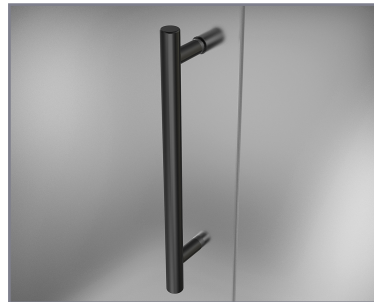
MODEL	WALL OPENING (A)	DOOR PANEL (B)	FIXED PANEL (C)	RETURN PANEL (D)	HEIGHT (E)	DOOR WALK THROUGH (F)
SEN967-502830-10	49 1/4"-50 1/4"	27 5/8"	21 5/8"	30"-30 3/8"	72"	25 5/8"-26 5/8"
SEN967-502832-10	49 1/4"-50 1/4"	27 5/8"	21 5/8"	32"-32 3/8"	72"	25 5/8"-26 5/8"
SEN967-502834-10	49 1/4"-50 1/4"	27 5/8"	21 5/8"	34"-34 3/8"	72"	25 5/8"-26 5/8"
SEN967-502836-10	49 1/4"-50 1/4"	27 5/8"	21 5/8"	36"-36 3/8"	72"	25 5/8"-26 5/8"
SEN967-502838-10	49 1/4"-50 1/4"	27 5/8"	21 5/8"	38"-38 3/8"	72"	25 5/8"-26 5/8"



POLISHED CHROME



STAINLESS STEEL



OIL RUBBED BRONZE



CLEAR GLASS



CH CHROME HARDWARE

SS STAINLESS STEEL HARDWARE

ORB OIL RUBBED BRONZE HARDWARE



REVERSIBLE DOOR

ASTON
STARCAST
FROM EnduroShield

ASTON
ESCAPE THE EVERYDAY