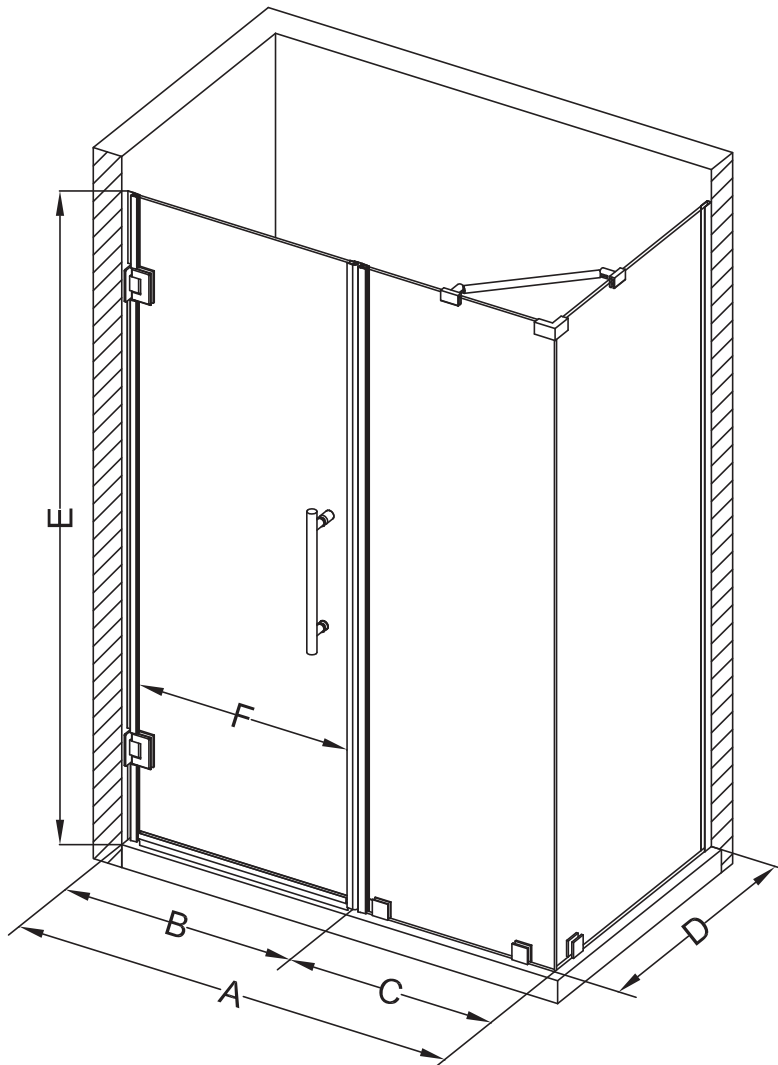


Aston Bromley SEN967-4523



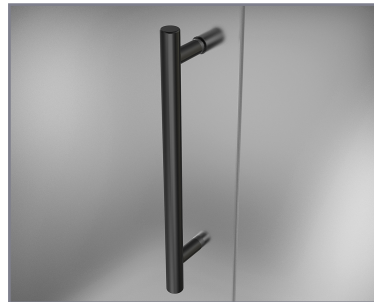
MODEL	WALL OPENING (A)	DOOR PANEL (B)	FIXED PANEL (C)	RETURN PANEL (D)	HEIGHT (E)	DOOR WALK THROUGH (F)
SEN967-452330-10	44 1/4"-45 1/4"	22 5/8"	21 5/8"	30"-30 3/8"	72"	20 5/8"-21 5/8"
SEN967-452332-10	44 1/4"-45 1/4"	22 5/8"	21 5/8"	32"-32 3/8"	72"	20 5/8"-21 5/8"
SEN967-452334-10	44 1/4"-45 1/4"	22 5/8"	21 5/8"	34"-34 3/8"	72"	20 5/8"-21 5/8"
SEN967-452336-10	44 1/4"-45 1/4"	22 5/8"	21 5/8"	36"-36 3/8"	72"	20 5/8"-21 5/8"
SEN967-452338-10	44 1/4"-45 1/4"	22 5/8"	21 5/8"	38"-38 3/8"	72"	20 5/8"-21 5/8"



POLISHED CHROME



STAINLESS STEEL



OIL RUBBED BRONZE



CLEAR GLASS



CH CHROME HARDWARE

SS STAINLESS STEEL HARDWARE

ORB OIL RUBBED BRONZE HARDWARE



REVERSIBLE DOOR

ASTON
STARCAST
FROM **EnduroShield**

ASTON
ESCAPE THE EVERYDAY