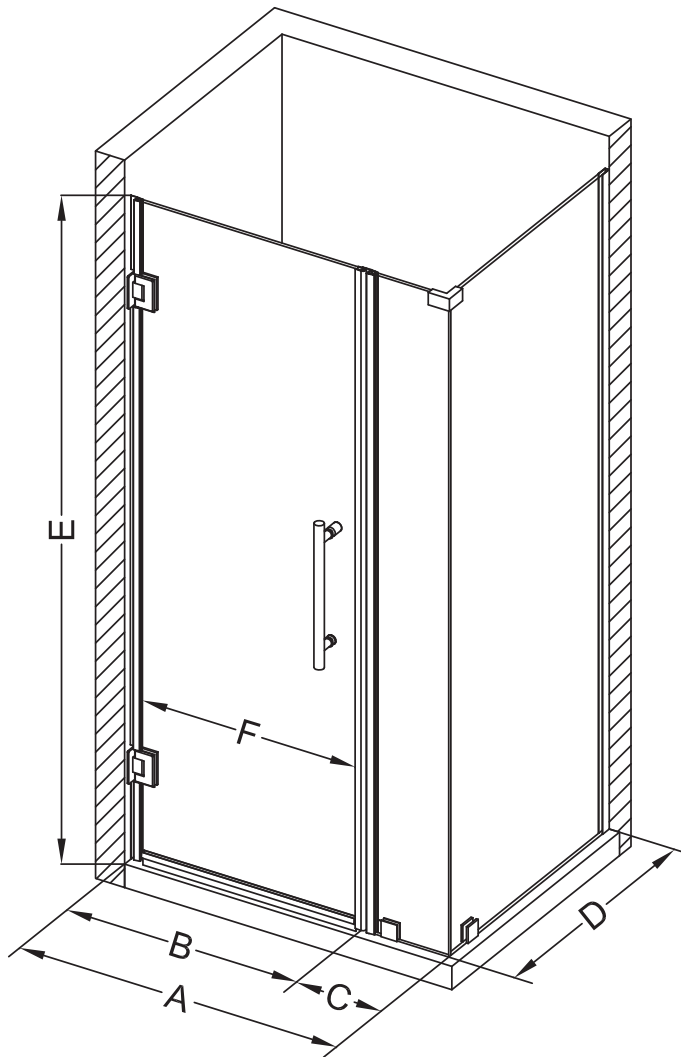
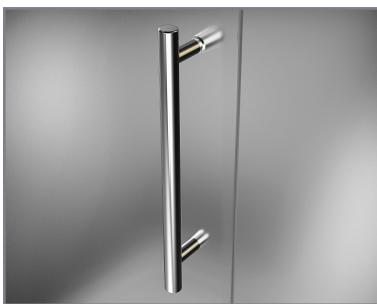


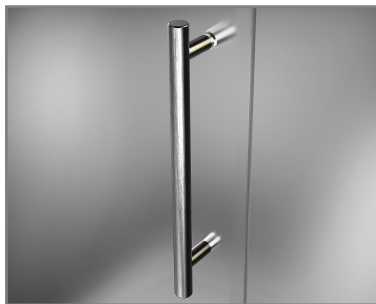
Aston Bromley SEN967-3824



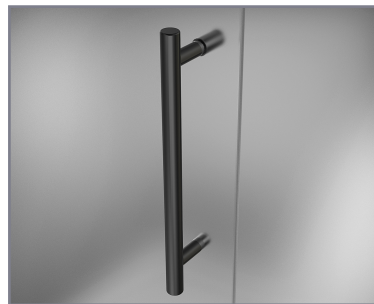
MODEL	WALL OPENING (A)	DOOR PANEL (B)	FIXED PANEL (C)	RETURN PANEL (D)	HEIGHT (E)	DOOR WALK THROUGH (F)
SEN967-382430-10	37 1/4"-38 1/4"	23 5/8"	13 5/8"	30"-30 3/8"	72"	21 5/8"-22 5/8"
SEN967-382432-10	37 1/4"-38 1/4"	23 5/8"	13 5/8"	32"-32 3/8"	72"	21 5/8"-22 5/8"
SEN967-382434-10	37 1/4"-38 1/4"	23 5/8"	13 5/8"	34"-34 3/8"	72"	21 5/8"-22 5/8"
SEN967-382436-10	37 1/4"-38 1/4"	23 5/8"	13 5/8"	36"-36 3/8"	72"	21 5/8"-22 5/8"
SEN967-382438-10	37 1/4"-38 1/4"	23 5/8"	13 5/8"	38"-38 3/8"	72"	21 5/8"-22 5/8"



POLISHED CHROME



STAINLESS STEEL



OIL RUBBED BRONZE



CLEAR GLASS



CH CHROME HARDWARE

SS STAINLESS STEEL HARDWARE

ORB OIL RUBBED BRONZE HARDWARE



REVERSIBLE DOOR

ASTON
STARCAST
FROM **EnduroShield**

ASTON
ESCAPE THE EVERYDAY