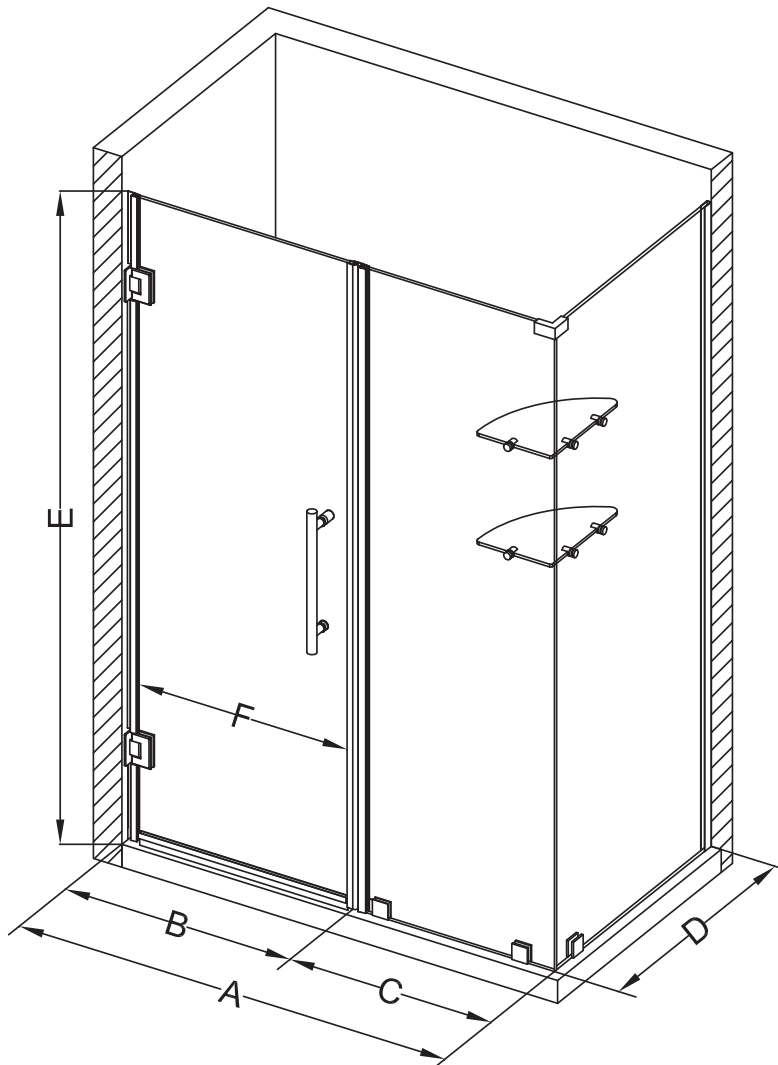
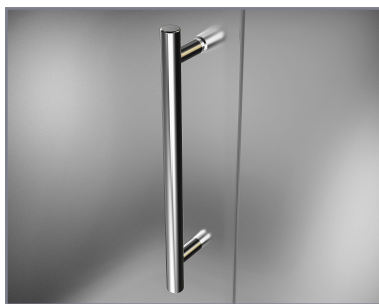


# Aston Bromley GS SEN962-6733

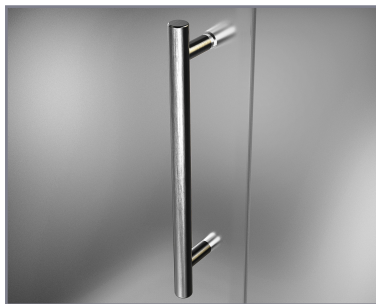
**ASTON**  
ESCAPE THE EVERYDAY



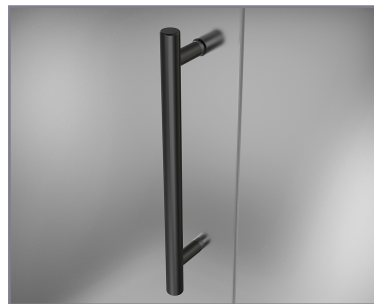
MODEL	WALL OPENING (A)	DOOR PANEL (B)	FIXED PANEL (C)	RETURN PANEL (D)	HEIGHT (E)	DOOR WALK THROUGH (F)
SEN962-673330-10	66 1/4" - 67 1/4"	32 5/8"	33 5/8"	30" - 30 3/8"	72"	30 5/8" - 31 5/8"
SEN962-673332-10	66 1/4" - 67 1/4"	32 5/8"	33 5/8"	32" - 32 3/8"	72"	30 5/8" - 31 5/8"
SEN962-673334-10	66 1/4" - 67 1/4"	32 5/8"	33 5/8"	34" - 34 3/8"	72"	30 5/8" - 31 5/8"
SEN962-673336-10	66 1/4" - 67 1/4"	32 5/8"	33 5/8"	36" - 36 3/8"	72"	30 5/8" - 31 5/8"
SEN962-673338-10	66 1/4" - 67 1/4"	32 5/8"	33 5/8"	38" - 38 3/8"	72"	30 5/8" - 31 5/8"



POLISHED CHROME



STAINLESS STEEL



OIL RUBBED BRONZE



CLEAR GLASS

FRAMELESS

**CH** CHROME  
HARDWARE

**SS** STAINLESS STEEL  
HARDWARE

**ORB** OIL RUBBED BRONZE  
HARDWARE



REVERSIBLE  
DOOR

**ASTON**  
**STARCAST**  
FROM  
**EnduroShield**

**ASTON**  
ESCAPE THE EVERYDAY