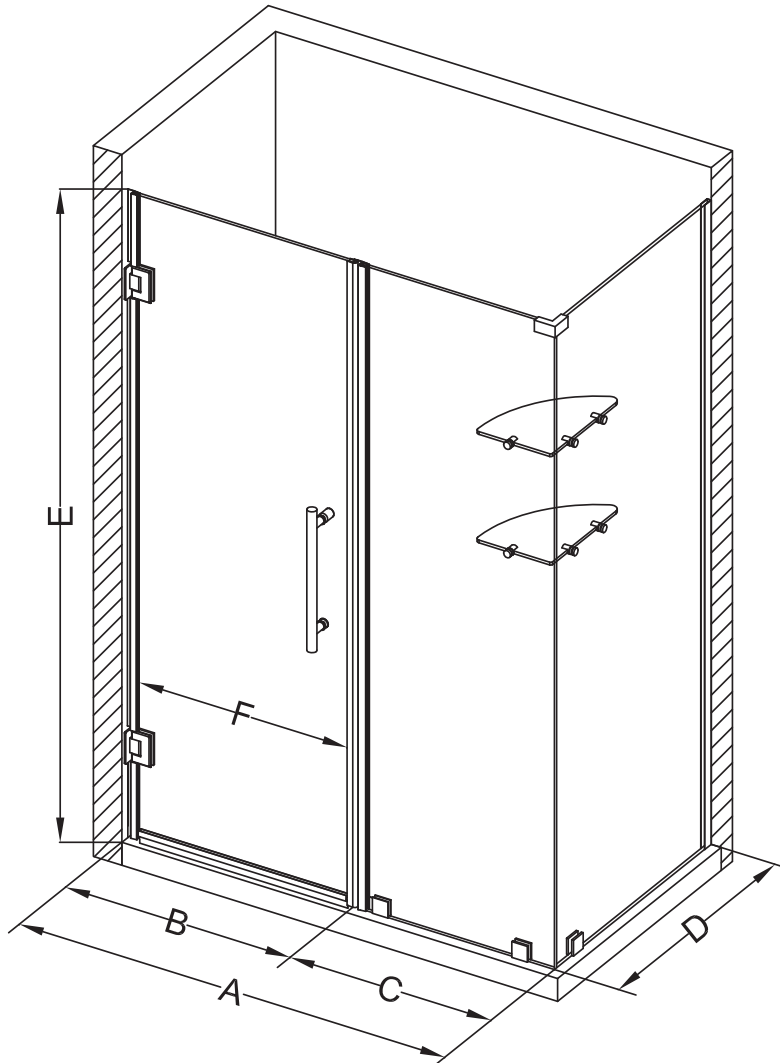


# Aston Bromley GS SEN962-6026



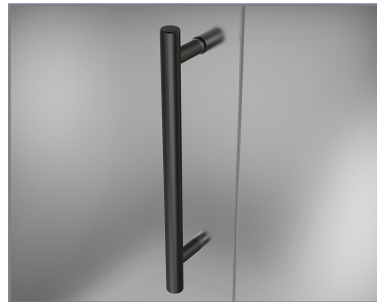
MODEL	WALL OPENING (A)	DOOR PANEL (B)	FIXED PANEL (C)	RETURN PANEL (D)	HEIGHT (E)	DOOR WALK THROUGH (F)
SEN962-602630-10	59 1/4"-60 1/4"	25 5/8"	33 5/8"	30"-30 3/8"	72"	23 5/8"-24 5/8"
SEN962-602632-10	59 1/4"-60 1/4"	25 5/8"	33 5/8"	32"-32 3/8"	72"	23 5/8"-24 5/8"
SEN962-602634-10	59 1/4"-60 1/4"	25 5/8"	33 5/8"	34"-34 3/8"	72"	23 5/8"-24 5/8"
SEN962-602636-10	59 1/4"-60 1/4"	25 5/8"	33 5/8"	36"-36 3/8"	72"	23 5/8"-24 5/8"
SEN962-602638-10	59 1/4"-60 1/4"	25 5/8"	33 5/8"	38"-38 3/8"	72"	23 5/8"-24 5/8"



POLISHED CHROME



STAINLESS STEEL



OIL RUBBED BRONZE



CLEAR GLASS



**CH** CHROME HARDWARE

**SS** STAINLESS STEEL HARDWARE

**ORB** OIL RUBBED BRONZE HARDWARE



ASTON  
**STARCAST**  
FROM  
EnduroShield

**ASTON**  
ESCAPE THE EVERYDAY