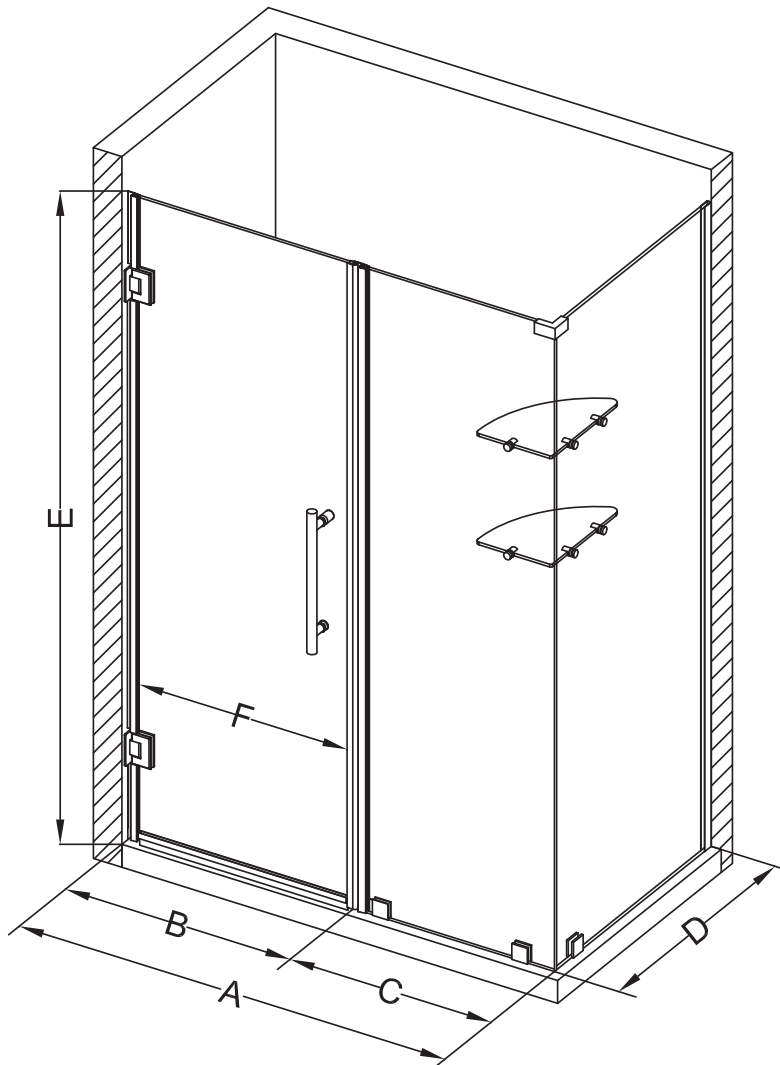


# Aston Bromley GS SEN962-5929



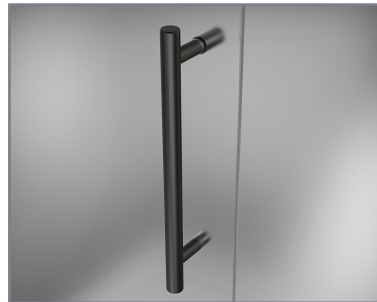
MODEL	WALL OPENING (A)	DOOR PANEL (B)	FIXED PANEL (C)	RETURN PANEL (D)	HEIGHT (E)	DOOR WALK THROUGH (F)
SEN962-592930-10	58 1/4" - 59 1/4"	28 5/8"	29 5/8"	30" - 30 3/8"	72"	26 5/8" - 27 5/8"
SEN962-592932-10	58 1/4" - 59 1/4"	28 5/8"	29 5/8"	32" - 32 3/8"	72"	26 5/8" - 27 5/8"
SEN962-592934-10	58 1/4" - 59 1/4"	28 5/8"	29 5/8"	34" - 34 3/8"	72"	26 5/8" - 27 5/8"
SEN962-592936-10	58 1/4" - 59 1/4"	28 5/8"	29 5/8"	36" - 36 3/8"	72"	26 5/8" - 27 5/8"
SEN962-592938-10	58 1/4" - 59 1/4"	28 5/8"	29 5/8"	38" - 38 3/8"	72"	26 5/8" - 27 5/8"



POLISHED CHROME



STAINLESS STEEL



OIL RUBBED BRONZE



CLEAR GLASS



**CH** CHROME HARDWARE

**SS** STAINLESS STEEL HARDWARE

**ORB** OIL RUBBED BRONZE HARDWARE



REVERSIBLE DOOR

ASTON  
**STARCAST**  
FROM  
EnduroShield

**ASTON**  
ESCAPE THE EVERYDAY