

# Aston Bromley GS SEN962-5533



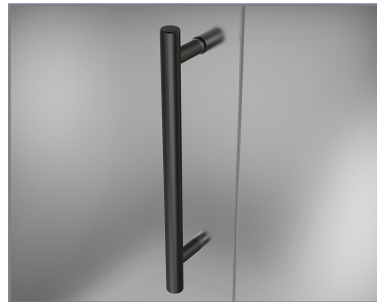
MODEL	WALL OPENING (A)	DOOR PANEL (B)	FIXED PANEL (C)	RETURN PANEL (D)	HEIGHT (E)	DOOR WALK THROUGH (F)
SEN962-553330-10	54 1/4" - 55 1/4"	32 5/8"	21 5/8"	30" - 30 3/8"	72"	30 5/8" - 31 5/8"
SEN962-553332-10	54 1/4" - 55 1/4"	32 5/8"	21 5/8"	32" - 32 3/8"	72"	30 5/8" - 31 5/8"
SEN962-553334-10	54 1/4" - 55 1/4"	32 5/8"	21 5/8"	34" - 34 3/8"	72"	30 5/8" - 31 5/8"
SEN962-553336-10	54 1/4" - 55 1/4"	32 5/8"	21 5/8"	36" - 36 3/8"	72"	30 5/8" - 31 5/8"
SEN962-553338-10	54 1/4" - 55 1/4"	32 5/8"	21 5/8"	38" - 38 3/8"	72"	30 5/8" - 31 5/8"



POLISHED CHROME



STAINLESS STEEL



OIL RUBBED BRONZE



CLEAR GLASS



**CH** CHROME HARDWARE

**SS** STAINLESS STEEL HARDWARE

**ORB** OIL RUBBED BRONZE HARDWARE



ASTON  
**STARCAST**  
FROM  
EnduroShield

**ASTON**  
ESCAPE THE EVERYDAY