

ASSEMBLY INSTRUCTIONS

ITEM #49175| Aaron Sconce

ITEM DESCRIPTION

MATERIAL TYPE:STEEL.MARBLE.LEATHER FINISH :HERITAGE BRASS/ORB.BLK MARBLE.GREY
 SOCKET TYPE: E26 CERAMIC SOCKET QTY:1 VOLTAGE:110V-120V
 BULB TYPE: TYPE A BULB WATTAGE: 60W/or CFL 16W/or LED 13W
 ITEM NET WEIGHT: TOP COAT/SEALANT:



UL COMPLIANT

INSTALLATION ENVIRONMENT:SUITABLE FOR DAMP LOCATIONS

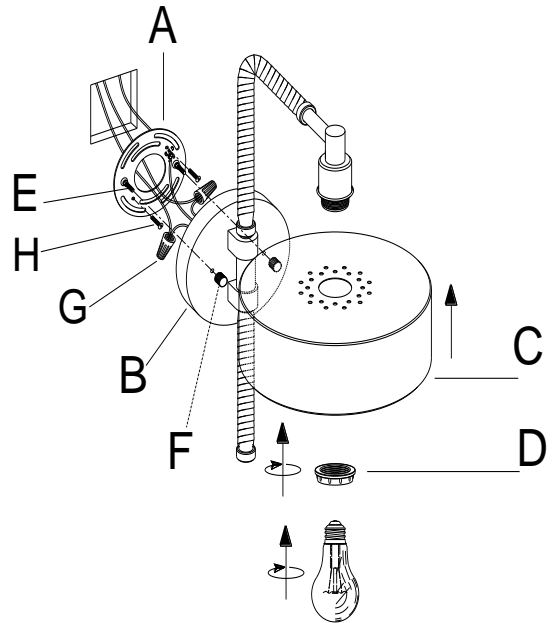
NOTE:

- *YOUR PRODUCT(S) MAY BE PACKED IN MORE THAN ONE CARTON
- *THIS ITEM MAY REQUIRE PERIODIC TIGHTENING

PARTS

A	MOUNTING PLATE	1 PC
B	BACK PLATE	1 PC
C	SHADE	1 PC
D	SOCKET RING	1 PC
E	THREADING POLE	2 PCS
F	MOUNTING NUT	2 PCS

PRODUCT ASSEMBLY



INCLUDED ASSEMBLY HARDWARE

G Plastic wire connectors	H mounting screws

ASSEMBLY INSTRUCTIONS

- 1.REMOVE ALL PACKING CONTENTS AND PARTS FROM THE CARTON(S)CAREFULLY.
- 2.PLEASE BE SURE YOU HAVE ALL PARTS INDICATED BEFORE YOU BEGIN ASSEMBLY.
- 3.TURN OFF POWER TO THE JUNCTION BOX WHERE THE LAMP WILL BE INSTALLED.
- 4.REMOVE THE MOUNTING PLATE (A) FROM THE BACK PLATE (B) BY LOOSE 2PCS MOUNTING NUT (F).
- 5.NSCREW THE SOCKET RING(D)OFF THE SOCKET. ATTACH SHADE(C) TO THE SOCKET AND SECURE WITH SOCKET RING TILL TIGHT.
- 6.PULL THE ELECTRICAL CORD OF "J BOX"THROUGH THE EXIT HOLE OF THE MOUNTING PLATE(A)
7. ATTACH THE GROUND WIRE FROM THE FIXTURE TO THE GROUND JUNCTION BOX WIRE FROM THE OUTLET (USUALLY GREEN OR BARE WIRE). FASTEN EACH TOGETHER WITH A PLASTIC WIRE CONNECTOR (G) AND WRAP THE CONNECTION WITH ELECTRICAL TAPE. IF YOUR OUTLET BOX DOES NOT HAVE A GROUND WIRE, INSERT THE GREEN GROUND SCREW INTO THE MOUNTING PLATE (A) FACING DOWN, AND WRAP THE FIXTURE'S BARE GROUND WIRE AROUND THE GROUND SCREW. **IT IS IMPERATIVE THAT THE OUTLET BOX IN YOUR HOME BE PROPERLY GROUNDED.**
8. CONNECT THE NEUTRAL FIXTURE WIRE TO THE NEUTRAL JUNCTION BOX WIRE (USUALLY WHITE). FASTEN EACH TOGETHER WITH A WIRE CONNECTOR (G) AND WRAP THE CONNECTION WITH ELECTRICAL TAPE. BE SURE NO STRANDS ARE EXPOSED.
- 9.CONNECT THE HOT FIXTURE WIRE TO THE HOT JUNCTION BOX WIRE (USUALLY BLACK). FASTEN EACH TOGETHER WITH A PLASTIC WIRE CONNECTOR (G) AND WRAP THE CONNECTION WITH ELECTRICAL TAPE. BE SURE NO WIRE STRANDS ARE EXPOSED. **DO NOT REVERSE THE HOT AND NEUTRAL CONNECTIONS OR SAFETY WILL BE COMPROMISED.**
10. GENTLY TUCK THE WIRE CONNECTIONS NEATLY INTO THE CEILING JUNCTION BOX.
- 11.ATTACH THE MOUNTING PLATE (A) TO THE OUTLET BOX USING THE MOUNTING SCREWS(H).TIGHTEN WITH A SCREWDRIVER(J).
- 12.ATTACH THE BACK PLATE(B) TO THE MOUNTING PLATE(A) ,AND BE SURE 2PCS THREADING POLES(E) PASS THROUGH THE HOLES,THEN USE 2PCS MOUNTING NUT(F) TO TIGHT IT TILL SECURE.
- 13.INSTALL ONE TYPE A 60W BULB(OR SUITABLE CFL 16W/LED 13W BULB,NOT INCLUDED)INTO THREADED SOCKET. **DO NOT EXCEED SPECIFIED WATTAGE.**
- 14.RESTORE POWER TO THE JUNCTION BOX AND TEST FIXTURE

CARE & MAINTENANCE

DUST WITH A DRY CLOTH.

DISCLAIMERS

FOR CUSTOMER SERVICE QUESTIONS CALL 1-800-338-2150 WE RECOMMEND THE INSTALLATION OF THIS ELECTRICAL LIGHT FIXTURE TO BE DONE BY A LICENSED ELECTRICIAN.
 ARTERIORS HOME:972.488.9800
 ARTERIORS CONTRACT:972.488.9800 EXT.321

ARTERIORS