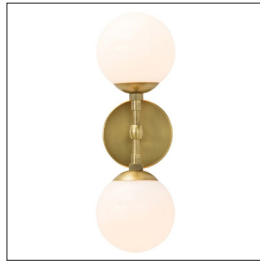
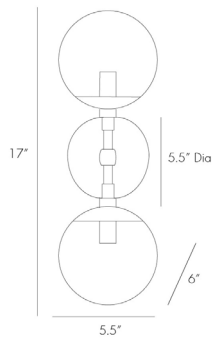


# ARTERIOS

## POLARIS SCONCE



49961  
 H: 17 IN, W: 5.5 IN, D: 6 IN  
 Antique Brass  
 Contract Suitable As Is

A perfect balance of proportions, this double sconce sets frosted glass globes against antique brass arms and back plate. It's a sophisticated element for modern settings and can be horizontally or vertically mounted. Damp-rated, although limited covered outdoor conditions may affect finish.

### APPEARANCE

Material	Glass, Steel
Material Type	Plated
Finish	Antique Brass, White
Top Coat/Sealant	true
Link	Welded

### DIMENSIONS

Center Of Mount From Btm	8 IN
Arm	H: 8 IN, W: .75 IN, D: 3 IN
Backplate	Dia: 5.00 IN
Mount	Dia: 4.50 IN

### WIRING

	UL,EU,SA
Rating	Damp
Cord	1 FT, Black, SVT
Socket	2, Type B=-E12 Other
Maximum Watt	25
Voltage	110-120 V

### CERTIFICATIONS

Certifications	Mexico European Union, United Arab Emirates, United States, Canada
----------------	---

### COMPLIANCY

UL/ETL	Yes
CB	Yes
RoHS	true

### SHIPPING

Product Weight	2.5 LBS
Gross Weight 1	6 LBS
Shipping Box 1	H: 19 IN, L: 10 IN, W: 10 IN

### ADDITIONAL INFO

Features	Assembly Required
Hanging Orientation	Horizontal and Vertical

### CONTRACT

Contract Suitable	true
-------------------	------