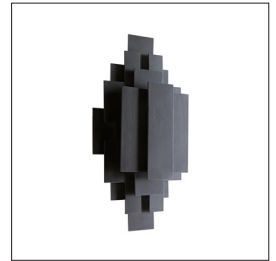
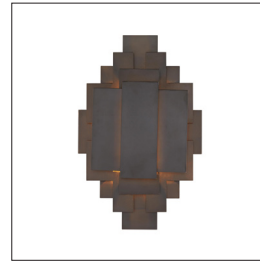
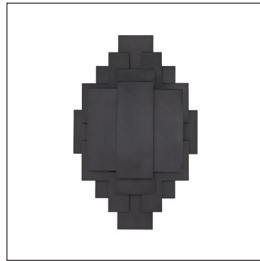
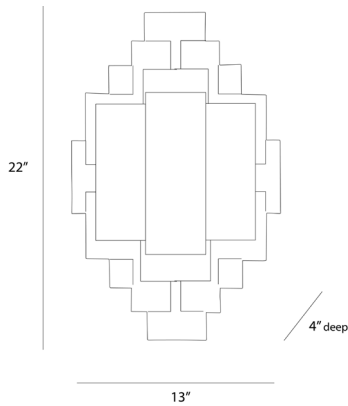


# ARTERIOS

## TRINIDAD SCONCE



44325  
H: 22 IN, W: 13 IN, D: 4 IN  
Waxed Blackened Iron  
Contract Suitable As Is

Inspired by the 1950s brutalist movement, this one-light, iron sconce is crafted out of hand cut geometric shapes, welded together into a tribal-like pattern. The wax finish helps keep the sconce natural – perfect for horizontal or vertical mounting. Damp-rated, although limited covered outdoor conditions may affect finish.

### APPEARANCE

Material	Iron
Finish	Blackened Iron
Top Coat/Sealant	true

### DIMENSIONS

Center Of Mount From Btm	11 IN
Backplate	H: 10 IN, W: 6 IN, D: .25 IN
Mount	H: 5.5 IN, W: 6 IN

### WIRING

	UL,EU,SA
Rating	Damp
Cord	1 FT, Clear/Silver, SVT
Socket	2, Type A- E26 Other
Maximum Watt	25
Voltage	110-120 V

### CERTIFICATIONS

Certifications	Mexico European Union, United Arab Emirates, United States, Canada
----------------	---

### COMPLIANCY

UL/ETL	Yes
CB	Yes
RoHS	true

### SHIPPING

Product Weight	13 LBS
Gross Weight 1	15.7 LBS
Shipping Box 1	H: 8 IN, L: 25 IN, W: 19 IN

### ADDITIONAL INFO

Features	ADA, Assembly Required
Hanging Orientation	Horizontal and Vertical

### CONTRACT

Contract Suitable	true
-------------------	------