

# Arnsberg

Das Licht

customerservice@arnsberg.com

www.arnsberg.com

## ASSEMBLY INSTRUCTIONS

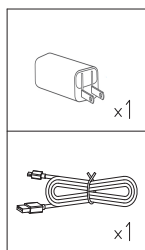
### Epoque

# 527680142

#### Technical Data

- Power: 2.2 W
- Operating Voltage: DC 3.7 V
- Luminous flux 146LM
- LED PHILIP 3014 / 25 PCS
- Lithium Battery: 18650/2200 MAH\*2
- Charge: 6 hrs
- Work time: 9 hrs
- Cass: II
- Safety type: IP54

#### Parts Included



#### CSA / UL Safety Requirements

CSA/UL requires that these IMPORTANT SAFETY INSTRUCTION be listed:



#### **WARNING**

Disconnect ALL power before servicing.  
Multiple power sources may be present.  
Failure to do so may cause property  
damage, personal injury or death.

#### Care Instructions

Arnsberg suggests using only a micro fiber cleaning cloth to clean this fixture. If required, a slightly damp cleaning cloth may be used to spot clean. Do not use common household cleaners on this fixture, as the final finish may be damaged as a result. Enjoy your new Arnsberg fixture.

# Arnsberg

customerservice@arnsberg.com

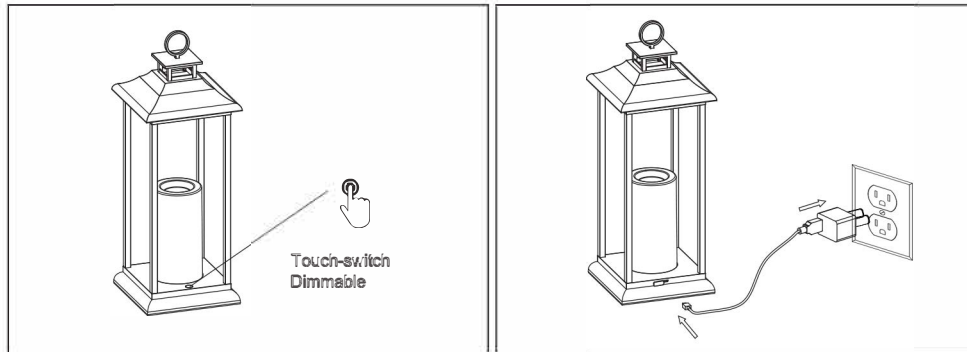
www.arnsberg.com

## ASSEMBLY INSTRUCTIONS

### Epoque

# 527680142

#### Assembly:



This lamp is equipped with safety overcharge protection.

#### Operating

1. Before the first use, please remove the silicone protective cover.
2. Insert the charging port to the lamp, and charge for 6 hours until the indicator light is green.
3. Tap button to toggle on/off
4. Press and hold button to dim light gradually.
5. When the lamp's battery is low, the indicator light will turn red. Reconnect to power to charge.