

ASSEMBLY INSTRUCTIONS

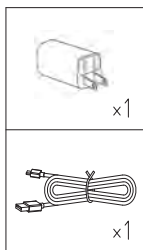
ALESSANDRO VOLTA

527580101/02

Technical Data

- Power: 2.2 W
- Operating Voltage: DC 3.7 V
- Luminous flux 192LM
- LED PHILIP 3014 / 20PCS
- Lithium Battery: 18650/2200 MAH*2
- Charge: 5-7 Hrs
- Work time: 12 Hrs
- Class: II
- Safety type: IP54

Parts Included



CSA / UL Safety Requirements

CSA/UL requires that these IMPORTANT SAFETY INSTRUCTION be listed:



WARNING

Disconnect ALL power before servicing.
Multiple power sources may be present.
Failure to do so may cause property
damage, personal injury or death.



Care Instructions

Arnsberg suggests using only a micro fiber cleaning cloth to clean this fixture. If required, a slightly damp cleaning cloth may be used to spot clean. Do not use common household cleaners on this fixture, as the final finish may be damaged as a result. Enjoy your new Arnsberg fixture.

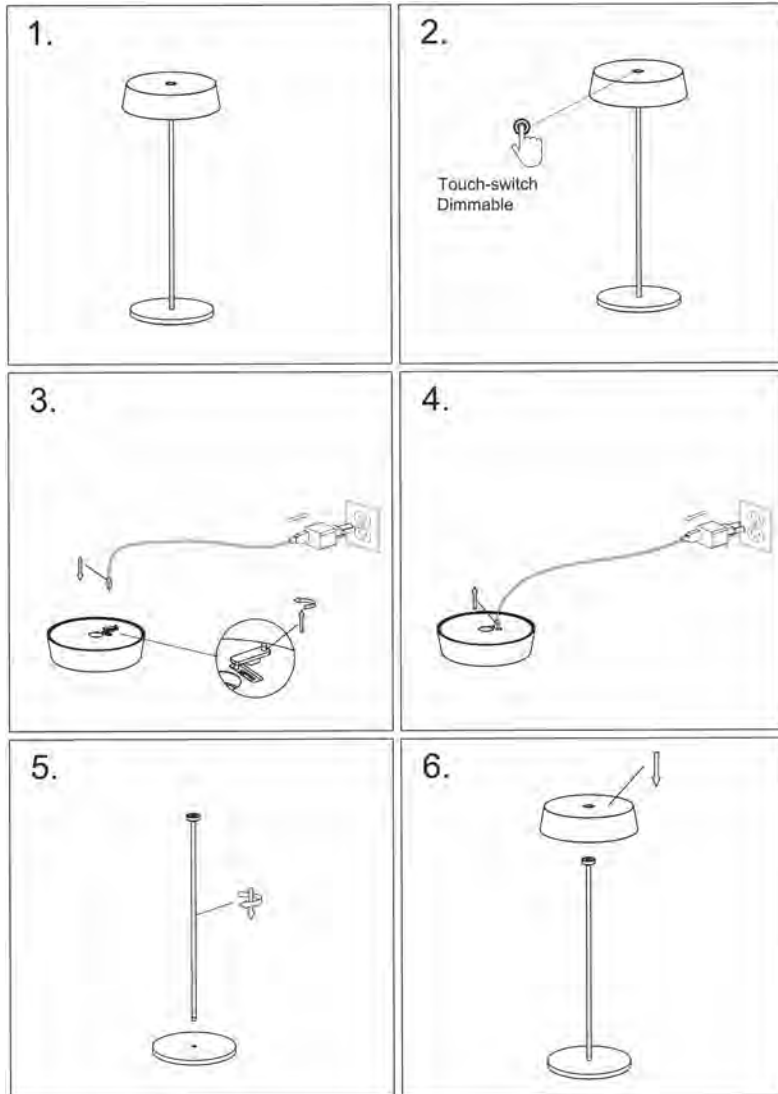
Arnsberg

customerservice@arnsberg.com

www.arnsberg.com

ASSEMBLY INSTRUCTIONS ALESSANDRO VOLTA 527580101/02

Assembly:



Operating

1. Before the first use, lift the silicone protective cover from the lamp head to charge.
2. Insert the charging port to the lamp, and charge for 5-7 hours until the indicator light is green.
3. Tap button to turn on/off
4. Press and hold button to dim light gradually.
5. When the lamp's battery is low, the light will turn off.
6. Apply pressure to the base to remove LED module. Reconnect to power to charge.

This lamp is equipped with safety overcharge protection.