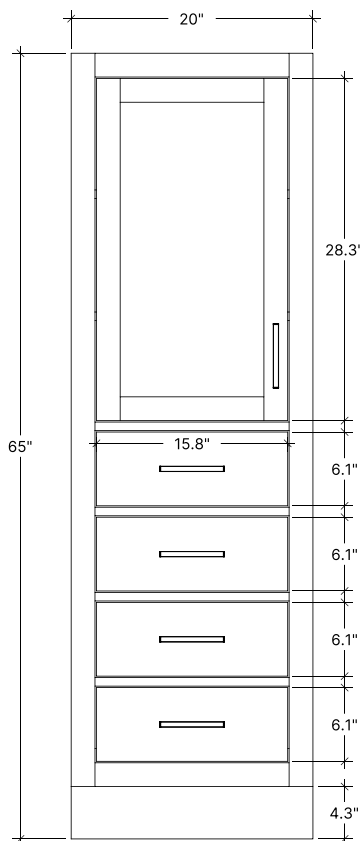


## DIMENSIONS

65" H x 20" W x 16" D



FRONT VIEW



## FEATURES

- Solid wood frame
- Dovetail joints structure
- Soft closing doors & drawer
- Adjustable shelf
- Sherwin-Williams Paint Coat
- Anti-tip kit included

## HARDWARE FINISHES\*



Brushed Nickel    Satin Brass    Matte Black    Polished Chrome

*\*Hardware comes preinstalled with the illustrated option. Other finishes are available on our online store if you prefer a different one.*

## AVAILABLE COLORS



White    Grey    Midnight Blue    Oak    Black

SIDE VIEW

