

# MONROE 72" DOUBLE SINK BASE CABINET

# ARIEL

## BASE CABINET DIMENSIONS

72" W x 21.5" D x 34.5" H



## FEATURES

- Solid wood frame and Plywood
- Soft-close system
- Dovetail construction
- Ample storage

## HARDWARE FINISHES\*



Brushed Nickel    Matte Black

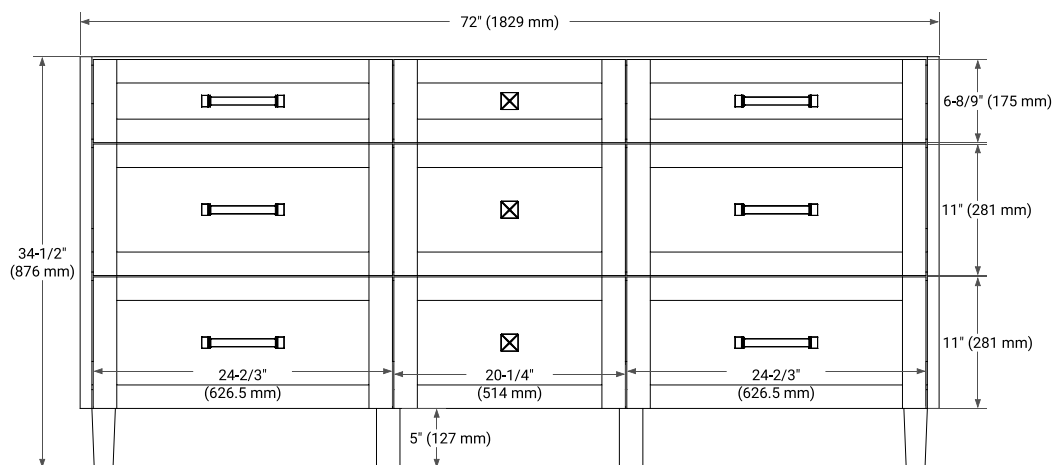
\* Hardware will come preinstalled. Other options are available in the store if you want a different finish.

## AVAILABLE COLORS

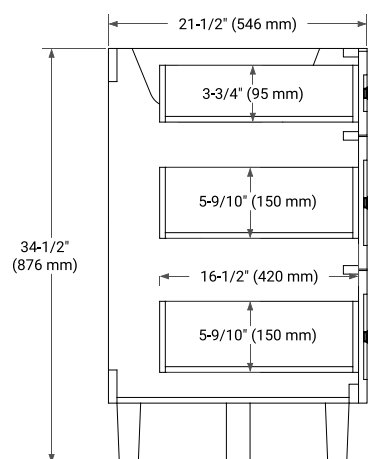


White    Grey    Midnight Blue    White Oak

## FRONT VIEW



## SIDE VIEW



## PLAN VIEW

