

# HAMLET 54" SINGLE SINK BASE CABINET

# ARIEL

## BASE CABINET DIMENSIONS

54" W x 21.5" D x 34.5" H



## FEATURES

- Solid wood frame & plywood panels
- Dovetail drawers and joints
- Soft closing doors & drawers

## HARDWARE FINISHES\*



Brushed Nickel    Satin Brass    Matte Black    Polished Chrome

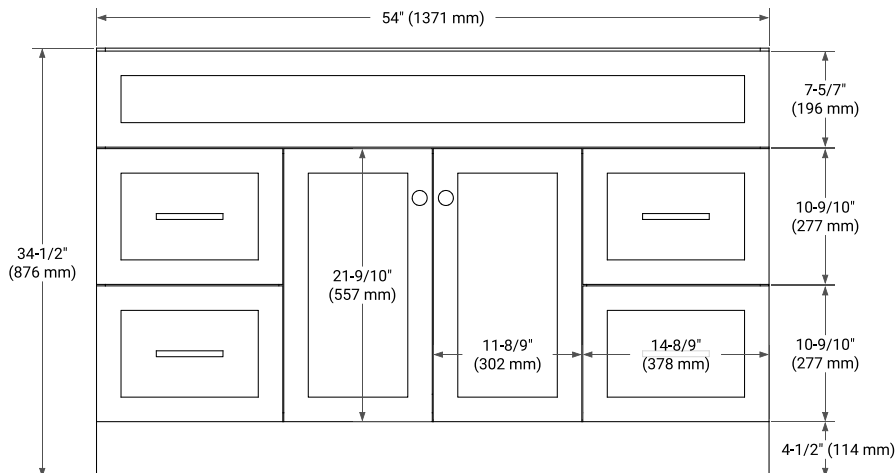
*Hardware comes preinstalled with the illustrated option.  
Other finishes are available on our online store if you prefer a different one.*

## AVAILABLE COLORS

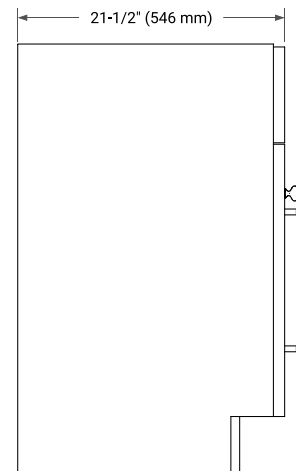


White    Grey    Midnight Blue    Black

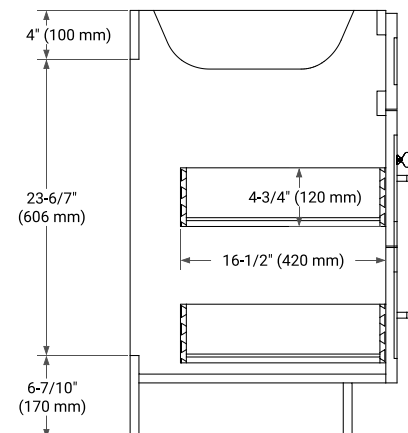
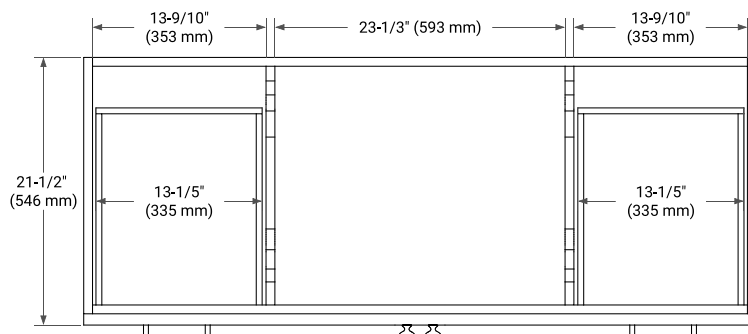
## FRONT VIEW



## SIDE VIEW



## PLAN VIEW



# ARIEL

54.25" W x 22" D x 1.5" H

Carrara White Quartz

- Solid countertop with mitered edges & seams
- Undermount white oval sink
- Pre-drilled for 8" widespread faucet

- Countertop
- Matching Backsplash
- Oval Sink

Technical drawing of a rectangular plate with a central oval hole and three circular holes. The dimensions are as follows:

- Overall width: 54-1/4" (1378 mm)
- Overall height: 22" (559 mm)
- Distance from left edge to center of oval hole: 19" (482.5 mm)
- Distance from right edge to center of oval hole: 13" (330 mm)
- Distance from top edge to center of oval hole: 4" (102 mm)
- Distance from left edge to center of left circular hole: 27-1/8" (689 mm)
- Distance from center of oval hole to center of left circular hole: 16-1/4" (413 mm)
- Distance from center of oval hole to center of right circular hole: 16-1/4" (413 mm)
- Distance from center of oval hole to center of top circular hole: 8" (204 mm)
- Distance from center of oval hole to center of bottom circular hole: 8" (204 mm)
- Distance from center of oval hole to center of right circular hole: 1-3/8" (35 mm)
- Distance from center of oval hole to center of left circular hole: 2-1/2" (63.5 mm)