

CAMBRIDGE 66" DOUBLE SINK BASE CABINET

ARIEL

BASE CABINET DIMENSIONS

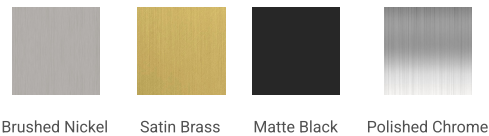
66" W x 21.5" D x 34.5" H



FEATURES

- Solid wood frame & plywood panels
- Dovetail drawers and joints
- Soft closing doors & drawers

HARDWARE FINISHES\*

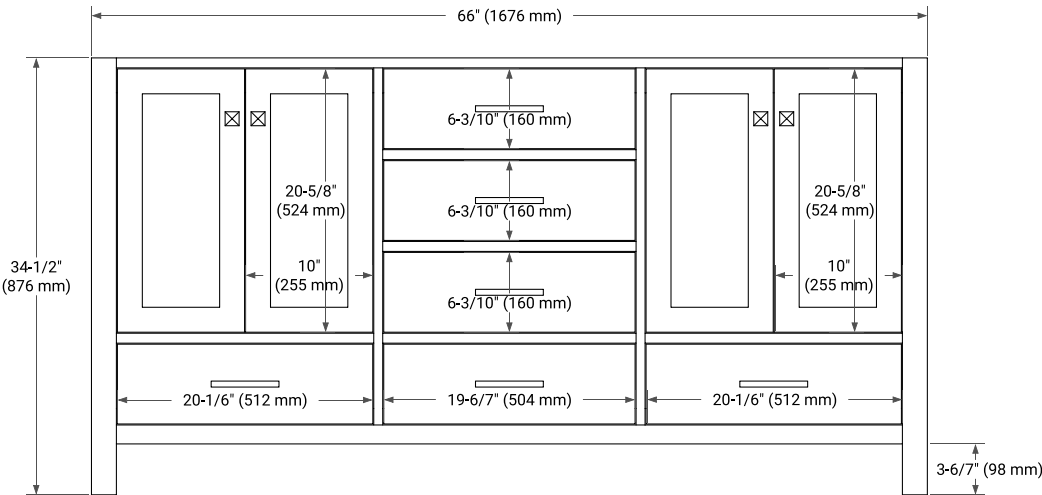


Hardware comes preinstalled with the illustrated option.  
Other finishes are available on our online store if you prefer a different one.

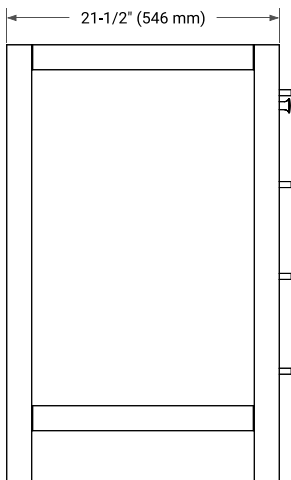
AVAILABLE COLORS



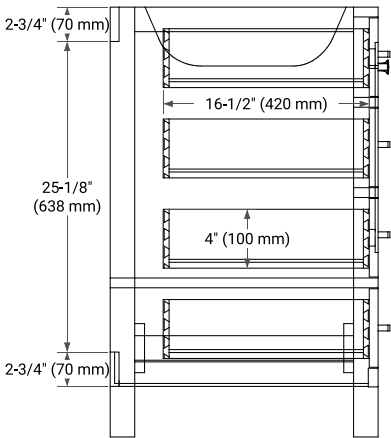
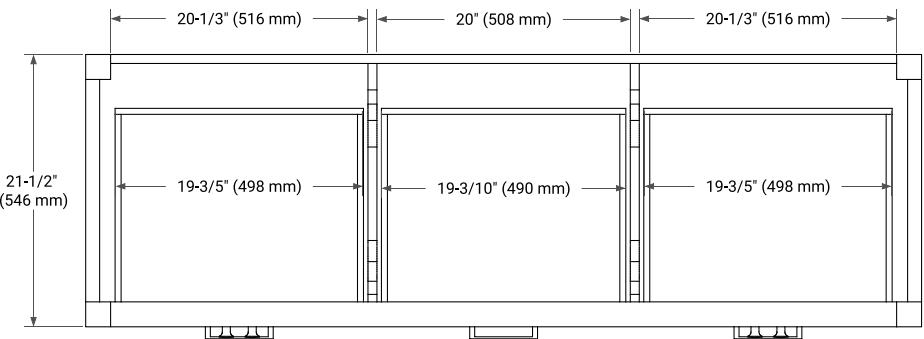
FRONT VIEW



SIDE VIEW



PLAN VIEW



# 66" DOUBLE RECTANGLE SINK COUNTERTOP WITH 1.5 IN. THICKNESS

# ARIEL

## OVERALL DIMENSIONS

66.25" W x 22" D x 1.5" H

## COUNTERTOP OPTIONS



Carrara White Quartz

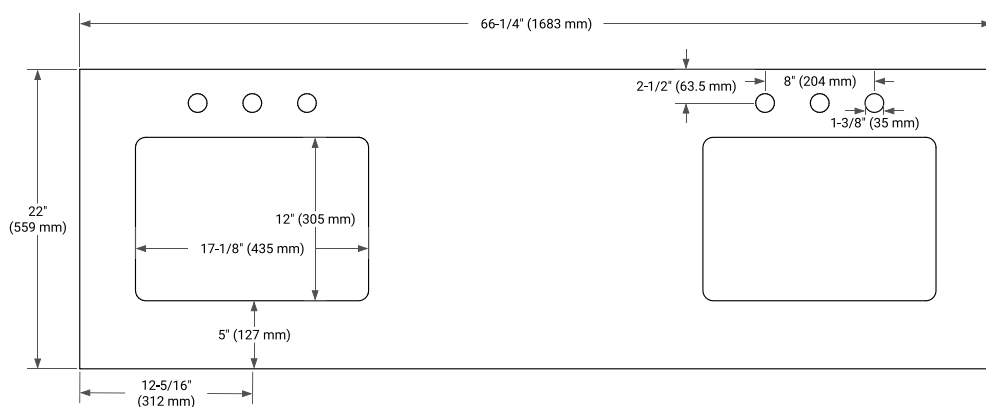
## FEATURES

- Solid countertop with mitered edges & seams
- Undermount white rectangular sink
- Pre-drilled for 8" widespread faucet

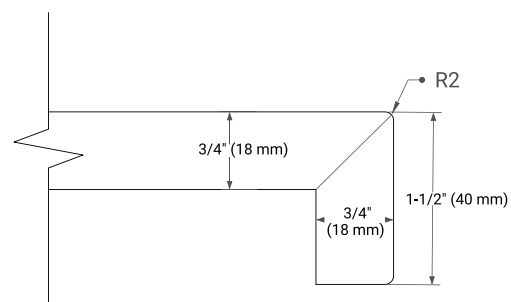
## INCLUDED

- Countertop
- Matching Backsplash
- Rectangle Sinks

## COUNTERTOP PLAN VIEW



## EDGE SIDE VIEW



## THREE DIMENSIONAL COUNTERTOP VIEW

