

# ARIEL LANGFORD - PULL HANDLE

P305



## DIMENSION

- Center to center: 4.625"
- Length: 5"
- Projection: 1.13"

## HARDWARE FINISHES



Brushed Nickel



Polished Chrome

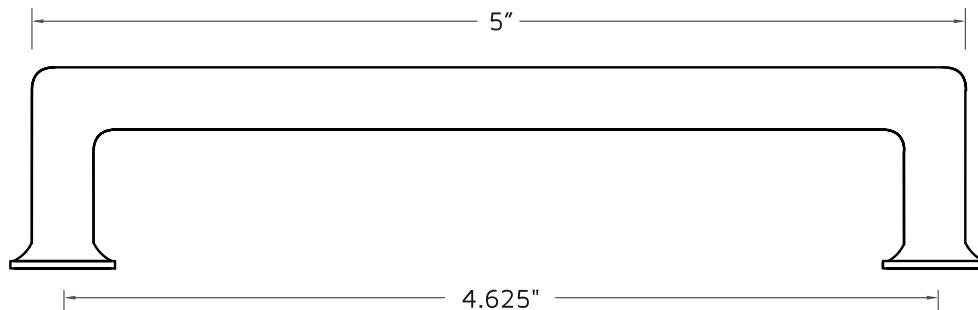


Satin Brass

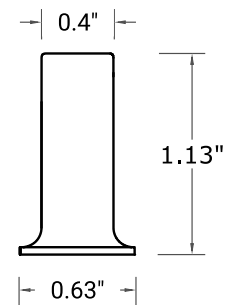


Matte Black

## FRONT VIEW



## SIDE VIEW



# ARIEL LANGFORD - PULL HANDLE

P305



## DIMENSION

- Center to center: 4.625"
- Length: 5"
- Projection: 1.13"

## HARDWARE FINISHES



Brushed Nickel



Polished Chrome

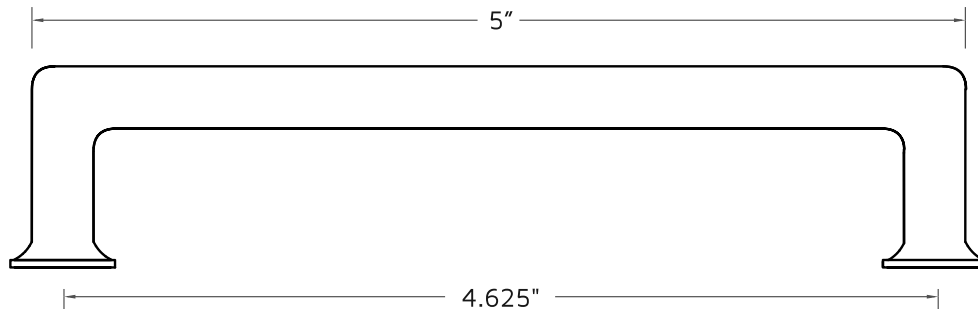


Satin Brass

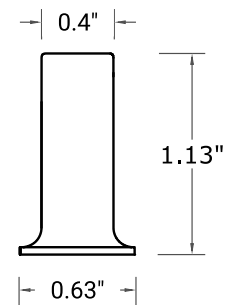


Matte Black

## FRONT VIEW



## SIDE VIEW



# ARIEL LANGFORD - PULL HANDLE

P305



## DIMENSION

- Center to center: 4.625"
- Length: 5"
- Projection: 1.13"

## HARDWARE FINISHES



Brushed Nickel



Polished Chrome

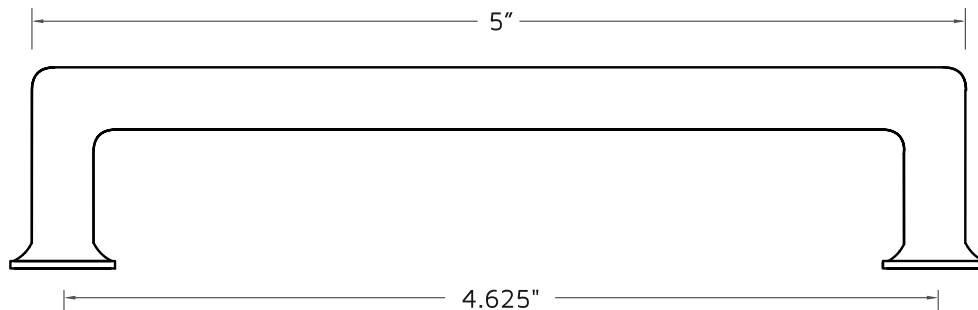


Satin Brass

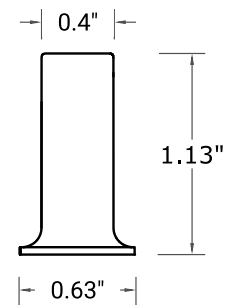


Matte Black

## FRONT VIEW



## SIDE VIEW



# ARIEL LANGFORD - PULL HANDLE

P305



## DIMENSION

- Center to center: 4.625"
- Length: 5"
- Projection: 1.13"

## HARDWARE FINISHES



Brushed Nickel



Polished Chrome

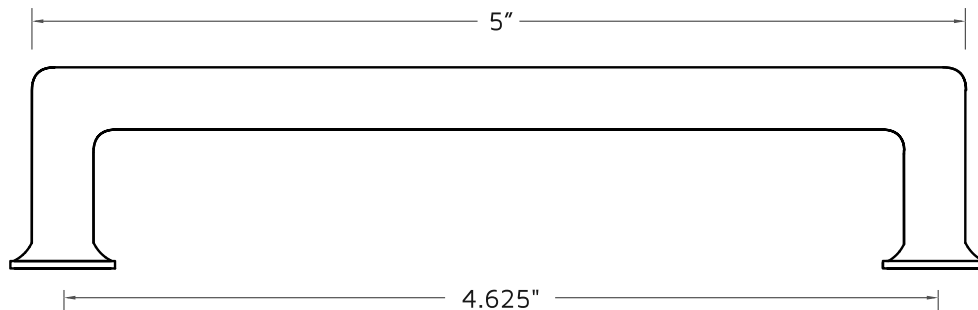


Satin Brass



Matte Black

## FRONT VIEW



## SIDE VIEW

