

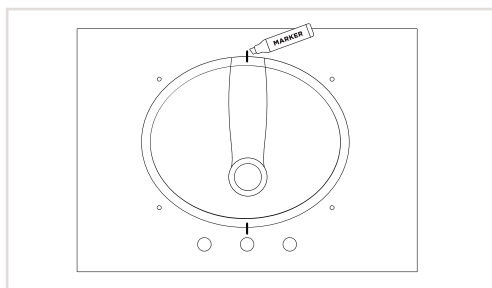


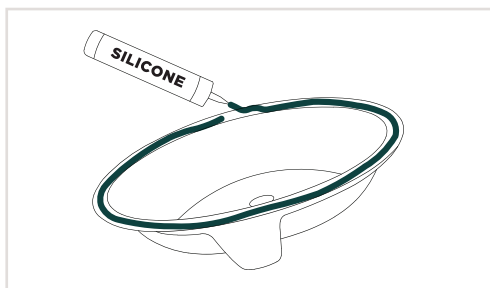
STOP, please make sure the cabinet is level before installing the countertop

COMPONENTS	TOOLS REQUIRED	HARDWARE
<ul style="list-style-type: none"> • Countertop • Sink basin(s) • Backsplash 	<ul style="list-style-type: none"> • Permanent marker • Caulking gun + Silicone 	<div style="display: flex; justify-content: space-around;"> <div style="text-align: center;">  <p>A</p> <p>Wing nut bolts (4)</p> </div> <div style="text-align: center;">  <p>B</p> <p>Washers (4)</p> </div> </div> <div style="text-align: center; margin-top: 20px;">  <p>C</p> <p>Undermount clips (4)</p> </div>



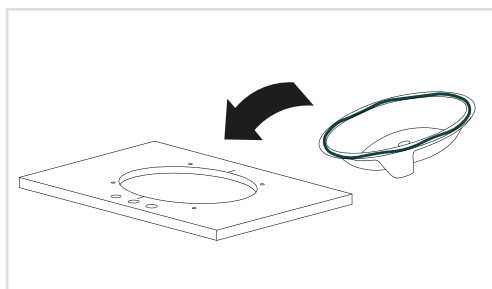
STEP 1 - PLACE & TRACE

Place the sink basin on the underside of the countertop, face down. Make sure it is centered over the opening in the countertop. Draw two guiding lines at the topmost and bottommost positions of the sink, intersecting both the countertop and the sink for positioning purposes.



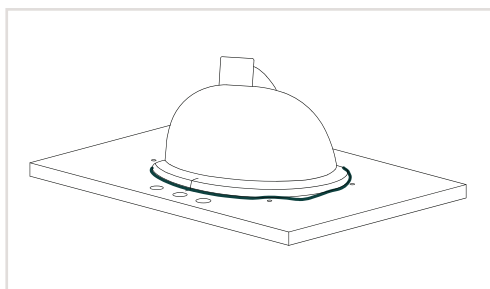
STEP 2 - PREPARE SINK BASIN

Using a caulking gun, apply an ample amount of silicone glue of your choice to the top side of the sink basin edge.



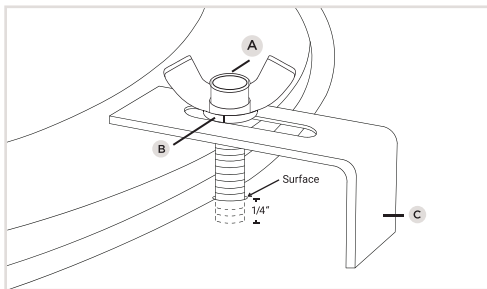
STEP 3 - FLIP & SET IN PLACE

Carefully flip the basin over and place it so the guiding lines matches up between the sink and the countertop.



STEP 4 - DRY & SET

Press down on the sink basin to seal the silicone. Remove any excessive silicone on the outer edge. Follow the recommended drying time found on your silicone product, typically 12 to 24 hours.



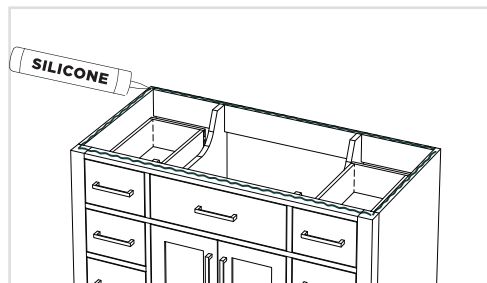
STEP 5 - ATTACH UNDERMOUNT CLIPS

Please insert the Wing Nut Bolt (A) through the Washer (B) and then guide it through the opening of the Undermount Clip (C). Insert the bolt into the threaded hole located on the underside of the countertop. ONLY Hand-tighten the bolt until the clip sits approximately 1/4" below the countertop surface. Ensure the Sink is aligned and secured in place by tightening the Wing Nut Bolt (A) as needed.



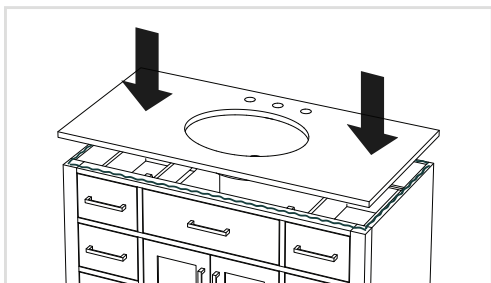
STEP 6 - ATTACH BASE CABINET TO WALL

Place cabinet in desired location and determine where the wall studs are.



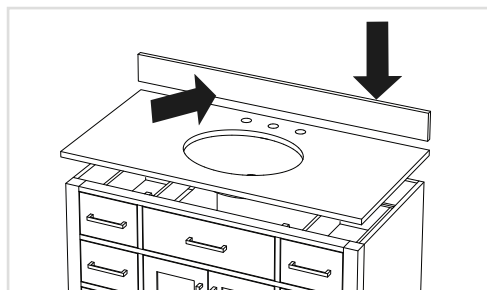
STEP 7 - PREPARE BASE CABINET

Using a caulking gun, apply silicone around the top of the base cabinet.



STEP 8 - SET COUNTERTOP IN PLACE

Carefully place the countertop, with the sink attached, onto the cabinet and press down firmly. Wipe away any excess silicone immediately.



STEP 9 - SET BACKSPLASH

After the vanity is in place, use a caulking gun to apply silicone to the back and bottom unfinished sides of the backsplash. Press firmly down and back to set in place. Remove any excess silicone.