

MAGNOLIA 72" DOUBLE SINK BASE CABINET

ARIEL

S072D

BASE CABINET DIMENSIONS

72" W x 21.5" D x 34.5" H

FEATURES

- Solid wood frame & plywood panels
- Dovetail drawers and joints
- Soft closing doors & drawers

HARDWARE FINISHES



Brushed Nickel Satin Brass Matte Black Polished Chrome

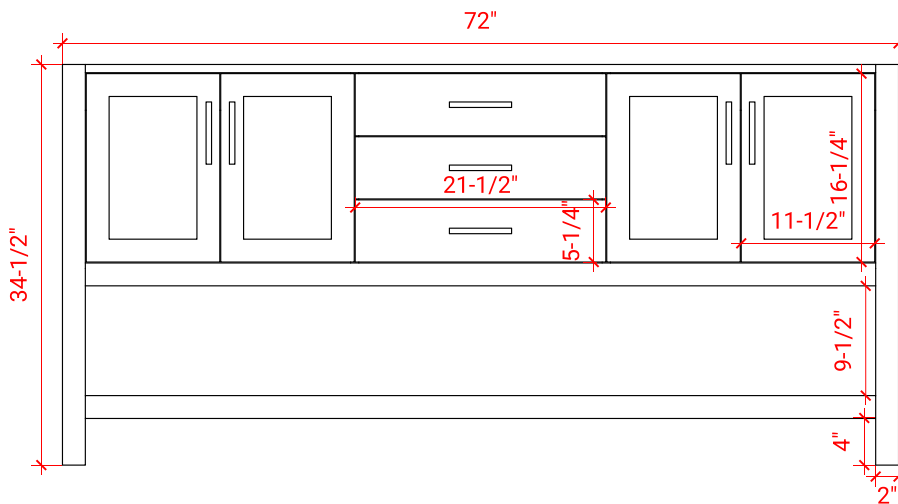
AVAILABLE COLORS



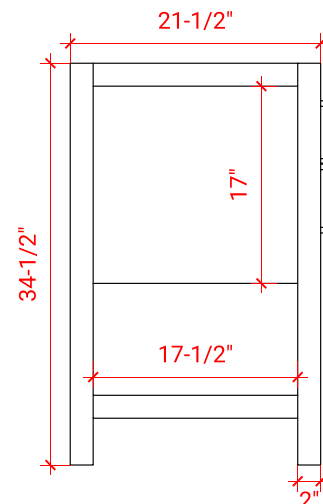
White Grey Midnight Blue



FRONT VIEW



SIDE VIEW



PLAN VIEW

