

TAYLOR 60" DOUBLE SINK CABINET

ARIEL

Q060D-BC

BASE CABINET DIMENSIONS

60" W x 21.5" D x 34.5" H

FEATURES

- Hardwood plywood panels
- Dovetail drawers joints
- Soft closing doors & drawers
- Hidden drawers behind cabinet doors
- Designer toe kick

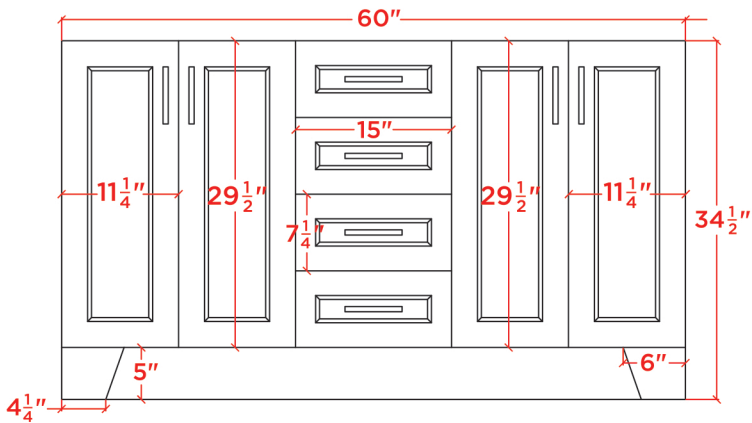
HARDWARE FINISHES



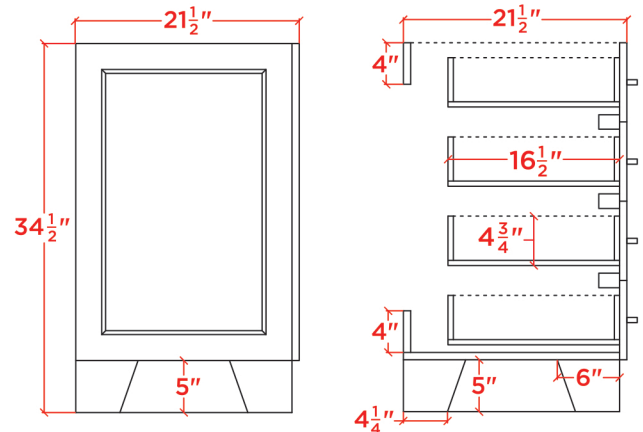
AVAILABLE COLORS



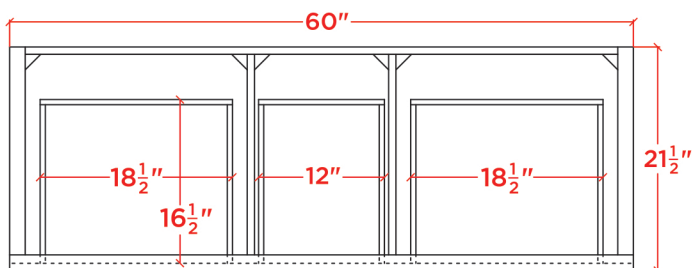
FRONT VIEW



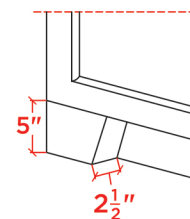
SIDE VIEW



PLAN VIEW



BASE/TOEKICK



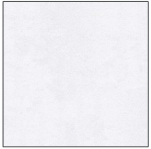
61" DOUBLE OVAL SINK COUNTERTOP

ARIEL

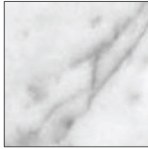
OVERALL DIMENSIONS

61" W x 22" D x 1.5" H

COUNTERTOP OPTIONS



White Quartz
WQ-061D-OVL-CT



Carrara Marble
CW-061D-OVL-CT

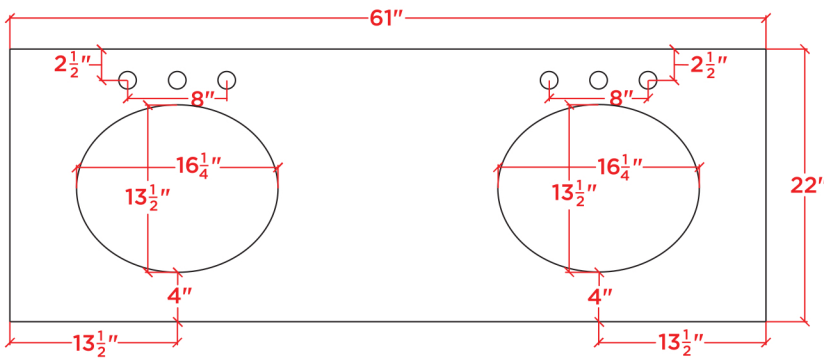
FEATURES

- Solid countertop with mitered edges & seams
- Undermount white oval sink
- Pre-drilled for 8" widespread faucet

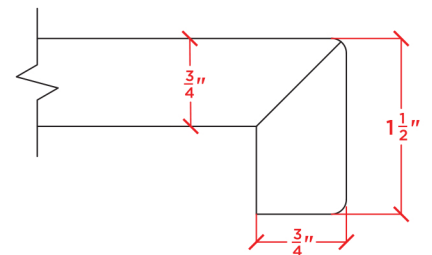
INCLUDED

- Countertop
- Matching Backsplash
- Oval Sinks

COUNTERTOP PLAN VIEW



EDGE SIDE VIEW



THREE DIMENSIONAL COUNTERTOP VIEW

