

# 260330S – EVERYDAY TUB/SHOWERS

inches (mm)

60 x 30 x 72 (1525 x 760 x 1830) • Fax on Demand #1250



## FEATURES

- Tub-shower
- Smooth wall finish
- Three integral toiletry shelves
- Slip resistant, textured bottom
- Left or right drain location
- Gelcoat surface
- 5-year limited warranty

## OPTIONS

- \*Grab bar reinforcement (side walls only)
- Factory installed assisted care grab bars
- Designer drain, waste & overflow
- Shower Door Series L0516

## AQUATIC ADVANTAGE

- 6 manufacturing facilities
- Private fleet
- Centralized customer service
- Field support
- 24-hour fax-on-demand

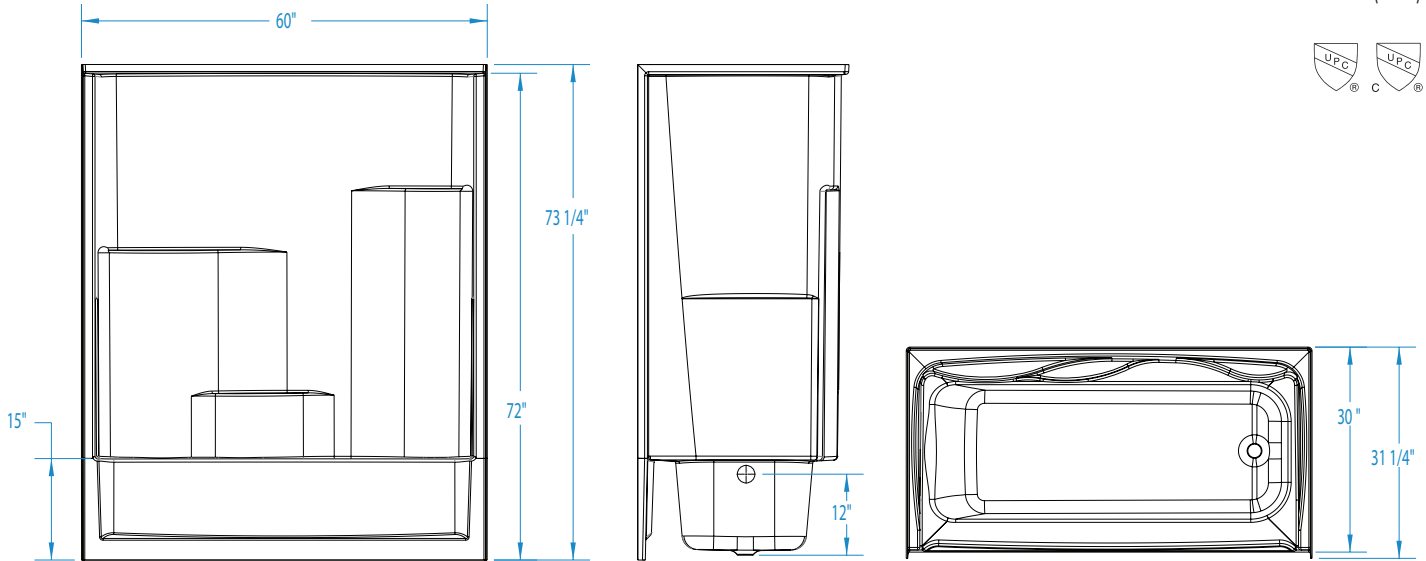
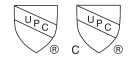
## COLOR OPTIONS

Stock	Premium
Almond	Black
Biscuit	Mexican Sand
Bone	Sand Bar
Linen	Sterling Silver
White	



# 260330S

60 x 30 x 72 (1525 x 760 x 1830)  
inches (mm)



**FEATURES** lbs (kg) Dimensional Tolerance  $\pm 3/8"$ . Dimensions needed for site preparation should be measured from the unit. Aquatic assumes no responsibility for preparatory work.

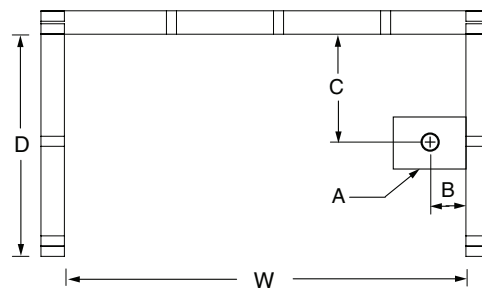
Model #	Material	Wall Finish	Jets	Motor	Controls	Drain	Net Wt.	Pkg. Wt.
Tub-Shower #260330S	Gelcoat	Smooth	-	-	-	LH or RH	117 (53)	122 (55)

## DIMENSIONS

Specifications	inches (mm)
Width: Overall / Net	60 (1525)
Depth: Overall / Net	31 1/4 (795) / 30 (760)
Height: Overall / Net	73 1/4 (1860) / 72 (1830)
Enclosure Opening	56 (1420)
Skirt Height	15 (380)
Drain Rough-In (from Back Wall)	15 3/8 (390)
Drain Rough-In (from Side Wall)	2 (50)
Drain: Diameter / Clearance	2 (50) / 3/4 (20)

## FRAMING DIMENSIONS inches (mm)

Type	D Depth	W Width	H Height	A	B	C
Alcove	31 1/4 (795)	60 1/8 (1525)	-	Box Out	2 (50)	15 3/8 (390)



## SUMP DATA

Top of Drain to Bottom of Overflow	Capacity to Overflow gal (ltr)	Min. Operating Capacity gal (ltr)	WIDTH @ centerline		DEPTH @ centerline	
			Top	Bottom	Top	Bottom
9 3/8 (245)	34 (128)	-	52 1/4 (1330)	46 3/4 (1190)	19 7/8 (505)	18 1/4 (465)