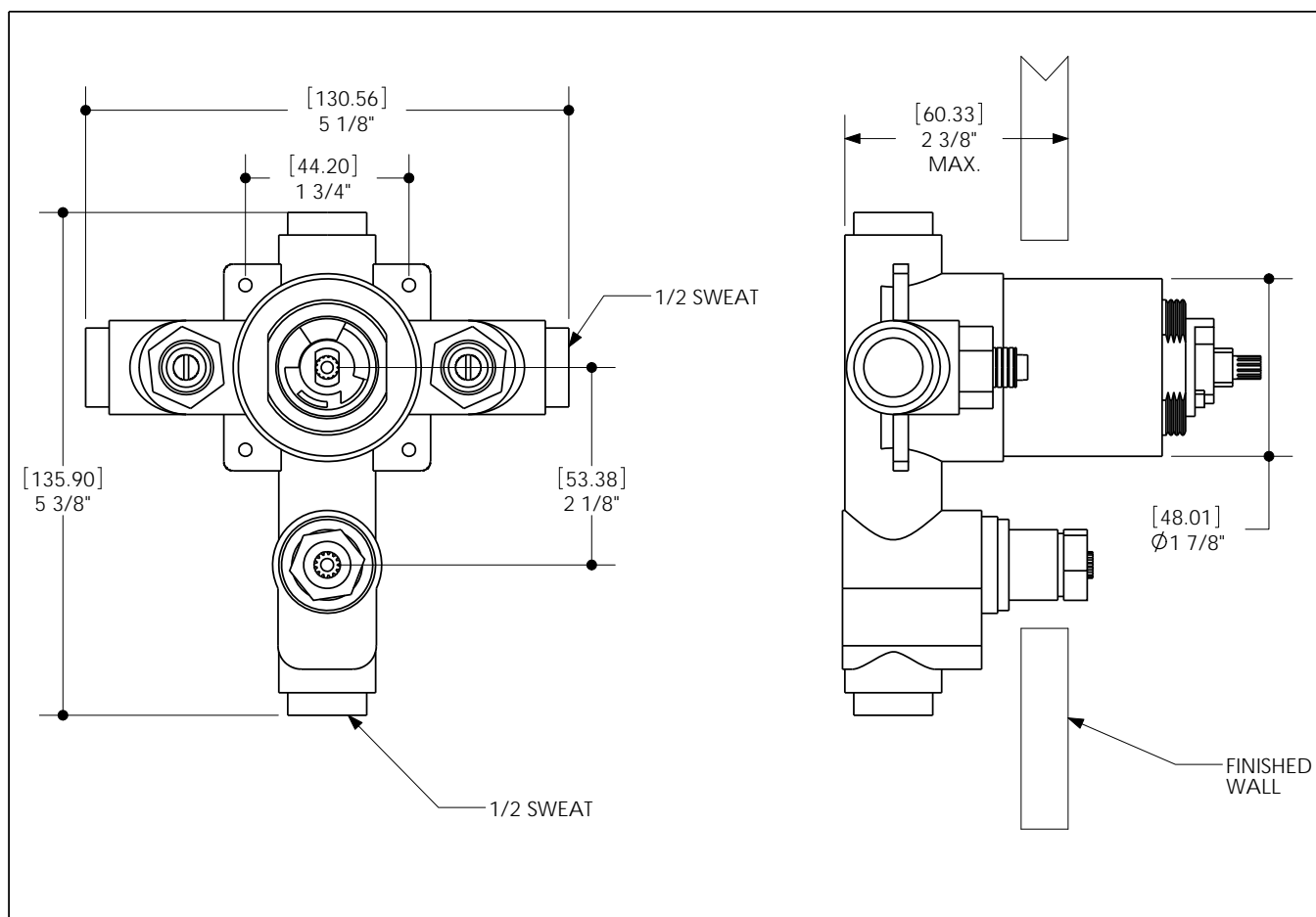
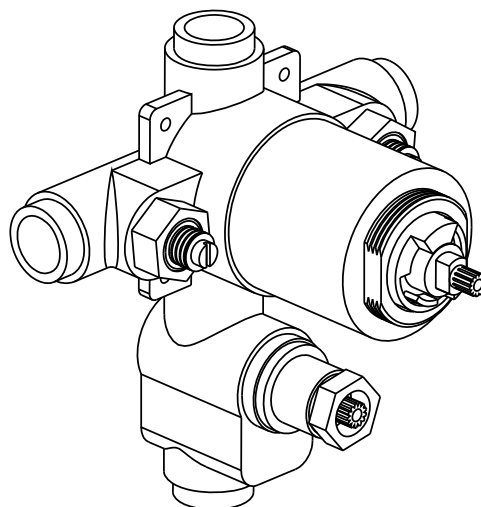


TECHNICAL SPECIFICATION

FEATURES

- Solid brass construction
- Check-valve stop
- 1/2 pressure balance valve
- Diverter
- 5 GPM
- CSA approved



Exploded view diagram of a vehicle's ABS hydraulic modulator and wheel cylinder assembly. The diagram shows the main hydraulic modulator on the left, connected to a wheel cylinder on the right via a flexible brake hose. Various components are labeled with part numbers:

- ABCAHC190
- ABFP08121
- ABSP00361
- ABSP42003
- ABSP42004
- ABSP54002
- ABSP00805
- ABSP42140
- ABSP0099
- ABSP00805
- ABSP00422