

TANKLESS CONDENSING HIGH EFFICIENCY

FEATURES:

ULTRA-LOW NOX CONDENSING TECHNOLOGY WITH UP TO 0.91 UNIFORM ENERGY FACTOR (UEF)

COMPLIES WITH CALIFORNIA SCAQMD RULE 1146.2 AND OTHER AIR QUALITY MANAGEMENT DISTRICTS WITH SIMILAR NOX EMISSION REQUIREMENTS OF 14 NG/J OR 20 PPM

OPERATES ON 1/2" GAS LINE WITH STANDARD GAS PRESSURE

DURABLE HEAT EXCHANGER

- Copper Primary Heat Exchanger
- Secondary Heat Exchanger is made of Marine Grade Type 316L Stainless Steel to protect against corrosion

CONTINUOUS MAXIMUM FLOW RATES UP TO 6.6 GPM

AVAILABLE IN NATURAL GAS OR PROPANE (LP)

ELECTRONIC IGNITION - NO PILOT LIGHT

INDOOR MODEL - INCLUDES A BUILT-IN TEMPERATURE CONTROLLER AND ADVANCED DIAGNOSTICS TO SIMPLIFY TROUBLESHOOTING

OUTDOOR MODEL - INCLUDES A WALL MOUNT TEMPERATURE REMOTE CONTROLLER AND ADVANCED DIAGNOSTICS TO SIMPLIFY TROUBLESHOOTING

FACTORY-INSTALLED POWER CORD INCLUDED FOR INDOOR MODELS

COMPLIES WITH LEAD FREE STANDARDS

SAFETY FEATURES:

- Air-Fuel Ratio (AFR) Sensor
- Exhaust & Water Temperature Safety Control
- Overheat Cut-Off Fuse

INTERNAL FREEZE PROTECTION SYSTEM

POWER DIRECT VENT DESIGN

- Exhaust, 3" PVC Venting up to 70 feet or 4" PVC Venting up to 100 feet
- Provides flexible venting with PVC, CPVC, or ABS Pipe for Intake and Exhaust (solid core only).
- Category IV Stainless Steel venting can also be used

ACCESSORIES

- Pipe Cover
- Neutralizer Kit
- Isolation Valve Kits
- Concentric Termination
- Recess Box

WARRANTY

- 15-year limited warranty on heat exchanger in residential applications
- 5-year limited warranty on heat exchanger in commercial applications
- 5-year limited warranty on all parts

INDOOR MODEL

ATI-140H-N



OUTDOOR MODEL

ATO-140H-N



ANSI Z21.10.3 CSA 4.3



COMMERCIAL-GRADE RESIDENTIAL GAS WATER HEATERS

Model Number	Type	Gas Consumption Input		Inlet Gas Pressure		UEF	Maximum GPM*	Hot/Cold Connections	Gas Connection	Dimensions in Inches			Approx Shipping Weight (lbs)
		Minimum BTU/H	Maximum BTU/H	Minimum W.C.	Maximum W.C.					Height	Width	Depth	
Indoor Models													
ATI-140H-N	Natural	15,000	120,000	4.0	10.5	0.90	6.6	3/4" NPT	1/2" NPT	22-7/8	13-7/8	10-13/16	54
ATI-140H-P	Propane	13,000	120,000	8.0	14.0	0.90	6.6	3/4" NPT	1/2" NPT	22-7/8	13-7/8	10-13/16	54
Outdoor Models													
ATO-140H-N	Natural	15,000	120,000	4.0	10.5	0.91	6.6	3/4" NPT	1/2" NPT	22-7/8	13-7/8	10-13/16	52
ATO-140H-P	Propane	13,000	120,000	8.0	14.0	0.91	6.6	3/4" NPT	1/2" NPT	22-7/8	13-7/8	10-13/16	52

All dimensions are in inches.

15-150 psi Water Pressure. 40 psi or above is recommended for maximum flow.

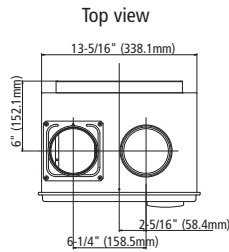
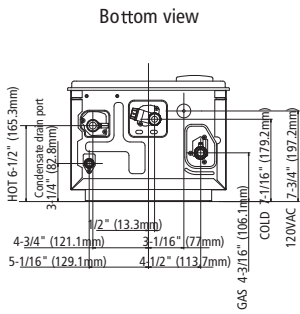
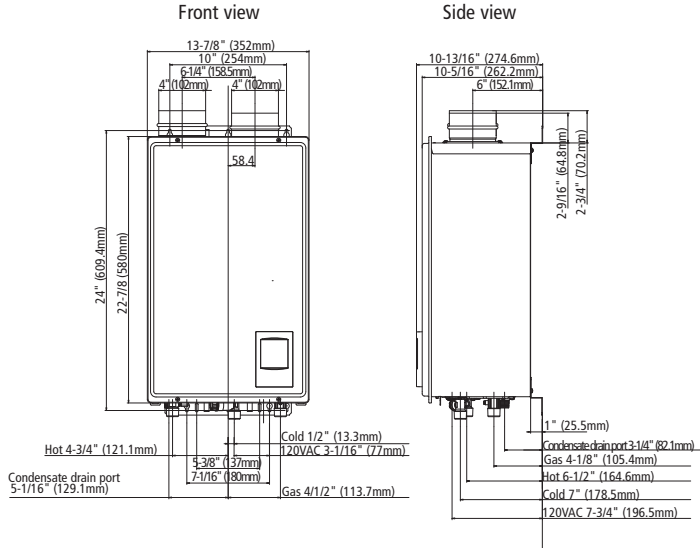
*Current numbers based on factory testing; 0.5 gpm required for activation; 0.4 gpm required for continuous fire after initial ignition.

Indoor models are certified from sea level to 10,100 ft. elevations.

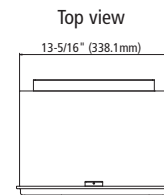
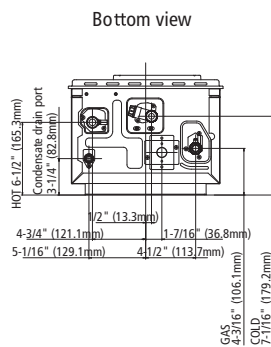
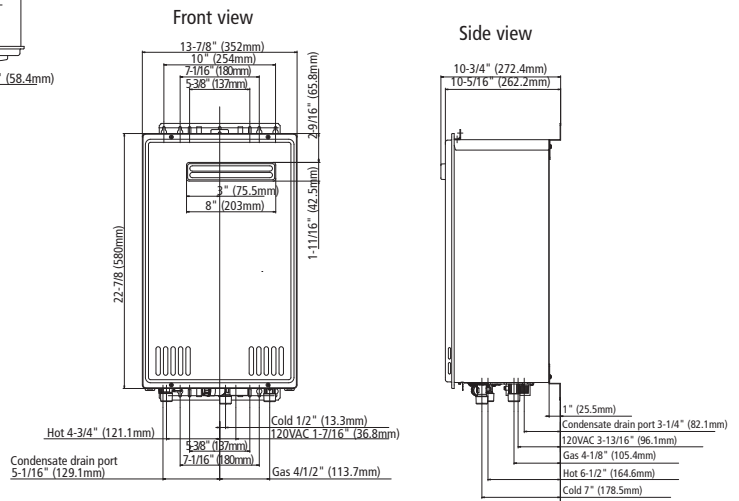
In accordance with ANSI Z21.10.3, CO emission does not exceed 400 PPM for normal input.

The manufacturer reserves the right to discontinue, or change at any time, specifications or designs without notice and without incurring obligation.

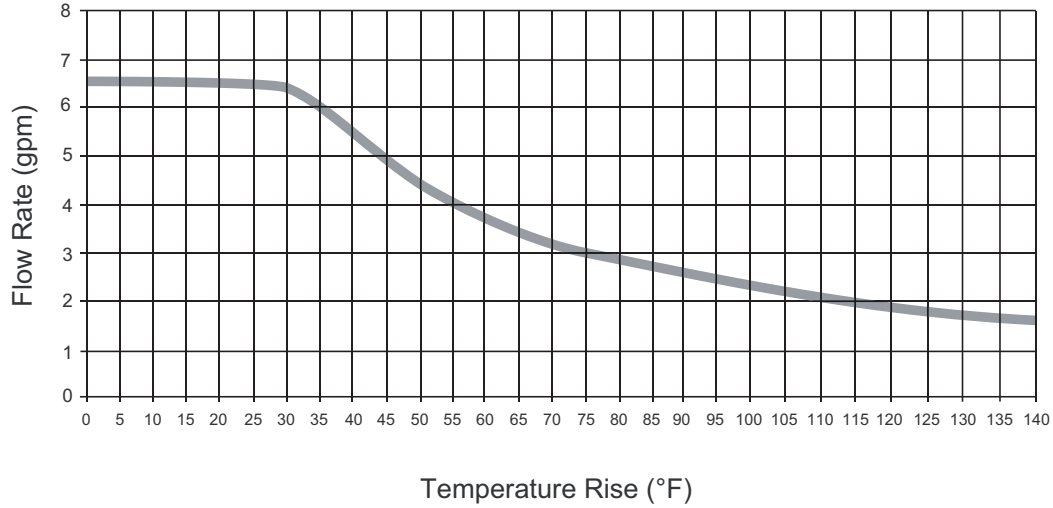
INDOOR MODEL



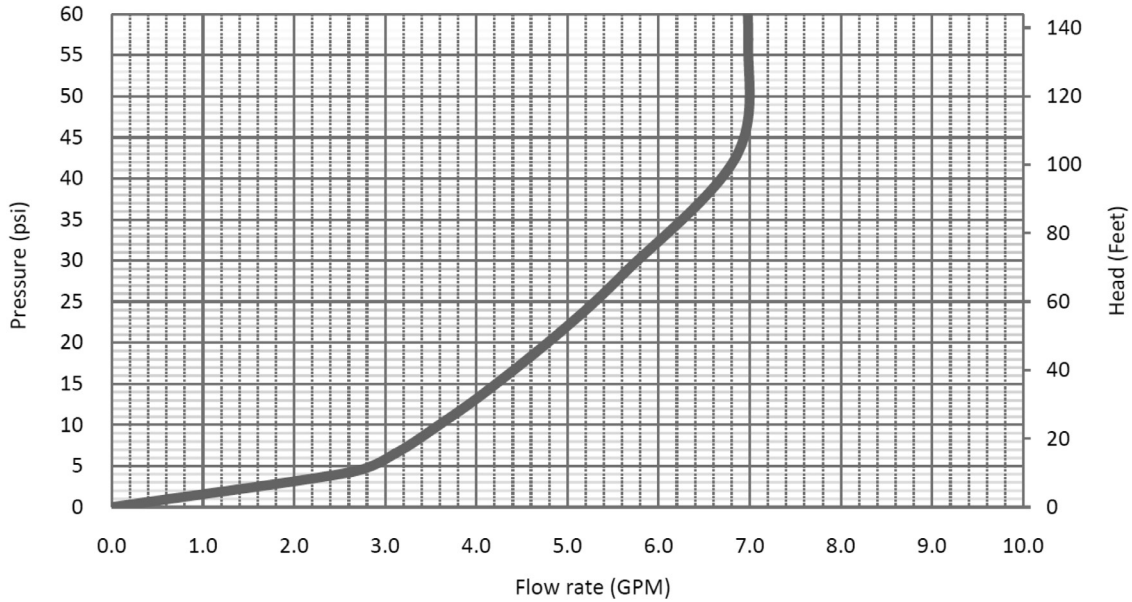
OUTDOOR MODEL



Flow Rate vs. Temperature Rise



Pressure loss



For Technical Information, call 800-527-1953. A. O. Smith Corporation reserves the right to make product changes or improvements without prior notice.