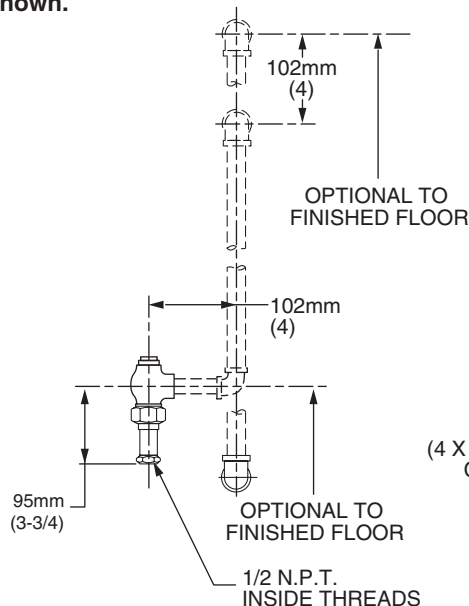


**7880.091 Shown.**

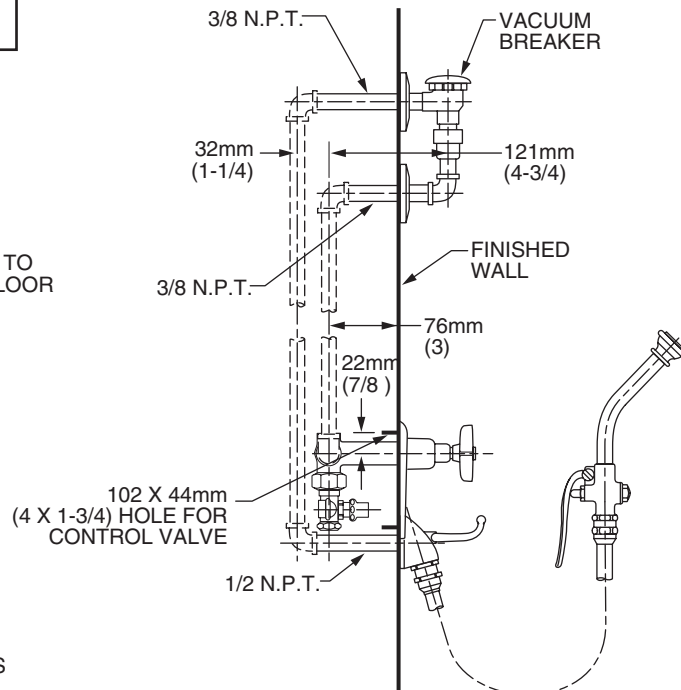


**MODEL NUMBER:**

**7880.091 Bedpan Cleanser Assembly**

Includes Component parts:

- 7837.024 Atmospheric vacuum breaker
- 7866.015 Nozzle with hook
- 7007.000 By-Pass Valve with Heritage Cross Handle and Screwdriver Stops



**GENERAL DESCRIPTION:**

Cast brass construction throughout. Single built-in by-pass valve. Amaris washerless ceramic disc valve cartridge. Heritage Cross Handles. Screwdriver stops. Single supply nozzle with built-in wall mounted hook for spray end. 4' rubber hose. 10" spray end with self-closing hand valve with renewable seats. Atmospheric vacuum breaker with top outlet to provide back flow protection.

**PRODUCT FEATURES:**

**Brass Construction:** Durable - excellent in high use applications.

**Ceramic Disc Valving:** Assures a lifetime of drip free performance.

**Supply Nozzle:** Cast brass with built-in hook to hold spray end. Wall mounted.

**Vacuum Breaker:** Brass housing, ells and nipples with re-buildable back flow preventer.

**Polished Chrome Finish:** Excellent in commercial applications.

**SUGGESTED SPECIFICATION**

Bedpan Cleanser Assembly shall feature a wall mounted single inlet supply nozzle with built-in hook. Shall feature single built-in by-pass valve with Amaris washerless ceramic disc valving and screwdriver stops. Back flow protection to be provided by vacuum breaker. Cast brass construction throughout. Fitting shall be American Standard Model# 7880.091.\_\_\_\_\_.