

ENFIELD™ COUNTERTOP SINK

- Decorative ogee rim detail round sink
- Made from vitreous china
- Self-rimming with cutout template supplied
- Center drain outlet
- Front overflow

0740.000 Round Sink less Faucet Deck

Nominal Dimensions:

419mm (16-1/2") Round

Bowl Sizes:

324mm (12-3/4") round

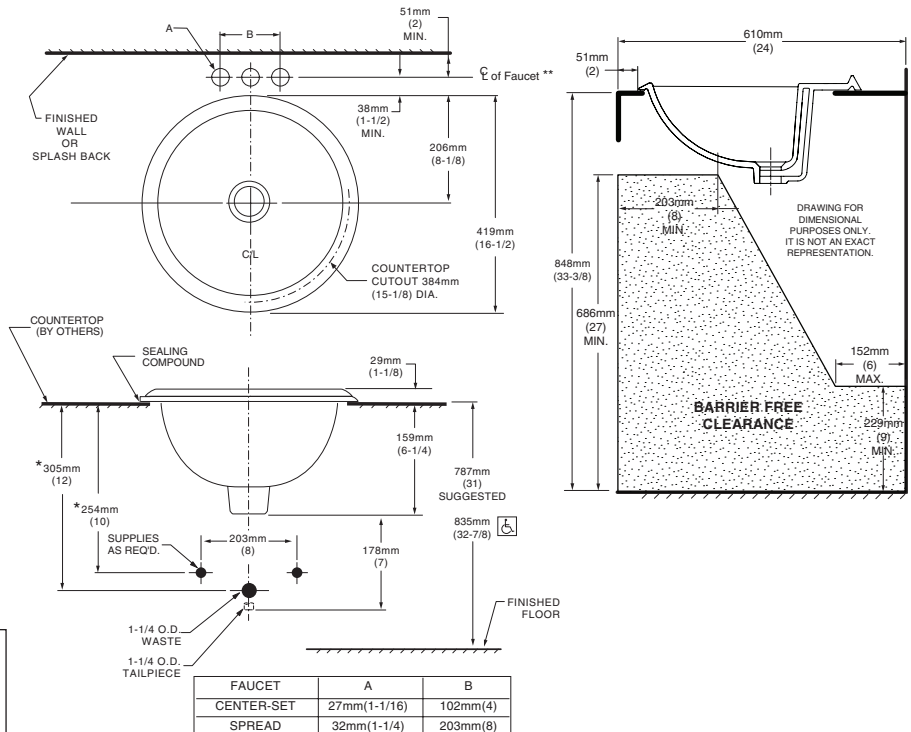
152mm (6") deep



Shown with Hampton 8" Faucet (7881732.295)

Compliance Certifications - Meets or Exceeds the Following Specifications:

- ASME A112.19.2M for Vitreous China Fixture



To Be Specified:

- Color: White Bone
 Linen Black

- Faucet*:
 Faucet Finish:
 Supplies:
 1-1/4" Trap:

* See faucet section for additional models available

MEETS THE AMERICANS WITH DISABILITIES ACT GUIDELINES AND ANSI A117.1 ACCESSIBLE AND USABLE BUILDINGS AND FACILITIES - CHECK LOCAL CODES.

Install lavatory 864mm (34") from finished floor.
Lavatory installed 51mm (2") minimum from front edge
of countertop provides 686mm (27") knee clearance area.

NOTES:

- * DIMENSIONS SHOWN FOR LOCATION OF SUPPLIES AND "P" TRAP ARE SUGGESTED.
- ** SPOUT MUST BE 4-5/8" LONG (min.) FOR ADEQUATE CLEARANCE INTO SINK
- FITTINGS NOT INCLUDED WITH FIXTURE AND MUST BE ORDERED SEPARATELY.
- FOR COUNTERTOP CUTOUT AND INSTALLATION INSTRUCTIONS USE TEMPLATE SUPPLIED WITH SINK.
- IN-FIELD ADJUSTMENT OF POP-UP ROD EXTENSION REQUIRED.
- PROVIDE A 2-1/2" SEALING COMPOUND SUPPLIED BY OTHERS.

IMPORTANT: Dimensions of fixtures are nominal and may vary within the range of tolerances established by ANSI Standard A112.19.2 These measurements are subject to change or cancellation. No responsibility is assumed for use of superseded or voided leaflet.