

# American Standard

# HAMPTON

## TWO-HANDLE BATH/SHOWER FITTING

### MODEL NUMBER:\*

☐ **7220.702 Bath/Shower Fitting**  
I.P.S. diverter spout. Porcelain Cross handles.

☐ **7221.702 Shower Only Fitting**  
I.P.S. Porcelain Cross handles.

☐ **7220.712 Bath/Shower Fitting**  
I.P.S. diverter spout. Porcelain Lever handles.

☐ **7221.712 Shower Only Fitting**  
Porcelain Lever handles.

☐ **7220.722 Bath/Shower Fitting**  
I.P.S. diverter spout. Metal Cross handles.

☐ **7221.722 Shower Only Fitting**  
Metal Cross handles.

☐ **7220.732 Bath/Shower Fitting**  
I.P.S. diverter spout. Metal Lever handles.

☐ **7221.732 Shower Only Fitting**  
Metal Lever handles.

\* See reverse for Valve Only versions.

7220.712 Shown

### GENERAL DESCRIPTION:

Cast brass valve body on 8 inch centers. 1/4 turn washerless ceramic disc valve cartridges - reversible for use with either lever or cross handles. 1/2" N.P.T. female threaded inlets and outlets. Adjustable brass showerhead with 2.5 gpm/9.5L/min. flow restrictor.

### PRODUCT FEATURES:

**Brass Construction:** Durable - Ideal for prolonged contact with water. Provides the finest surface for application of all finishes.

**Ceramic Disc Valve Cartridges:** Assures a lifetime of drip-free performance.

**Increased roughing-in:** 42mm to 86mm (1-5/8 to 3-3/8).

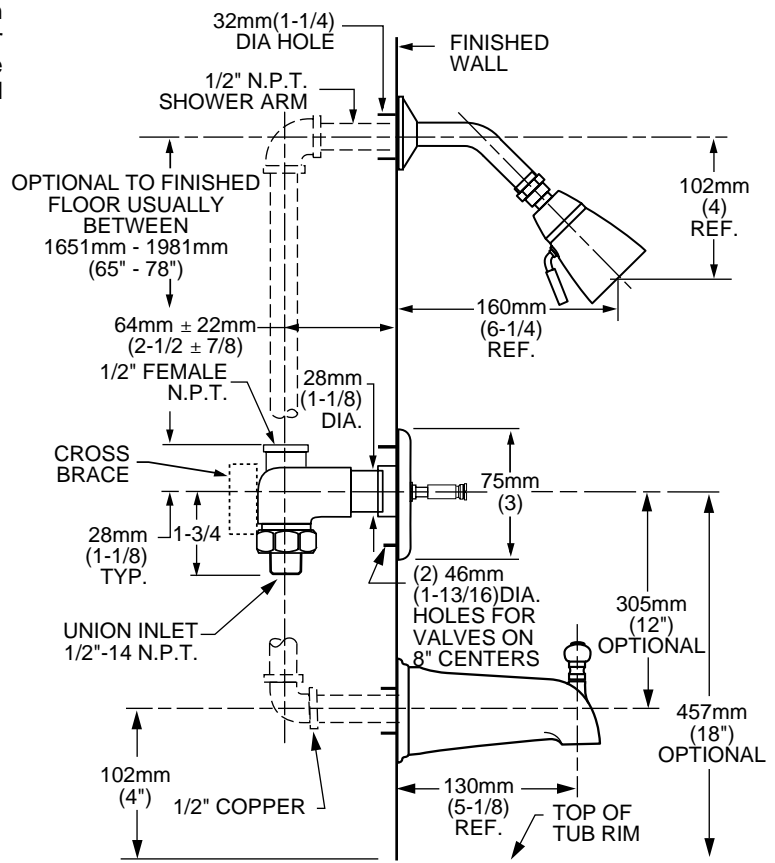
**Exclusive Valve Escutcheon Design:** 3 piece escutcheon design accommodates deep and shallow rough-ins. Provides water tight seal around valves.

**Integral Unions:** No soldering required.

**Exclusive Handle Alignment System:** Allows fine tuning of handle position.

**Choice of Finishes:** Wide range of durable finishes.

**Exclusive Plaster Guard:** Plaster guard can be used to test for leaks prior to handle installation.



### SUGGESTED SPECIFICATION:

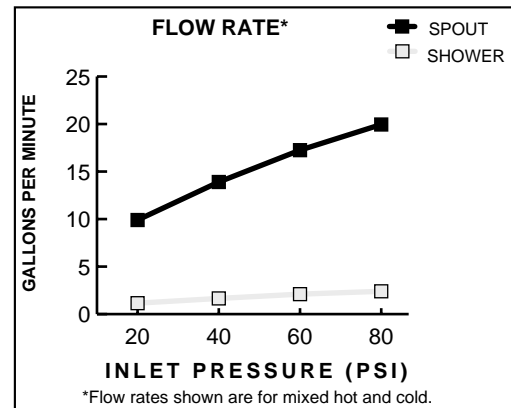
Two handle bath/shower fitting shall feature cast brass construction. Shall also feature 1/4 turn washerless ceramic disc valve cartridges that are reversible for use with cross or lever handles. Fitting shall be American Standard Model # \_\_\_\_\_.





## TWO-HANDLE BATH/SHOWER FITTING

### CODES AND STANDARDS

These products meet or exceed the following codes and standards:

**ASME A112.18.1M**  
**CSA B 125**



	Product Number	Description	Finish Options							
			Polished Chrome	PVD Polished Brass	PVD Satin/Chrome Mix	Velvet	Velvet /PVD Brass Mix	PVD Satin	PVD Satin/Brass Mix	P.Chrome /PVD Brass Mix
			002	099	221	285	287	295	297	299
	7220.702	Two handle Bath/Shower. Porcelain Cross handles.			N/A		N/A		N/A	N/A
	7221.702	Two handle Shower Only. Porcelain Cross handles.			N/A		N/A		N/A	N/A
	7222.702	Two handle Valve Only. Porcelain Cross handles.		N/A	N/A	N/A	N/A	N/A	N/A	N/A
	7220.712	Two handle Bath/Shower. Porcelain Lever handles.			N/A		N/A		N/A	N/A
	7221.712	Two handle Shower Only. Porcelain Lever handles.			N/A		N/A		N/A	N/A
	7222.712	Two handle Valve Only. Porcelain Lever handles.		N/A	N/A	N/A	N/A	N/A	N/A	N/A
	7220.722	Two handle Bath/Shower. Metal Cross handles.								
	7221.722	Two handle Shower Only. Metal Cross handles.								
	7222.722	Two handle Valve Only. Metal Cross handles.		N/A	N/A	N/A	N/A	N/A	N/A	N/A
	7220.732	Two handle Bath/Shower. Metal Lever handles.								
	7221.732	Two handle Shower Only. Metal Lever handles.								
	7222.732	Two handle Valve Only. Metal Lever handles.		N/A	N/A	N/A	N/A	N/A	N/A	N/A

**N/A = NOT AVAILABLE**



Meets the American Disabilities Act Guidelines and **ANSI A117.1** Requirements for the physically challenged.