

SILHOUETTE 25” SINGLE BOWL KITCHEN SINK

- Americast brand engineered material
- Single bowl design
- Self-rimming or undercounter installation
- Silicone sealant supplied
- Available in 1, 3 or 4 faucet hole configuration

Self-Rimming:

- 7172.001** Center hole only
- 7172.803** 3 hole
- 7172.804** 4 hole

Undercounter Installation:

- 791326-100** Mounting Kit (consists of cut-out templates and mounting kits)

NOTE: For undercounter installation order self-rimming model with desired hole punchings along with 791326-100 Mounting Kit.

Nominal Dimensions: 635 x 559 x 241mm
(25" x 22" x 9-1/2")

Bowl sizes:

552mm (21-3/4") wide, 476mm (18-3/4") front to back 229mm (9") deep

To Be Specified

- Color:
- Faucet*:
- Faucet Finish:
- Basket Strainer: 4331.013
- Soap Dispenser: 4503.115, Color:
- Trap:

See Pgs. KSS-05B & 05C for Colors and information on the following items:

- Coated Wire Utility Basket: 7346.100, Color:
- Wood Cutting Board: 9000.250
- Colander for Cutting Board: 8102.100, Color:
- Large Colander: 8103.100, Color:

* See faucet section for additional models available



Self-Rimming Model (faucet not included)



Undercounter Mount

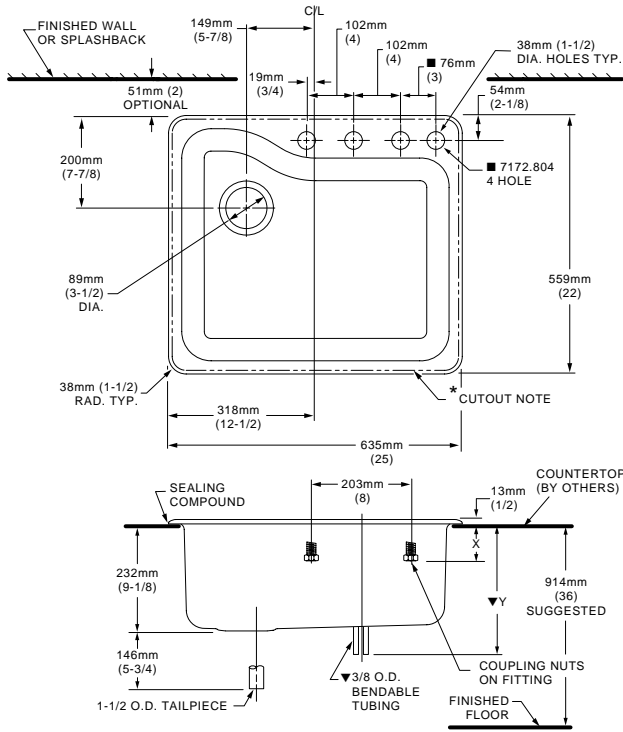
Compliance Certifications -

Meets or Exceeds the Following Specifications:

- ASME A112.19.4M for Americast Plumbing Fixtures
- ASTM E162 for Flammability
- NFPA 258 for Smoke Density

7172.803/804

7172.823/824



FAUCET	7172.803	7172.804	X	Y▼
CERAMIX	2021.700	2021.741	—	327mm(12-7/8)
RELIANT	4205.241	4205.217	—	254mm(10)
HERITAGE AMARILIS	TOP MOUNT 6270.000	6279.000	44mm(1-3/4)	—
	BOTTOM MOUNT 7270.SER.	7271.SER.	95mm(3-3/4)	—

NOTES:

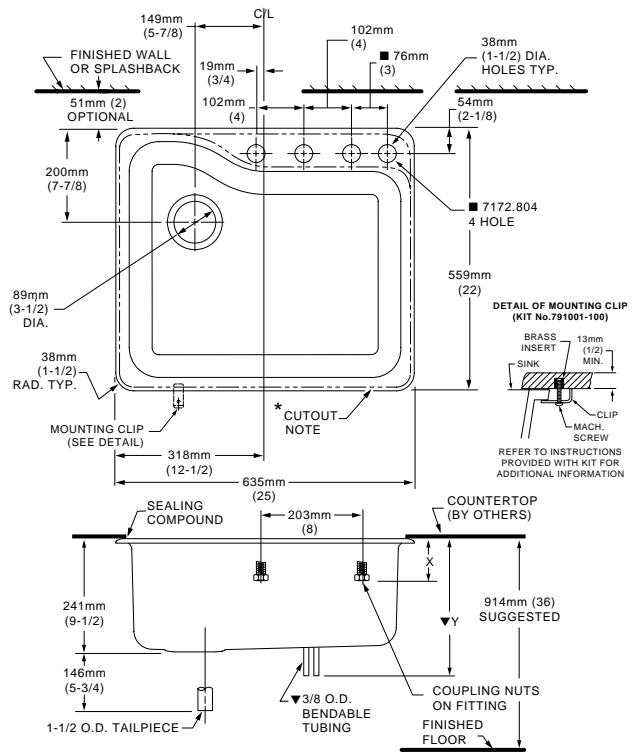
* **SELF-RIMMING (7172.803/4):** COUNTERTOP CUTOUT 603 x 527mm WITH 25mm RADIUS (23-3/4 X 20-3/4 WITH 1" RAD.) AT CORNERS.

■ **ON FOUR HOLE VERSIONS, SPACING BETWEEN FAR RIGHT HOLES IS 3".** FITTINGS NOT INCLUDED AND MUST BE ORDERED SEPARATELY. PROVIDE SUITABLE REINFORCEMENT FOR ALL WALL AND COUNTERTOP SUPPORTS.

IMPORTANT: Dimensions of fixtures are nominal and may vary within the range of tolerances established by ANSI Standard A112.19.4

These measurements are subject to change or cancellation. No responsibility is assumed for use of superseded or voided leaflet.

Undercounter Mount



FAUCET	7172.803	7172.804	X	Y▼
CERAMIX	2021.700	2021.741	—	327mm(12-7/8)
RELIANT	4205.241	4205.217	—	254mm(10)
HERITAGE AMARILIS	TOP MOUNT 6270.100	6279.100	44mm(1-3/4)	—
	BOTTOM MOUNT 7270.SER.	7271.SER.	95mm(3-3/4)	—

NOTES:

* **TEMPLATE PROVIDED WITH MOUNTING KIT 791326-100 FOR EXPOSED FAUCET DECK OR UNDERCOUNTER FAUCET DECK COUNTERTOP CUTOUT VARIATIONS.**

■ **ON FOUR HOLE VERSIONS, SPACING BETWEEN FAR RIGHT HOLES IS 3".** FITTINGS AND UNDERCOUNTER MOUNTING KIT NOT INCLUDED AND MUST BE ORDERED SEPARATELY. PROVIDE SUITABLE REINFORCEMENT FOR ALL WALL AND COUNTERTOP SUPPORTS.

IMPORTANT: Dimensions of fixtures are nominal and may vary within the range of tolerances established by ANSI Standard A112.19.4

These measurements are subject to change or cancellation. No responsibility is assumed for use of superseded or voided leaflet.

SILHOUETTE 25" SINGLE BOWL KITCHEN SINK

- Americast brand engineered material
- Single bowl design
- Tile edge installation
- Silicone sealant supplied
- Available in 1, 3 or 4 faucet hole configuration

Tile Edge:

- 7172.011** Center hole only
- 7172.813** 3 hole
- 7172.814** 4 hole

Nominal Dimensions: 635 x 559 x 241mm
(25" x 22" x 9-1/2")

Bowl sizes:

552mm (21-3/4") wide, 476mm (18-3/4") front to
back 229mm (9") deep

Compliance Certifications -

Meets or Exceeds the Following Specifications:

- ASME A112.19.4M for Americast Plumbing Fixtures
- ASTM E162 for Flammability
- NFPA 258 for Smoke Density



To Be Specified

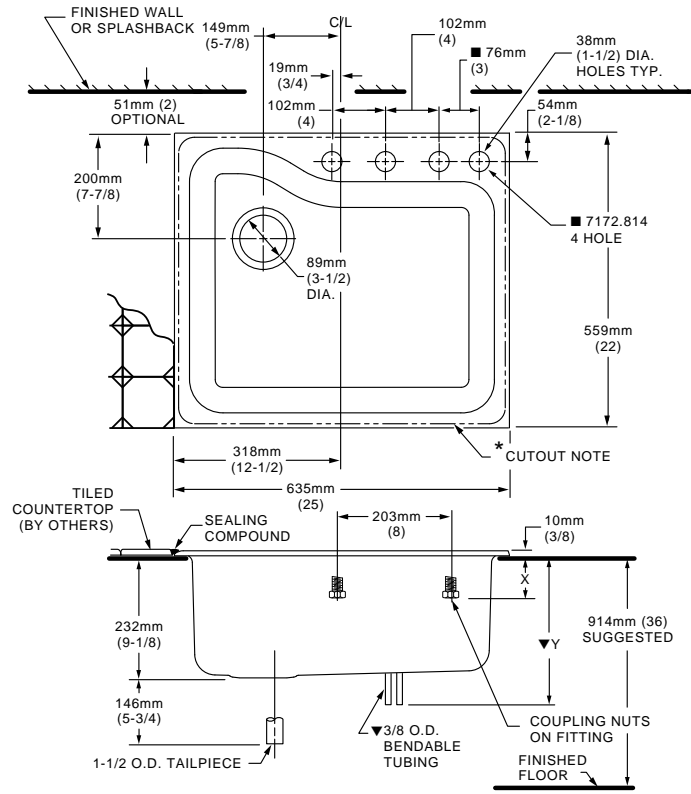
- Color:
- Faucet*:
- Faucet Finish:
- Basket Strainer: 4331.013
- Soap Dispenser: 4503.115, Color:
- Trap:

See Pgs. KSS-05B & 05C for Colors and information
on the following items:

- Coated Wire Utility Basket: 7346.100, Color:
- Wood Cutting Board: 9000.250
- Colander for Cutting Board: 8102.100, Color:
- Large Colander: 8103.100, Color:

* See faucet section for additional models available

7172.813/814



FAUCET	7172.813	7172.814	X	Y▼
CERAMIX	2021.700	2021.741	—	327mm(12-7/8)
RELIANT	4205.241	4205.217	—	254mm(10)
HERITAGE	6270.000	6279.000	44mm(1-3/4)	—
AMARILIS	7270.SER.	7271.SER.	95mm(3-3/4)	—

NOTES:

* COUNTERTOP CUTOUT 603mm x 527mm WITH 25mm RADIUS (23-3/4 X 20-3/4 WITH 1” RADIUS) AT CORNERS.

■ ON FOUR HOLE VERSIONS, SPACING BETWEEN FAR RIGHT HOLES IS 3”.

FITTINGS NOT INCLUDED AND MUST BE ORDERED SEPARATELY.

PROVIDE SUITABLE REINFORCEMENT FOR ALL WALL AND COUNTERTOP SUPPORTS.

IMPORTANT: Dimensions of fixtures are nominal and may vary within the range of tolerances established by ANSI Standard A112.19.4

These measurements are subject to change or cancellation. No responsibility is assumed for use of superseded or voided leaflet.

**SILHOUETTE 25" DECORATED SINGLE BOWL
KITCHEN SINK**

- Americast® brand engineered material
- Single bowl design
- Choice of two distinctive patterns fired into porcelain surface (available on White and Bone only)
- Self-rimming, undercounter or tile-edge installation
- Silicone sealant supplied
- Available in 1, 3 or 4 faucet hole configuration

Self-Rimming (Fruit Decoration):

- 7172.001W** Center hole only
- 7172.803W** 3 hole
- 7172.804W** 4 hole

Self-Rimming (Ivy Decoration [shown]):

- 7172.001V** Center hole only
- 7172.803V** 3 hole
- 7172.804V** 4 hole

Tile Edge (Fruit Decoration):

- 7172.011W** CHO
- 7172.813W** 3 hole
- 7172.814W** 4 hole

Tile Edge (Ivy Decoration):

- 7172.011V** CHO
- 7172.813V** 3 hole
- 7172.814V** 4 hole

Under Counter Installation:

- 791326-100** Mounting Kit (consists of cut-out templates and mounting clips)

Nominal Dimensions: 635 x 559 x 241mm
(25" x 22" x 9-1/2")

Bowl sizes:

552mm (21-3/4") wide, 476mm (18-3/4") front to back 229mm (9") deep

Roughing-in information on reverse

NOTE: For undercounter installation order self-rimming model with desired hole punchings along with 791326-100 Mounting Kit.



Shown with 7231.000 Heritage Kitchen Faucet with Spray and Cross handles (not included)

Compliance Certifications -

Meets or Exceeds the Following Specifications:

- ASME A112.19.4M for Americast Plumbing Fixtures
- ASTM E162 for Flammability
- NFPA 258 for Smoke Density

To Be Specified

- Color: White Heat Bone
- Faucet*:
- Faucet Finish:
- Basket Strainer: 4331.013
- Soap Dispenser: 4503.115, Color:
- Trap:

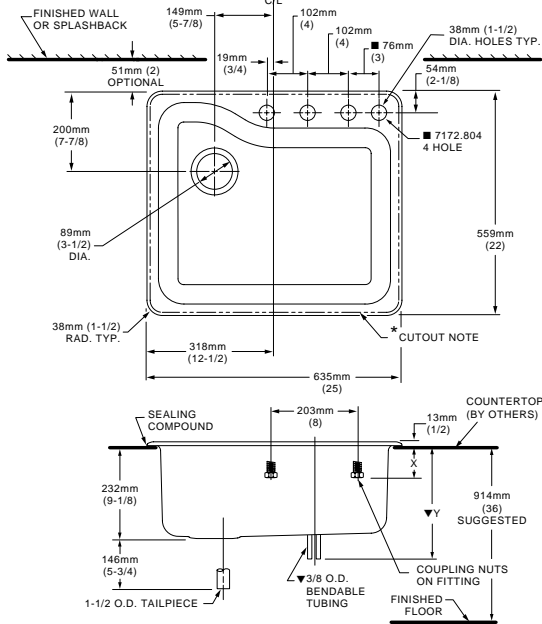
See Pgs. KSS-05B & 05C for Colors and information on the following items:

- Coated Wire Utility Basket: 7346.100, Color:
- Wood Cutting Board: 9000.250
- Colander for Cutting Board: 8102.100, Color:
- Large Colander: 8103.100, Color:

* See faucet section for additional models available

7172.803/804 7172.823/824

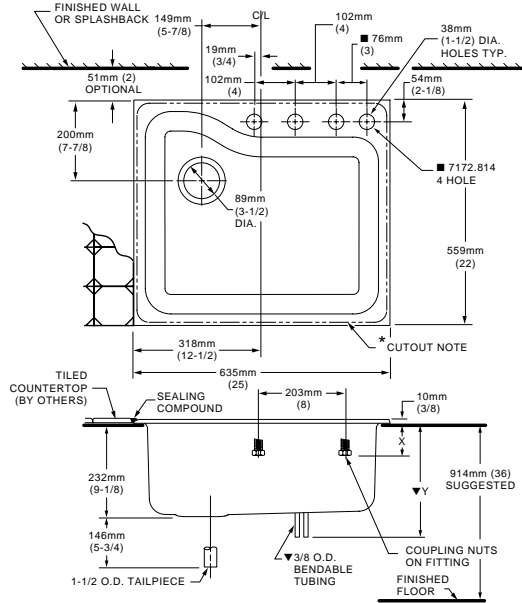
7172.813/814 Tile Edge



FAUCET	7172.803	7172.804	X	Y▼
CERAMIX	2021.700	2021.741	—	327mm(12-7/8)
RELIANT	4205.241	4205.217	—	254mm(10)
HERITAGE TOP MOUNT	6270.000	6279.000	44mm(1-3/4)	—
AMARILIS BOTTOM MOUNT	7270.SER.	7271.SER.	95mm(3-3/4)	—

NOTES:

- * **SELF-RIMMING (7172.803/4):** COUNTERTOP CUTOUT 603 x 527mm WITH 25mm RADIUS (23-3/4 X 20-3/4 WITH 1” RAD.) AT CORNERS.
- **ON FOUR HOLE VERSIONS, SPACING BETWEEN FAR RIGHT HOLES IS 3”.**
- FITTINGS NOT INCLUDED AND MUST BE ORDERED SEPARATELY. PROVIDE SUITABLE REINFORCEMENT FOR ALL WALL AND COUNTERTOP SUPPORTS.



FAUCET	7172.813	7172.814	X	Y▼
CERAMIX	2021.700	2021.741	—	327mm(12-7/8)
RELIANT	4205.241	4205.217	—	254mm(10)
HERITAGE TOP MOUNT	6270.000	6279.000	44mm(1-3/4)	—
AMARILIS BOTTOM MOUNT	7270.SER.	7271.SER.	95mm(3-3/4)	—

NOTES:

- * **COUNTERTOP CUTOUT 603mm x 527mm WITH 25mm RADIUS (23-3/4 X 20-3/4 WITH 1” RADIUS) AT CORNERS.**
- **ON FOUR HOLE VERSIONS, SPACING BETWEEN FAR RIGHT HOLES IS 3”.**
- FITTINGS NOT INCLUDED AND MUST BE ORDERED SEPARATELY. PROVIDE SUITABLE REINFORCEMENT FOR ALL WALL AND COUNTERTOP SUPPORTS.

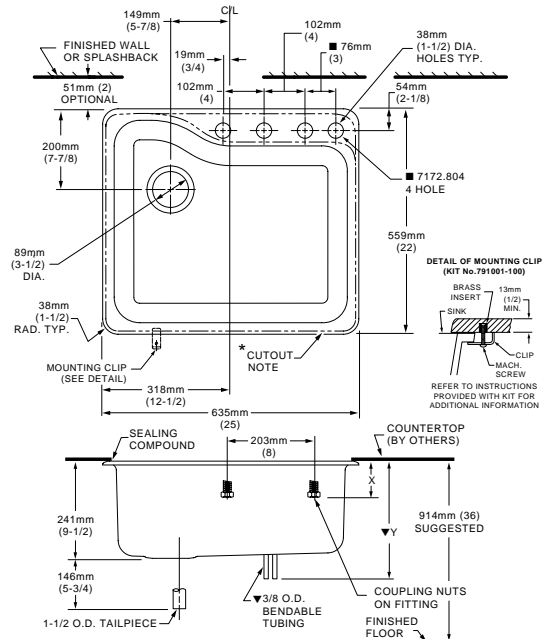
IMPORTANT: Dimensions of fixtures are nominal and may vary within the range of tolerances established by ANSI Standard A112.19.4 These measurements are subject to change or cancellation. No responsibility is assumed for use of superseded or voided leaflet.

Americast® Brand engineered material is a composition of porcelain bonded to enameling grade metal, bonded to a patented structural composite.

NOTES:

- * **TEMPLATE PROVIDED WITH MOUNTING KIT 791326-100 FOR EXPOSED FAUCET DECK OR UNDERCOUNTER FAUCET DECK COUNTERTOP CUTOUT VARIATIONS.**
- **ON FOUR HOLE VERSIONS, SPACING BETWEEN FAR RIGHT HOLES IS 3”.**
- FITTINGS AND UNDERCOUNTER MOUNTING KIT NOT INCLUDED AND MUST BE ORDERED SEPARATELY. PROVIDE SUITABLE REINFORCEMENT FOR ALL WALL AND COUNTERTOP SUPPORTS.

7172.803/804 Undercounter Mount



FAUCET	7172.803	7172.804	X	Y▼
CERAMIX	2021.700	2021.741	—	327mm(12-7/8)
RELIANT	4205.241	4205.217	—	254mm(10)
HERITAGE TOP MOUNT	6270.100	6279.100	44mm(1-3/4)	—
AMARILIS BOTTOM MOUNT	7270.SER.	7271.SER.	95mm(3-3/4)	—