

SILHOUETTE 33” DOUBLE BOWL KITCHEN SINK

- Americast brand engineered material
- Double bowl design
- Self-rimming or undercounter installation
- Silicone sealant supplied
- Available in 1, 3, 4, or 5 faucet hole configuration

Self-Rimming:

- 7145.001** Center hole only
- 7145.803** 3 hole
- 7145.804** 4 hole
- 7145.805** 5 hole

Undercounter Installation:

- 791326-100** Mounting Kit (consists of cut-out templates and mounting kits)

NOTE: For undercounter installation order self-rimming model with desired hole punchings along with 791326-100 Mounting Kit.

Nominal Dimensions: 838 x 559 x 241mm
(33" x 22" x 9-1/2")

Bowl sizes:

Right Hand: 359mm (14-1/8") wide, 413mm (16-1/4") front to back 229mm (9") deep
Left Hand: 359mm (14-1/8") wide, 476mm (18-3/4") front to back 229mm (9") deep



Self-Rimming model (faucet & soap dispenser not included)



Undercounter Installation (faucet not included)

To Be Specified

- Color:
- Faucet*:
- Faucet Finish:
- Basket Strainer: 4331.013
- Soap Dispenser: 4503.115, Color:
- Traps:

See Pgs. KSS-05B & 05C for Colors and information on the following items:

- Coated Wire Utility Basket: 7346.100, Color:
- Wood Cutting Board: 9000.250
- Colander for Cutting Board: 8102.100, Color:
- Large Colander: 8103.100, Color:
- Deep Web Colander: 8105.100, Color:
- Shallow Web Colander: 8104.100, Color:
- Web Cover: 8106.100, Color:

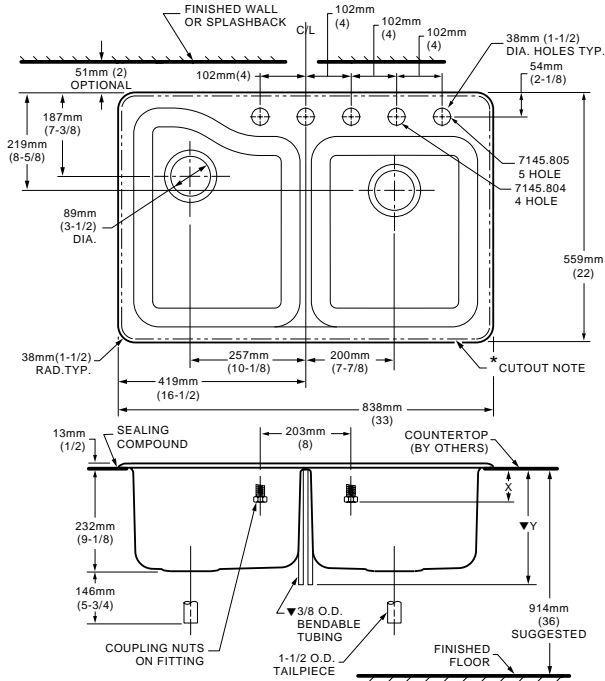
Compliance Certifications -

Meets or Exceeds the Following Specifications:

- ASME A112.19.4M for Americast Plumbing Fixtures
- ASTM E162 for Flammability
- NFPA 258 for Smoke Density

* See faucet section for additional models available

7145.803/804/805

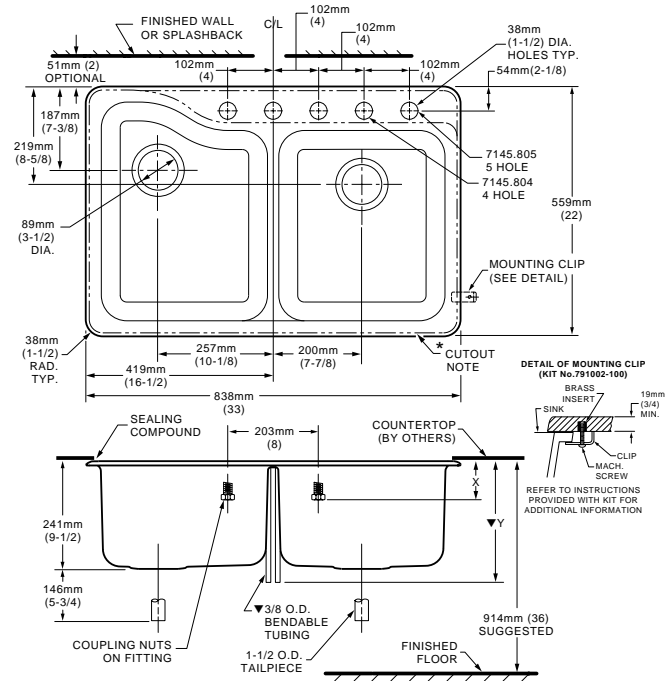


FAUCET	7145.803	7145.804	X	Y
CERAMIX	2021.700	2021.741	—	327mm(12-7/8)
RELIANT	4205.241	4205.217	—	254mm(10)
HERITAGE AMARILIS	TOP MOUNT 6270.000	6279.000	44mm(1-3/4)	—
	BOTTOM MOUNT 7270.SER.	7271.SER.	95mm(3-3/4)	—

NOTES:
 * TEMPLATE PROVIDED WITH MOUNTING KIT 791326-100 FOR EXPOSED FAUCET DECK OR UNDERCOUNTER FAUCET DECK COUNTERTOP CUTOUT VARIATIONS. FITTINGS AND UNDERCOUNTER MOUNTING KIT NOT INCLUDED AND MUST BE ORDERED SEPARATELY. PROVIDE SUITABLE REINFORCEMENT FOR ALL WALL AND COUNTERTOP SUPPORTS.

NOTES:
 * **SELF-RIMMING (7145.803/4/5):** COUNTERTOP CUTOUT 806 X 527MM WITH 25MM RADIUS (31-3/4 X 20-3/4 WITH 1" RAD.) AT CORNERS. FITTINGS NOT INCLUDED AND MUST BE ORDERED SEPARATELY. PROVIDE SUITABLE REINFORCEMENT FOR ALL WALL AND COUNTERTOP SUPPORTS.
 IMPORTANT: Dimensions of fixtures are nominal and may vary within the range of tolerances established by ANSI Standard A112.19.4. These measurements are subject to change or cancellation. No responsibility is assumed for use of superseded or voided leaflet.

Undercounter Mount



FAUCET	7145.803	7145.804	X	Y
CERAMIX	2021.700	2021.741	—	327mm(12-7/8)
RELIANT	4205.241	4205.217	—	254mm(10)
HERITAGE AMARILIS	TOP MOUNT 6270.000	6279.000	44mm(1-3/4)	—
	BOTTOM MOUNT 7270.SER.	7271.SER.	95mm(3-3/4)	—

SILHOUETTE 33" DOUBLE BOWL KITCHEN SINK

- Americast brand engineered material
- Double bowl design
- Tile edge installation
- Silicone sealant supplied
- Available in 1, 3, 4, or 5 faucet hole configuration

Tile Edge:

- 7145.011** Center hole only
- 7145.813** 3 hole
- 7145.814** 4 hole
- 7145.815** 5 hole

Nominal Dimensions: 810 x 530 x 241mm
(31-7/8" x 20-7/8" x 9-1/2")

Bowl sizes:

Right Hand: 359mm (14-1/8") wide, 413mm
(16-1/4") front to back 229mm (9") deep
Left Hand: 359mm (14-1/8") wide, 476mm
(18-3/4") front to back 229mm (9") deep

Compliance Certifications -

Meets or Exceeds the Following Specifications:

- ASME A112.19.4M for Americast Plumbing Fixtures
- ASTM E162 for Flammability
- NFPA 258 for Smoke Density



To Be Specified

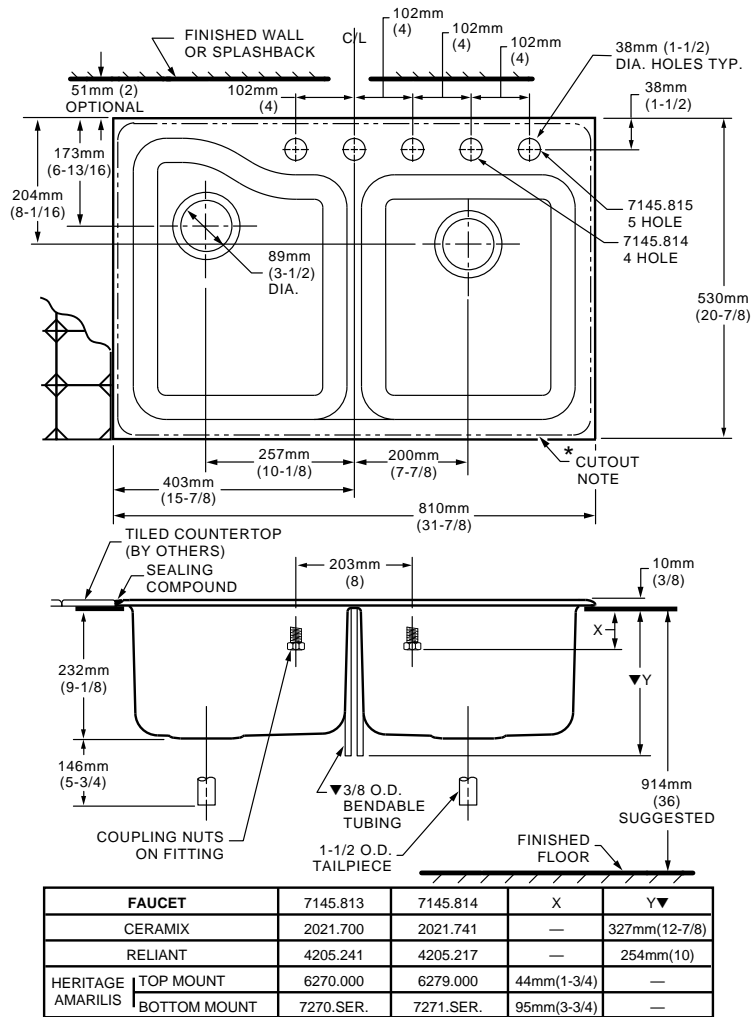
- Color:
- Faucet*:
- Faucet Finish:
- Basket Strainer: 4331.013
- Soap Dispenser: 4503.115, Color:
- Traps:

See Pgs. KSS-05B & 05C for Colors and information on the following items:

- Coated Wire Utility Basket: 7346.100, Color:
- Wood Cutting Board: 9000.250
- Colander for Cutting Board: 8102.100, Color:
- Large Colander: 8103.100, Color:
- Deep Web Colander: 8105.100, Color:
- Shallow Web Colander: 8104.100, Color:
- Web Cover: 8106.100, Color:

* See faucet section for additional models available

7145.813/814/815



NOTES:
 * COUNTERTOP CUTOUT 778 x 498mm WITH 25mm RADIUS (30-5/8 X 19-5/8 WITH 1” RADIUS) AT CORNERS.
 FITTINGS NOT INCLUDED AND MUST BE ORDERED SEPARATELY.
 PROVIDE SUITABLE REINFORCEMENT FOR ALL WALL AND COUNTERTOP SUPPORTS.
 IMPORTANT: Dimensions of fixtures are nominal and may vary within the range of tolerances established by ANSI Standard A112.19.4
 These measurements are subject to change or cancellation. No responsibility is assumed for use of superseded or voided leaflet.

**SILHOUETTE 33” DECORATED DOUBLE BOWL
KITCHEN SINK**

- Americast® brand engineered material
- Double bowl design
- Choice of two distinctive patterns fired into porcelain surface (available on White and Bone only)
- Self-rimming, undercounter or tile-edge installation
- Silicone sealant supplied
- Available in 1, 3, 4, or 5 faucet hole configuration

**Self-Rimming with
Fruit Decoration:**

- 7145.001W CHO
- 7145.803W 3 hole
- 7145.804W 4 hole
- 7145.805W 5 hole

**Self-Rimming with
Ivy Decoration:**

- 7145.001V CHO
- 7145.803V 3 hole
- 7145.804V 4 hole
- 7145.805V 5 hole

Nominal Dimensions: 838 x 559 x 241mm
(33" x 22" x 9-1/2")

**Tile Edge with
Fruit Decoration:**

- 7145.011W CHO
- 7145.813W 3 hole
- 7145.814W 4 hole
- 7145.815W 5 hole

**Tile-Edge with
Ivy Decoration:**

- 7145.011V CHO
- 7145.813V 3 hole
- 7145.814V 4 hole
- 7145.815V 5 hole

Nominal Dimensions: 810 x 530 x 241mm
(31-7/8" x 20-7/8" x 9-1/2")

**Compliance Certifications -
Meets or Exceeds the Following Specifications:**

- ASME A112.19.4M for Americast Plumbing Fixtures
- ASTM E162 for Flammability
- NFPA 258 for Smoke Density



Self-Rimming Model (faucet not included)

Bowl sizes:

Right Hand: 359mm (14-1/8") wide, 413mm
(16-1/4") front to back 229mm (9") deep

Left Hand: 359mm (14-1/8") wide, 476mm
(18-3/4") front to back 229mm (9") deep

Under Counter Installation:

- 791326-100 Mounting Kit (consists of cut-out templates and mounting clips)

NOTE: For undercounter installation order self-rimming model with desired hole punchings along with 791326-100 Mounting Kit.

To Be Specified

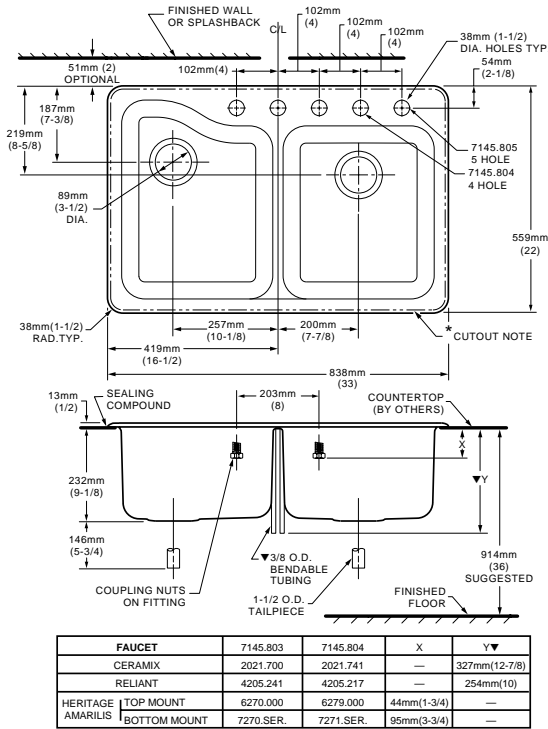
- Color: White Heat Bone
- Faucet*:
- Faucet Finish:
- Basket Strainer: 4331.013
- Soap Dispenser: 4503.115, Color:
- Traps:

See Pgs. KSS-05B & 05C for Colors and information on the following items:

- Coated Wire Utility Basket: 7346.100, Color:
- Wood Cutting Board: 9000.250
- Colander for Cutting Board: 8102.100, Color:
- Large Colander: 8103.100, Color:
- Deep Web Colander: 8105.100, Color:
- Shallow Web Colander: 8104.100, Color:
- Web Cover: 8106.100, Color:

* See faucet section for additional models available

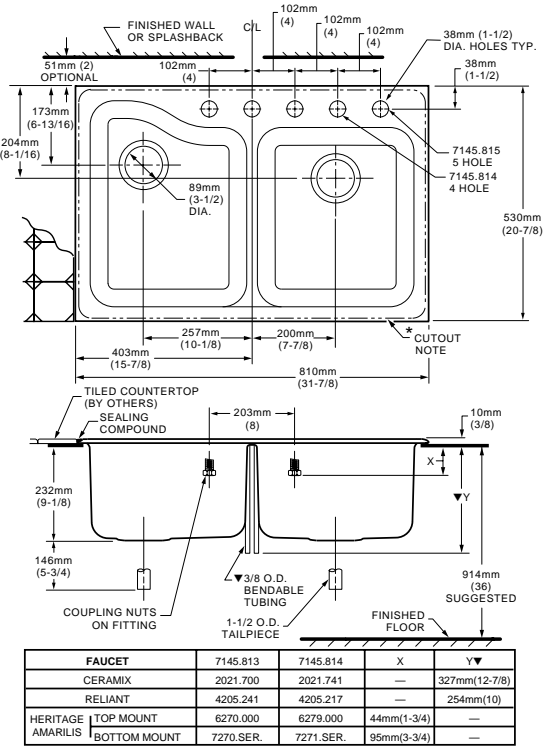
7145.803/804/805



NOTES:

* **SELF-RIMMING (7145.803/4/5):** COUNTERTOP CUTOUT 806 X 527MM WITH 25MM RADIUS (31-3/4 X 20-3/4 WITH 1" RAD.) AT CORNERS. FITTINGS NOT INCLUDED AND MUST BE ORDERED SEPARATELY. PROVIDE SUITABLE REINFORCEMENT FOR ALL WALL AND COUNTER-TOP SUPPORTS.

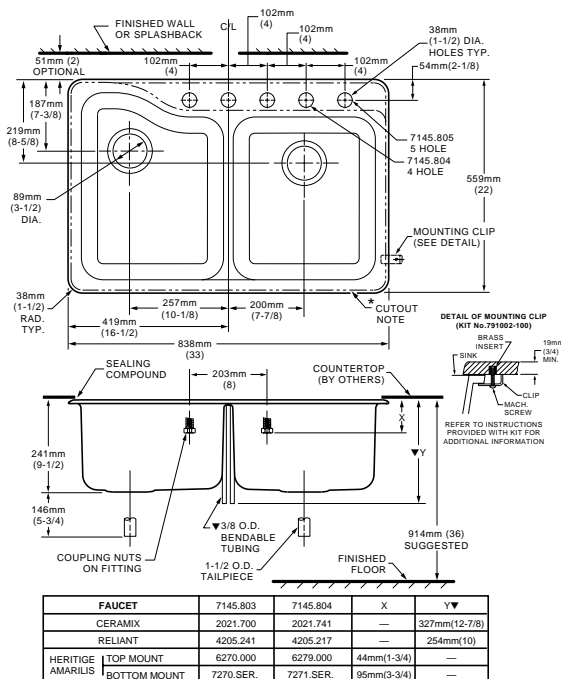
7145.813/814/815 Tile Edge



NOTES:

* **COUNTERTOP CUTOUT 778 x 498mm** WITH 25mm RADIUS (30-5/8 X 19-5/8 WITH 1" RADIUS) AT CORNERS. FITTINGS NOT INCLUDED AND MUST BE ORDERED SEPARATELY. PROVIDE SUITABLE REINFORCEMENT FOR ALL WALL AND COUNTER-TOP SUPPORTS.

7145.803/804/805 Undercounter



NOTES:

* **TEMPLATE PROVIDED WITH MOUNTING KIT 791326-100** FOR EXPOSED FAUCET DECK OR UNDERCOUNTER FAUCET DECK COUNTERTOP CUTOUT VARIATIONS. FITTINGS AND UNDERCOUNTER MOUNTING KIT NOT INCLUDED AND MUST BE ORDERED SEPARATELY. PROVIDE SUITABLE REINFORCEMENT FOR ALL WALL AND COUNTER-TOP SUPPORTS.

Americast® Brand engineered material is a composition of porcelain bonded to enameling grade metal, bonded to a patented structural composite.

IMPORTANT: Dimensions of fixtures are nominal and may vary within the range of tolerances established by ANSI Standard A112.19.4 These measurements are subject to change or cancellation. No responsibility is assumed for use of superseded or voided leaflet.