

# Installation Instructions

## SELECTRONIC™ Innsbrook™ 0.5 GPF urinal 6520Series



Unpacking	1
Rough-in, Tools, Materials	2
Urinal Installation	2-3
Electrical Hook-up	4-5
Maintenance	6-7
FAQ,s	7
Replacement Parts	8
Programming	9
Trouble Shooting Guide	10
Warranty	11

Certified to comply with AMSE A112.19.2M  
© 2006 American Standard

730795-100 Rev.D

*American Standard*

**NOTE TO INSTALLER:** Please give this manual to the customer after installation.

To learn more about American Standard Faucets visit our website at: [www.us.amstd.com](http://www.us.amstd.com) or U.S. customers e-mail us at: [faucetsupport@amstd.com](mailto:faucetsupport@amstd.com)

For Parts, Service, Warranty or other Assistance,

please call **1-800-442-1902 (In Canada: 1-800-387-0369)**

(In Toronto Area only: 1-905-3061093)

Thank you for selecting American-Standard...the benchmark of fine quality for over 100 years. To ensure that your installation proceeds smoothly--please read these instructions carefully before you begin.

## UNPACKING

All American Standard Faucets Are Water Tested At Our Factory. Some Residual Water May Remain In The Faucet During Shipping.

1. Remove the Urinal and loose items from the carton. The illustration below shows the Urinal and all loose items after they have been removed from the carton. Some items may be packaged partially assembled to other items.



**CAUTION: PRODUCT IS FRAGILE AND HEAVY!  
TO AVOID BREAKAGE AND POSSIBLE INJURY HANDLE WITH CARE!**

- |  |  |
|--|--|
| 1. Chinaware Urinal  | 5. Battery (6520.001 Only)/Multi-Board (6520.003 only) |
| 2. Chinaware Cover   | 6. Flexible Hose                                       |
| 3. Outlet Connection                                       | 7. Cover Mounting Kit                                  |
| 4. Battery Box (6520.001 Only) / Multi Box (6520.003 Only) | 8. 8ft. Extension Wire (6520.003 Only)                 |
|  | 9. K-2 Hangers   |

PRODUCT No. 6520.001	PRODUCT No. 6520.003
<p>Diagram of urinal 6520.001 showing callouts: 1 (Urinal), 2 (Cover), 3 (Outlet Connection), 6 (Flexible Hose), 7 (Cover Mounting Kit).</p>	<p>Diagram of urinal 6520.003 showing callouts: 1 (Urinal), 2 (Cover), 3 (Outlet Connection), 6 (Flexible Hose), 7 (Cover Mounting Kit).</p>
<p>Callout 3: Outlet Connection. Callout 9: K-2 Hangers.</p>	<p>Callout 3: Outlet Connection. Callout 9: K-2 Hangers.</p>
<p>Callout 4: Battery Box. Callout 5: Battery.</p>	<p>Callout 4: Battery Box. Callout 5: Multi-Board. Callout 8: Extension Wire.</p>

**Fig. 1**  
**Roughing-in Dimensions**

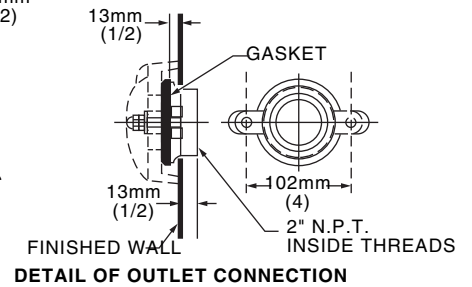
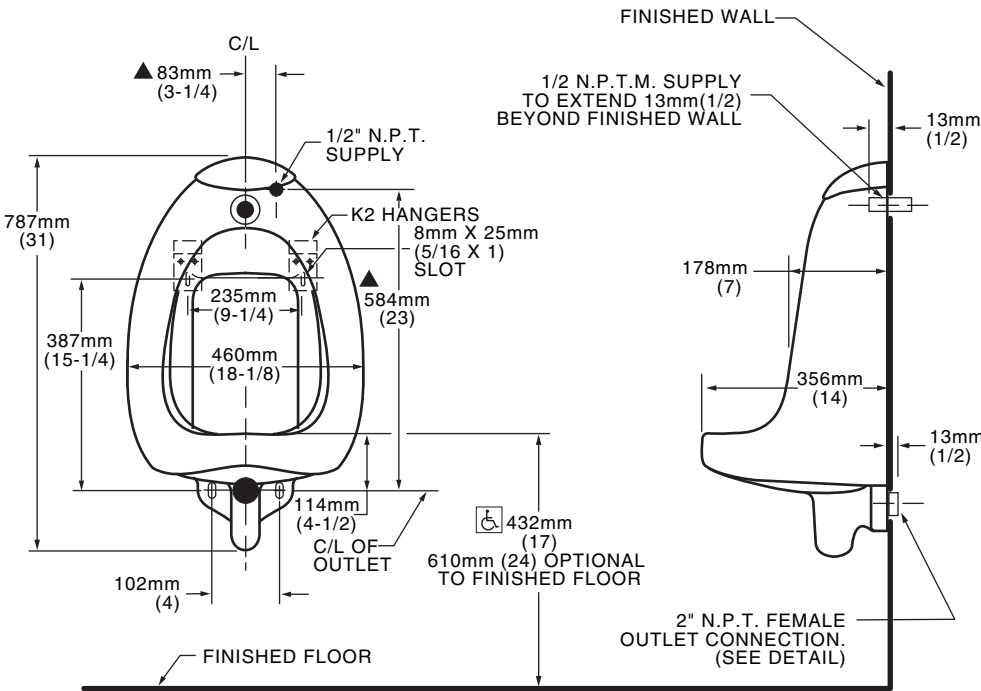
**GENERAL DESCRIPTION:**

**0.5 GPF Urinal with  
Integral Proximity Flush System**

- New **Selectronic™** technology
- Low consumption (0.5 gpf/1.9 Lpf)
- 13mm (1/2") supply line
- Integral flushing mechanism
- Elongated 14" (356mm) rim from finish wall
- Flushing rim
- Washout flush action
- Integral extended sides for privacy
- Two wall hangers
- Outlet connection threaded 2" inside (NPTF)
- Meets ANSI flush requirements at less than 0.5 GPF

**Nominal Dimensions:**

18-1/8" x 14" x 31"  
(460 x 356 x 778mm)

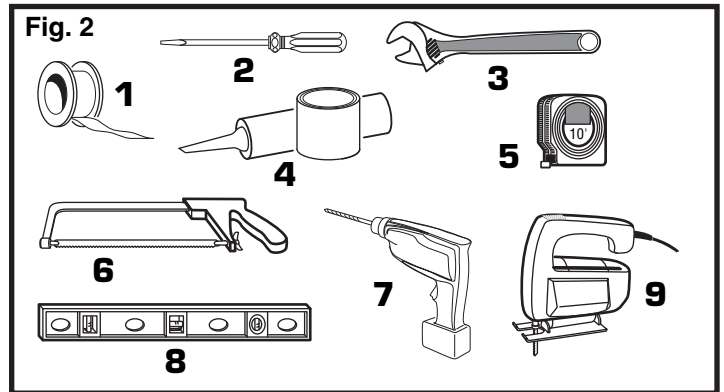


**TOOLS & MATERIALS REQ; Fig. 2**

1. Teflon Tape
2. Flat Blade Screwdriver
3. Adjustable Wrench
4. Plumbers Putty or Caulking
5. Tape Measure
6. Hacksaw
7. Drill
8. Carpenters Level
9. Saber Saw

**MATERIAL REQUIRED**

1. 1-1/2" NPTF x 1/2"NPTF 90 degree street Elbow
2. Hanger Mounting Hardware (as Req.)
3. Stud Crosspiece or suitable Urinal Carrier



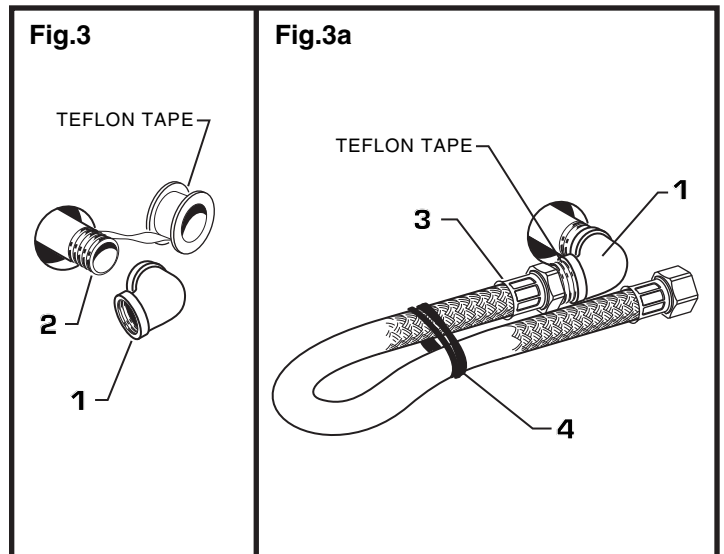
**INSTALLATION**

**1 INSTALL 1/2" ELBOW; Fig. 3**

**CAUTION** Turn water supplies off before beginning

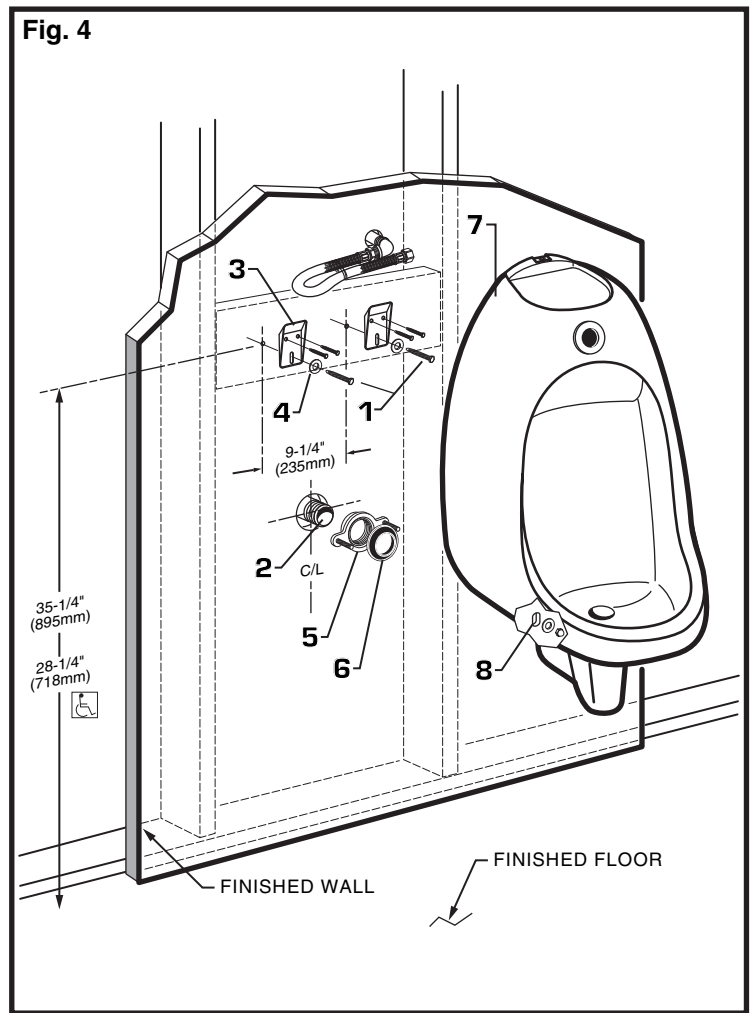
1. Connect a 1/2" NPTF x 1/2" NPTF ELBOW (1) (not included) onto SUPPLY NIPPLE (2). Use Teflon Tape or sealant on threaded connection. Connect the ELBOW (1) as illustrated so that the outlet is facing to the left. Fig. 3.

2. Connect the 1/2" NPTM side of the FLEX HOSE (3) to the ELBOW (1). Fig. 3a. For the steps to follow, keep the FLEX HOSE (3) clear by temporarily holding it in place with a rubber band (4). Follow the instructions in **Step 4** to mount the Urinal. Complete the hook-up as described in **Step 3**.



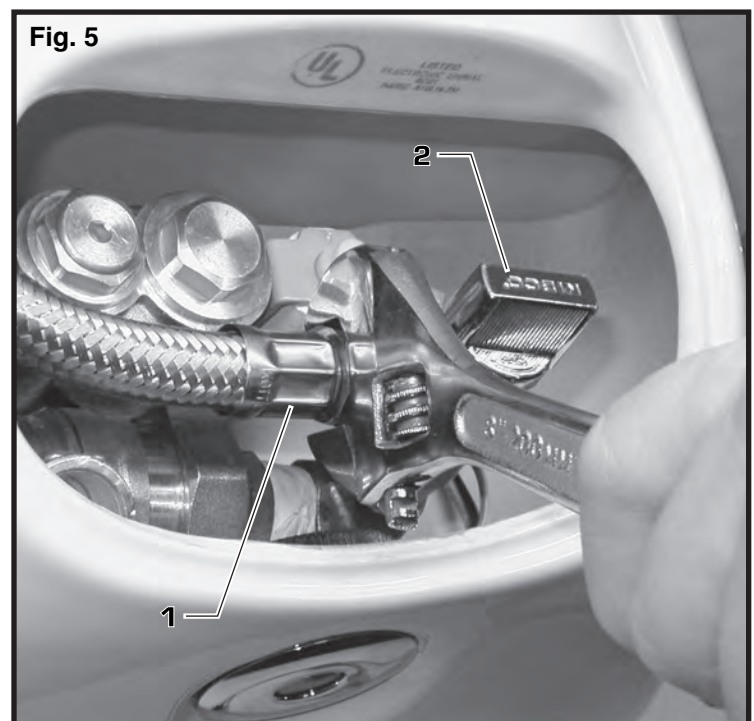
## 2 INSTALL BRACKETS AND MOUNT URINAL; Fig. 4

1. Drill pilot hole for two suitable LAG SCREWS (1) on 9-1/4" (235mm) centers at the specified height above the DRAIN STUBOUT (2) centerline.
2. Install two K2 HANGERS (3) with LAG SCREWS (1) and WASHERS (4), center screw in elongated mounting hole, level and tighten K2 HANGERS (3) securely.
3. Install DRAIN FLANGE (5) on DRAIN STUBOUT (2). Outer surface of stud mounting ears must be 1/2" (13mm) from finished wall. ( See roughing-in drawing, pg. 1) Tighten and level on mounting holes.
4. Install GASKET (6) into DRAIN FLANGE (5) with convex side facing outward.
5. Carefully lift URINAL (7) into place on HANGERS (3), seat squarely and level.
6. Check that drain flange stud mounting holes are accessible through the ELONGATED ANCHOR HOLE SLOTS (8) in the bottom of the URINAL (7).
7. Remove the URINAL (7) and reposition the HANGERS (3) as needed.
8. Tighten lag screws securely and add two additional screws to each hanger bracket, then reset the urinal. Install capnuts and washers on threaded studs and secure unit to drain flange via anchor holes. **DO NOT OVERTIGHTEN OR UNIT MAY BECOME DAMAGED!**
9. Apply a bead of sealant around perimeter of unit.



## 3 COMPLETE WATER SUPPLY CONNECTION; Fig. 5

1. Remove or cut rubber band. The remaining end of the FLEXIBLE SUPPLY HOSE (1) is a female 1/2" compression fitting. Complete the connection by connecting the hose (1) to SHUTOFF VALVE (2) which has a male 1/2" compression fitting. Avoid sharp bends in the FLEXIBLE SUPPLY HOSE (1) which may restrict water flow.



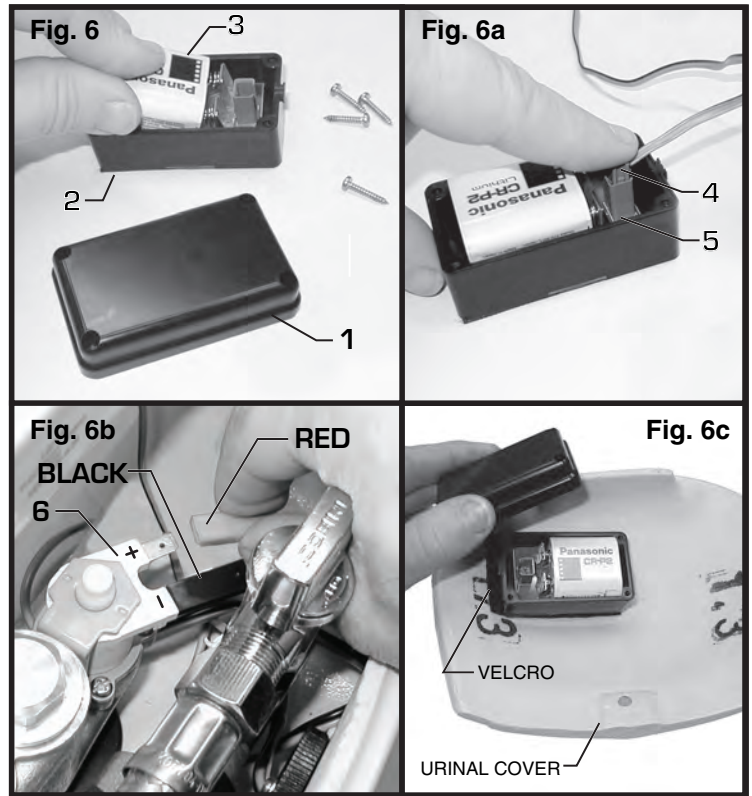


# ELECTRICAL INSTALLATION

## 1 MODEL 6520.001 (BATTERY); Fig. 6

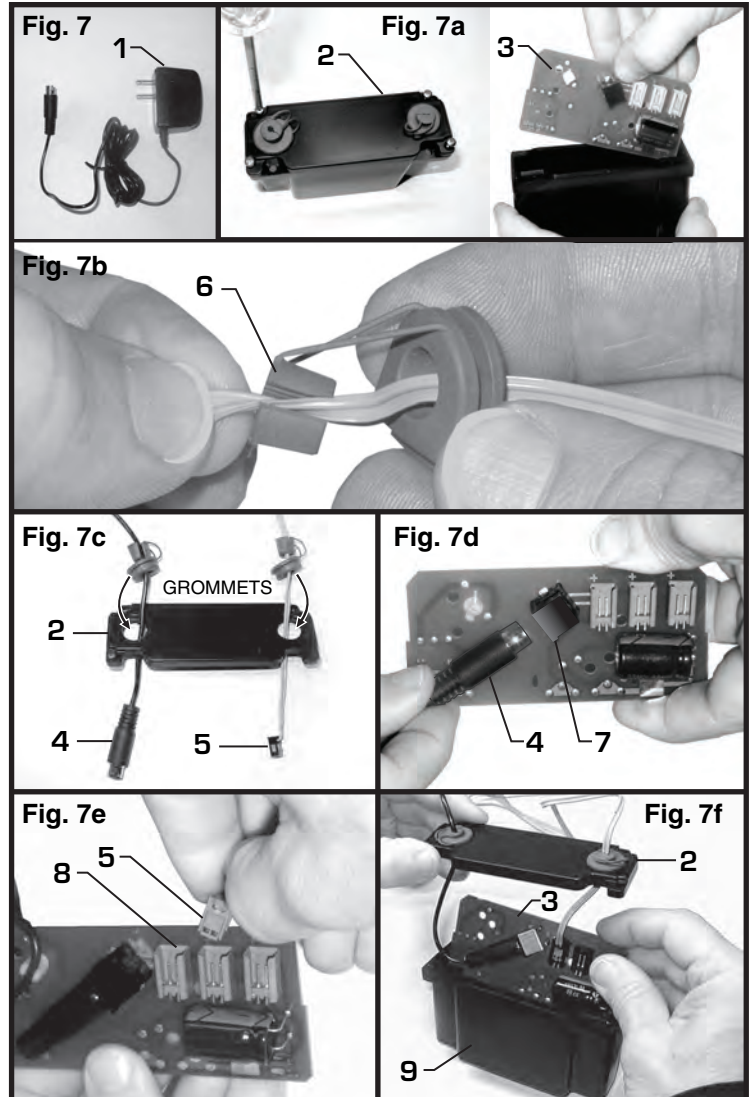
1. Remove BATTERY COVER (1) from BATTERY HOUSING (2). Fig. 6.
2. Reinstall the CR-P2 LITHIUM BATTERY (3). Be sure that the SENSOR POWER CONNECTOR (4) (gray cable) is connected to the BATTERY HOUSING CONNECTOR (5). Fig. 6a. **Note:** Make sure the sensors "eye" is clear of any obstructions during this step.
3. Keep BATTERY COVER (1) off until sensor programming is complete. (See Programming Section).
4. Connect Sensor leads to SOLENOID VALVE (6) Red to Positive (+) Black to Negative (-). Fig. 6b.

If there are any problems with the sensor, check the troubleshooting section. When completed, the Battery Pack can mount under the Urinal Cover utilizing the Industrial Strength Velcro supplied. Fig. 6c .



## 2 MODEL 6520.003 AC POWERED; Fig. 7

1. The installation of the power supply (1) (not included) requires a 120V AC wall outlet. Fig. 7. The power supply input range is 100V - 240, 50/60 Hz.
2. Remove ENCLOSURE COVER (2) and remove Multi Board (3). Fig. 7a. Feed the mini-DIN CONNECTOR (4) through the large GROMMET and gray SENSOR CONNECTOR (5) through the other GROMMET on top of ENCLOSURE COVER (2). Fig. 7c.
3. Insert gray SENSOR WIRE and the mini-DIN WIRE into the SPLIT PLUGS (6). Push SPLIT PLUGS (6) into GROMMET to seal and install into the ENCLOSURE COVER (2). Fig. 7b and 7c.
4. Connect mini-DIN CONNECTOR (4) to the square CONNECTOR (7) on Multi Board. Fig. 7d. Connect SENSOR POWER CABLE (5) (flat, gray) to one of the three RECEPTICALS (8) on the Multi Board (3). Fig. 7e.
5. Replace Multi Board (3) into Multi Box HOUSING (9). Fig. 7f. Before replacing ENCLOSURE COVER (2), make sure cables are going through their respective slots. Also make sure there aren't any more urinals that will be connected in series. If there are, proceed to the next section on Multiple Connections.
6. Plug in power supply (1) into wall outlet.



### 3 FOR AC-VERSION (MULTI HOOK-UP); Fig. 8

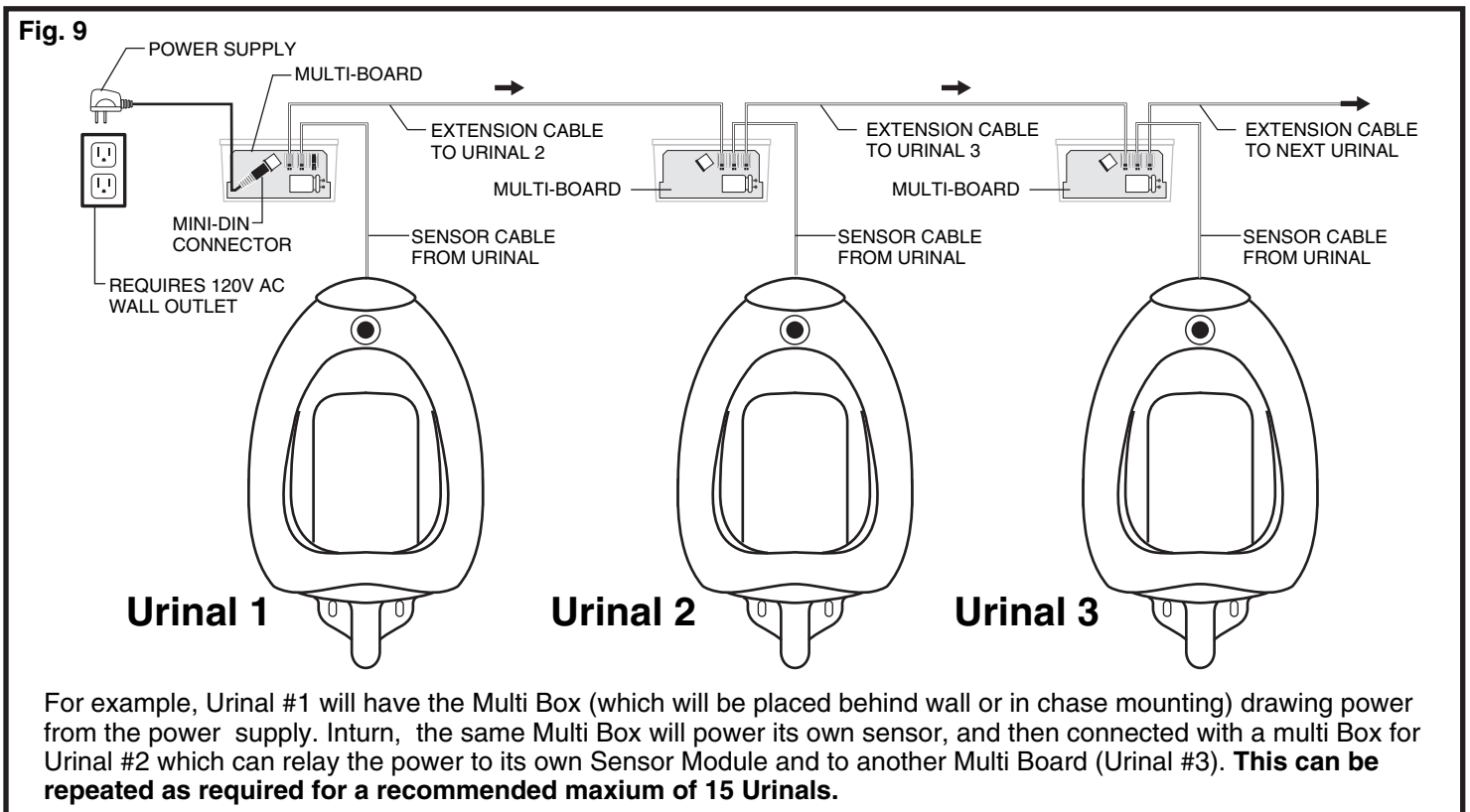
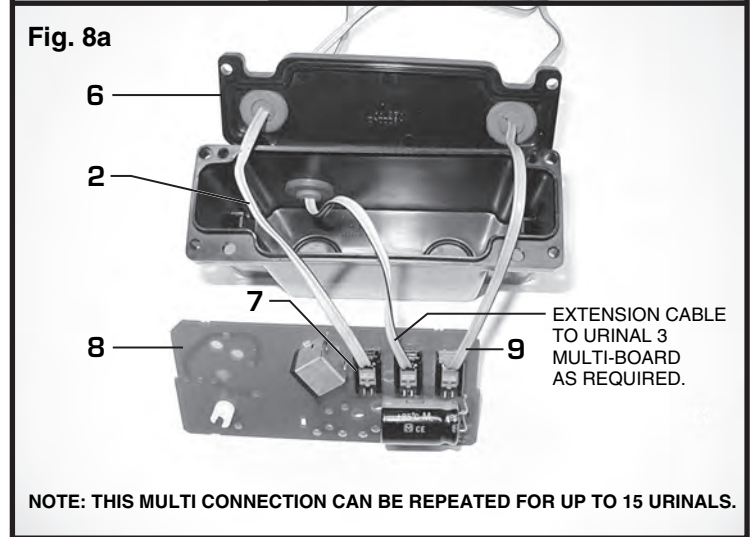
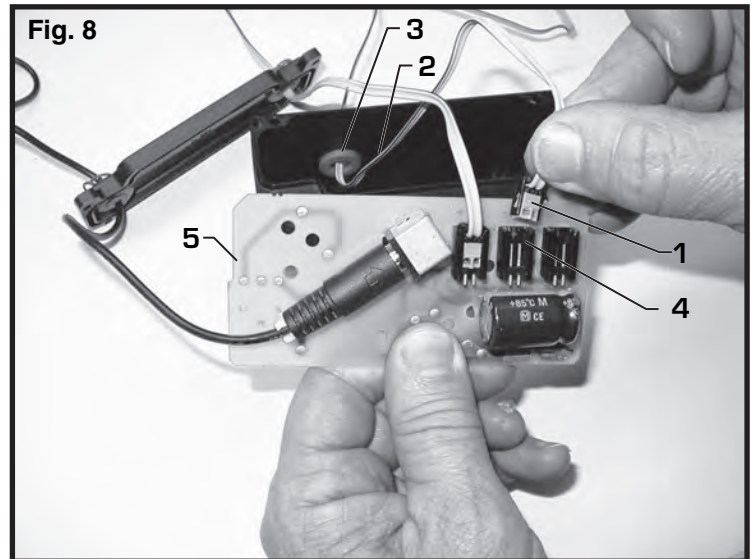
1. (Multiple connections of Model 6520.003 only). Once the first 3 steps in section 2 are completed, take the SENSOR CONNECTOR (1) at the end of the EXTENSION CABLE (2) and feed it through the GROMMET (3) in the back of the Multi Box Housing. Connect SENSOR CONNECTOR (1) to the next available RECEPTICAL (4) on Multi-board (5). Fig. 8.

2. For the second Urinal, remove Multi Box COVER (6). Connect the other end of the EXTENSION CABLE (2) to the RECEPTICAL (7) on the second Multi Board (8). Fig. 8a.

3. Connect SENSOR POWER CABLE (9) (flat, gray) from the second Urinal's sensor to one of the connectors on the second Multi Board (8). Fig. 8a.

4. Before replacing Multi Box COVER (6), make sure cables are going through their respective slots. Also make sure there aren't any more Urinals that will be connected in series. If there are, repeat steps 1 through 3 of this section for the next Urinal.

**Note:** This multi Connection can be repeated for up to 15 Urinals. Fig. 9.

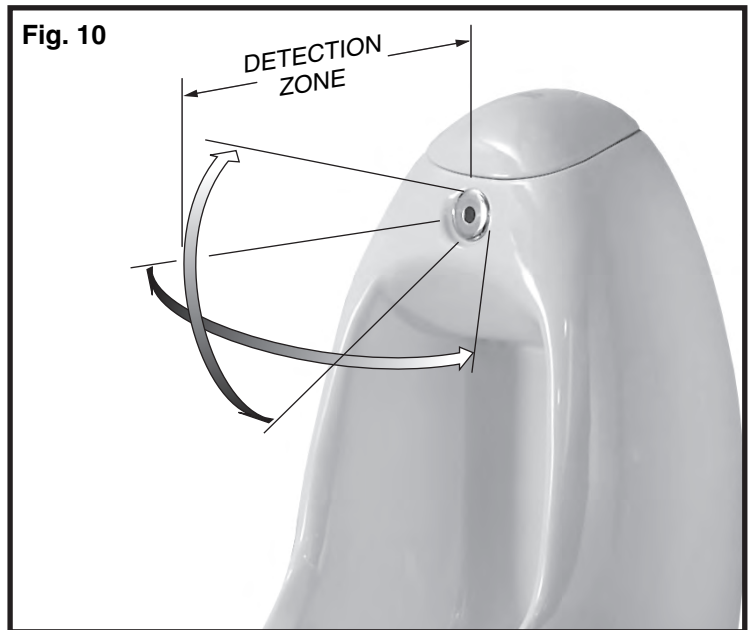


# MAINTENANCE

## 1 URINAL SENSOR OPERATION; Fig. 10

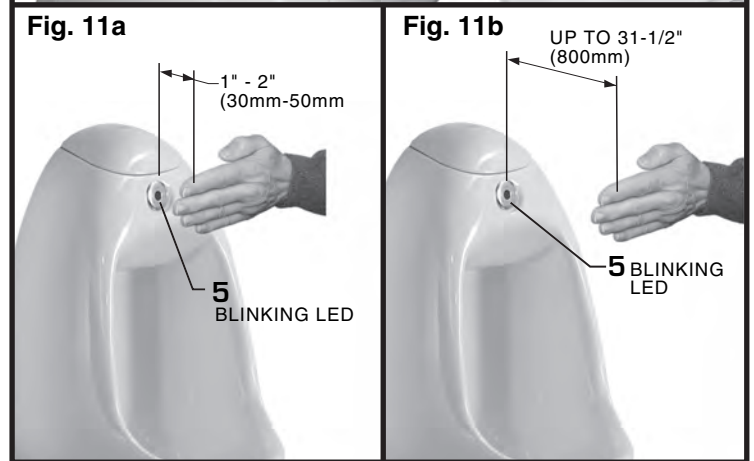
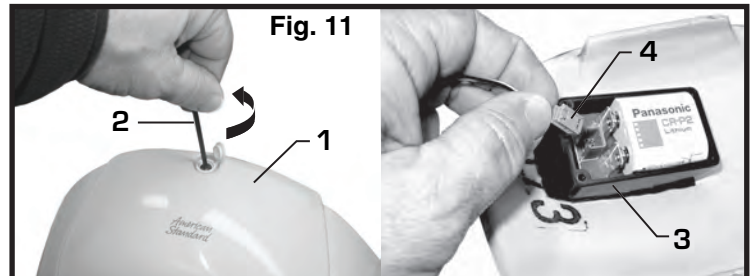
In order to activate the Urinal, the sensor must detect a user for a minimum of 5 seconds. Two seconds after the user leaves the detection zone, the water will flow. If the frequency between users is very short, the unit will switch to short flush approximately every 2 minutes. It will continue until the frequency of users returns to normal.

**Detection Zone: 7-7/8" - 31-1/2" (200mm - 800mm)**  
**Default: Set at Factory 15-3/4" (400mm)**



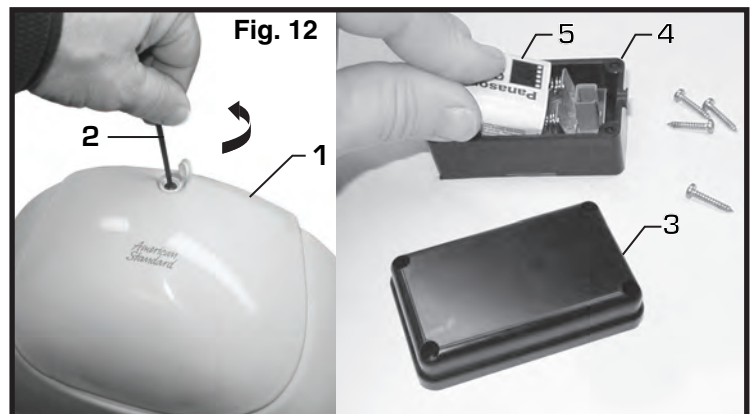
## 2 HOW TO CHANGE SENSOR RANGE; (Factory set at 6") Fig. 11

1. Setting the Detection Zone (Distance):  
Remove COVER (1) from enclosure using special HEX WRENCH (2) supplied with urinal. Remove cover from BATTERY BOX (3). Disconnect GRAY SENSOR WIRE (4) from circuit board, then reconnect.
2. While the SENSOR CONTROL LED (5) is blinking slowly, place your hand 1 - 2 in. (30-50mm) in front of the sensor. Fig. 11a.
3. When the LED stops blinking and stays "ON", move or stand to the desired position and hold in place until the LED begins to blink again. Fig. 11b.
4. Once the SENSOR CONTROL LED (5) begins to blink again, remove your hand from the detection zone. When the flashing stops, the detection distance is set. Replace cover on BATTERY BOX (3) and enclosure COVER (1).



## 3 HOW TO INSTALL AND CHANGE BATTERY; Fig. 12

1. Remove COVER (1) from enclosure using special HEX WRENCH (2) supplied with urinal. Remove COVER (3) from BATTERY BOX (4).
2. Remove the OLD BATTERY (5) carefully.
3. Install NEW BATTERY (5).
4. Reset sensor range. Follow steps above; *How to change sensor range* to complete installation.

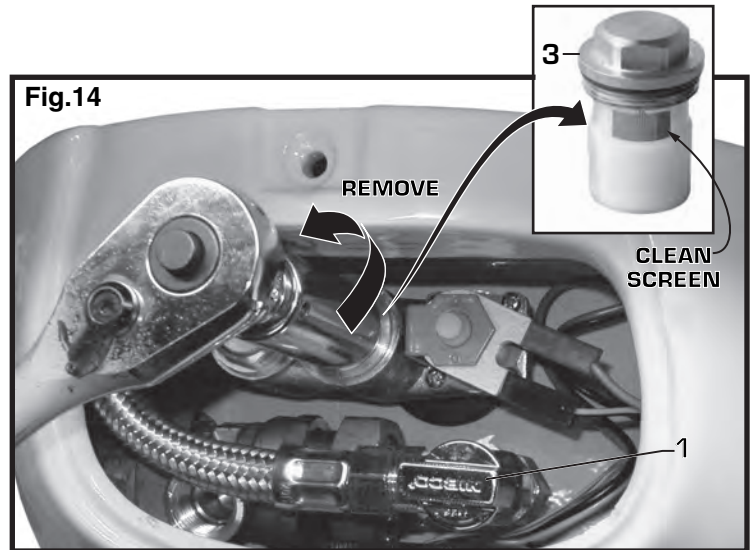
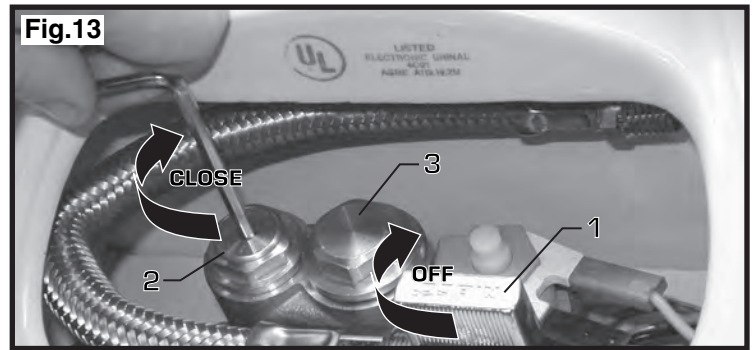




## 4 HOW TO CLEAN FILTER;

**Fig. 13 & 14 CAUTION** Before opening ENCLOSURE disconnect AC power supply.

1. Remove ENCLOSURE COVER.
2. Stop the flow of water through the system by turning the SHUT OFF VALVE (1) clockwise until it stops. Additionally you can shut off the supply at the MANIFOLD'S SUPPLY STOP (2) with 4mm Hex wrench.  
**Note:** Keep the water flowing out of the Urinal while shutting off. Fig. 13.
3. Unthread STRAINER (3) using a 7/8" socket. Fig.14.
4. Pull out the STRAINER (3) and clean with a small brush. Rinse thoroughly with water as necessary.
5. Install the STRAINER (3) back in its place and tighten with a 7/8" socket.  
**Caution: do not over tighten strainer.**  
**Note: It is recommended to clean strainer every 6 months.**
6. Replace ENCLOSURE COVER. Tighten cover screw firmly.



## 5 GENERAL CLEANING; Fig. 15

1. For general cleaning use a damp, soft cloth to clean the Chinaware and the sensor.
2. For cleaning dirt use a soft cloth with diluted dish washing detergent. Wipe the area using a wet cloth and dry using a soft cloth.

### CAUTION

**Do not scratch the sensor when cleaning.**

**Avoid using anything that may scratch the surface.**

Never use polishing power, detergent or anything abrasive. They will damage the surface of the Sensor.



## FAQ'S

**Q:** How will I know if battery needs to be replaced?

**A:** Valve does not open and sensor blinks 2 times interrupted by pause for up to 7 days.

**Q:** Why has the flow rate of the urinal reduced significantly?

**A:** Check and clean strainer.

**Q:** There is no flow out of urinal when I'm in the sensor range and then walk away?

**A:** Check sensor. If sensor blinks 2 times interrupted by pause, replace battery, or call 1800-442-1902.

**Q:** Why does the urinal operate the opposite of expected? Flushes continuously, stops after standing in front of urinal for a few seconds.

**A:** Sensor wires to solenoid are reversed. Black to - & Red to + is correct.

**Q:** What is the operating pressure range?

**A:** Unit will operate with supply pressures ranging from 20-80 psi.