



**BARRIER FREE**

**CADET™ ADA 16-1/2" H 10" ROUGH-IN  
ELONGATED TOILET**

**2998.010**

- Vitreous china
- Low-consumption (6.0 Lpf/1.6 gpf)
- 16-1/2" rim height for accessible and elderly applications
- 10" roughing-in
- Elongated siphon action jetted bowl
- AquaForce flushing technology
- Fully glazed 2" **Ballpass** trapway
- Large 11" x 9" water surface area
- Close-coupled tank with raised lip detail on tank cover
- Color-matched trip lever
- Speed Connect™ tank/bowl coupling system
- Sanitary bar on bowl
- 2 bolt caps
- 100% factory flush tested



**3417.016 Bowl**

**4110.016 Tank**

**Nominal Dimensions:**

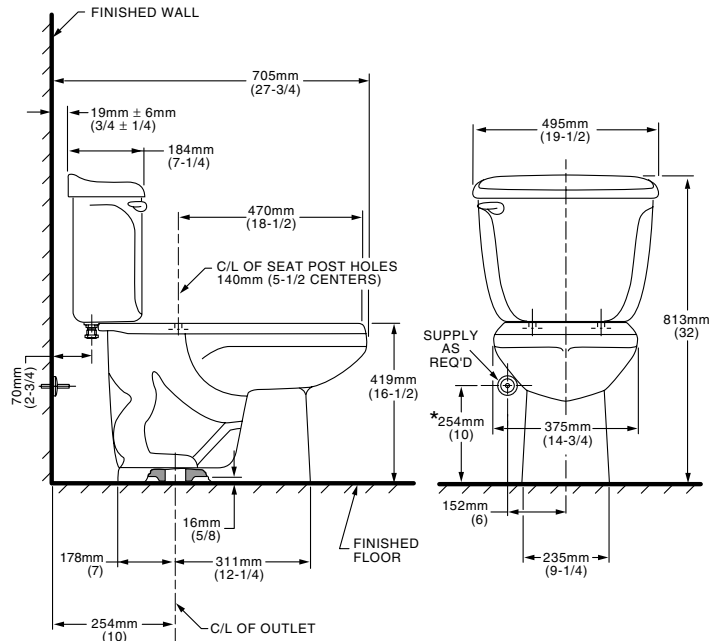
705 x 495 x 813mm (27-3/4" x 19-1/2" x 32")

Fixture only, seat and supply by others

**Compliance Certifications -**

**Meets or Exceeds the Following Specifications:**

- ASME A112.19.2M (and 19.6M) for Vitreous China Fixtures - includes Flush Performance, Ball Pass Diameter, Trap Seal Depth and all Dimensions



**NOTES:**  
THIS TOILET IS DESIGNED TO ROUGH-IN AT A MINIMUM DIMENSION OF 254mm (10") FROM FINISHED WALL TO C/L OF OUTLET.  
SUPPLY NOT INCLUDED WITH FIXTURE AND MUST BE ORDERED SEPARATELY.  
\* DIMENSION SHOWN FOR LOCATION OF SUPPLY IS SUGGESTED.  
IMPORTANT: Dimensions of fixtures are nominal and may vary within the range of tolerances established by ANSI Standard A112.19.2.  
These measurements are subject to change or cancellation. No responsibility is assumed for use of superseded or voided pages.

**To Be Specified**

- Color:
- Seat: American Standard #5324.019 "Rise and Shine" (with easy to clean lift-off hinge system) solid plastic closed front seat with cover. See page TB-001.
- Seat: American Standard #5311.012 "Laurel" molded closed front seat with cover. See page TB-001.
- Alternate Seat:
- Supply with stop:



**MEETS THE AMERICAN DISABILITIES ACT GUIDELINES AND ANSI A117.1 REQUIREMENTS FOR ACCESSIBLE AND USEABLE BUILDING FACILITIES-CHECK LOCAL CODES.**



**BARRIER FREE**

**CADET™ ADA 16-1/2" H ELONGATED TOILET**

**2998.012**

- Vitreous china
- Low-consumption (6.0 Lpf/1.6 gpf)
- 16-1/2" rim height for accessible and elderly applications
- Elongated siphon action jetted bowl
- AquaForce flushing technology
- Fully glazed 2" **Ballpass** trapway
- Large 11" x 9" water surface area
- Close-coupled tank with raised lip detail on tank cover
- Color-matched trip lever
- Speed Connect™ tank/bowl coupling system
- Sanitary bar on bowl
- 2 bolt caps
- 100% factory flush tested

**3417.016 Bowl**

**4112.016 Tank**

**2998.164 with Slotted Rim for Bedpan holding**

**3417.164 Bowl**

**4112.016 Tank**

**Alternate Tank Configurations Available:**

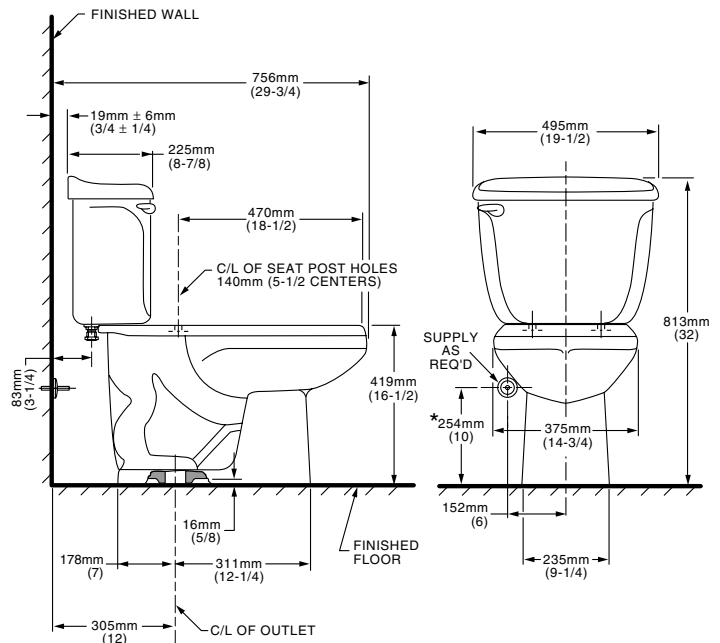
- 4112.800** Tank complete w/Trip Lever  
Located on Right Side

Nominal Dimensions:  
756 x 495 x 813mm (29-3/4" x 19-1/2" x 32")  
Fixture only, seat and supply by others

**Compliance Certifications -**

**Meets or Exceeds the Following Specifications:**

- ASME A112.19.2M (and 19.6M) for Vitreous China Fixtures - includes Flush Performance, Ball Pass Diameter, Trap Seal Depth and all Dimensions



**NOTES:**  
THIS TOILET IS DESIGNED TO ROUGH-IN AT A MINIMUM DIMENSION OF 305MM (12") FROM FINISHED WALL TO C/L OF OUTLET.  
SUPPLY NOT INCLUDED WITH FIXTURE AND MUST BE ORDERED SEPARATELY.  
\* DIMENSION SHOWN FOR LOCATION OF SUPPLY IS SUGGESTED.  
IMPORTANT: Dimensions of fixtures are nominal and may vary within the range of tolerances established by ANSI Standard A112.19.2.  
These measurements are subject to change or cancellation. No responsibility is assumed for use of superseded or voided pages.



**MEETS THE AMERICAN DISABILITIES ACT GUIDELINES AND ANSI A117.1 REQUIREMENTS FOR ACCESSIBLE AND USEABLE BUILDING FACILITIES-CHECK LOCAL CODES.**

To Be Specified

- Color:
- Seat: American Standard #5324.019 "Rise and Shine" (with easy to clean lift-off hinge system) solid plastic closed front seat with cover.  
See page TB-001.
- Seat: American Standard #5311.012 "Laurel" molded closed front seat with cover.  
See page TB-001.
- Alternate Seat:
- Supply with stop:

