

American Standard



BARRIER FREE

AFWALL™ ELONGATED 1.6 GPF FLUSHOMETER TOILET

AFWALL™ ELONGATED TOILET

- Wall-mounted flushometer valve toilet
- Vitreous china
- Low-consumption (6.0 Lpf/1.6 gpf)
- EverClean™ anti-microbial surface which inhibits the growth of stain and odor causing bacteria, mold, and mildew
- Condensation channel
- Elongated bowl
- Powerful direct-fed siphon jet action
- 1-1/2" inlet spud
- Fully-glazed 2-1/8" trapway
- 10" x 12" water surface area
- 100% factory flush tested

- ☐ **3351.160** Elongated bowl only, top spud
- ☐ **3352.160** Elongated bowl only, top spud with slotted rim for bedpan holding (White only)
- ☐ **3353.160** Elongated bowl only, back spud
- ☐ **3354.160** Elongated bowl only, back spud with slotted rim for bedpan holding (White only)

Component Parts:

- ☐ **047007-0070A** Inlet Spud (furnished with bowl)

Nominal Dimensions:

660 x 356 x 381mm
(26" x 14" x 15")

Recommended working pressure—between
25 psi at valve when flushing and 80 psi static

Fixture only, less seat, bolt caps, and flush valve

Compliance Certifications -

Meets or Exceeds the Following Specifications:

- ASME A112.19.2 for Vitreous China Fixtures
- CAN/CSA International B45



SEE REVERSE FOR ROUGHING-IN DIMENSIONS

To Be Specified:

- ☐ Color: ☐ White ☐ Bone ☐ Silver ☐ Linen
- ☐ Seat:
 - ☐ American Standard #5901.100 Heavy duty open front less cover
 - ☐ American Standard #5905.100 Extra heavy duty open front less cover
- ☐ Alternative Seat:
 - ☐ Olsonite #95 open front seat less cover
 - ☐ Church #9500C open front seat less cover
- ☐ Flushometer Valve:
 - ☐ American Standard Selectronic™ #6065.161.002 (Top Spud) Available Nov. 1, 2007
 - ☐ American Standard Selectronic™ #6065.262.007 (Concealed Back Spud) Available Nov. 1, 2007
- ☐ Alternative Flushometer Valve:
 - ☐ Sloan Royal #111 (Top Spud)
 - ☐ Sloan Royal #144-1.5 (Back Spud)

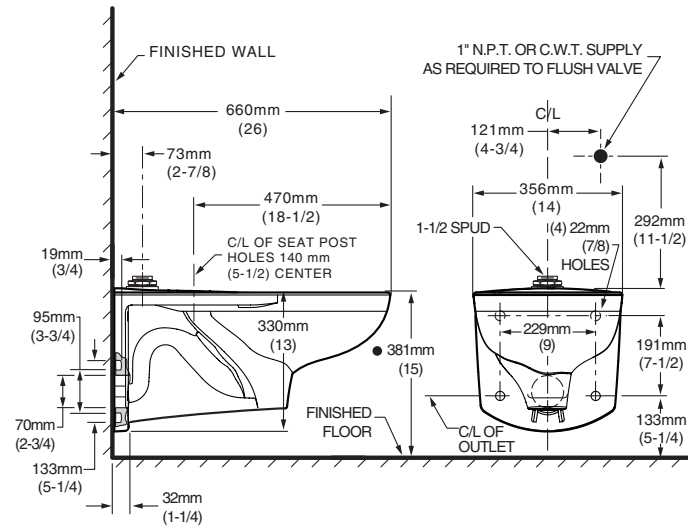


MEETS THE AMERICANS WITH DISABILITIES ACT GUIDELINES
AND ANSI A117.1 REQUIREMENTS FOR ACCESSIBLE AND USABLE
BUILDING FACILITIES - CHECK LOCAL CODES.

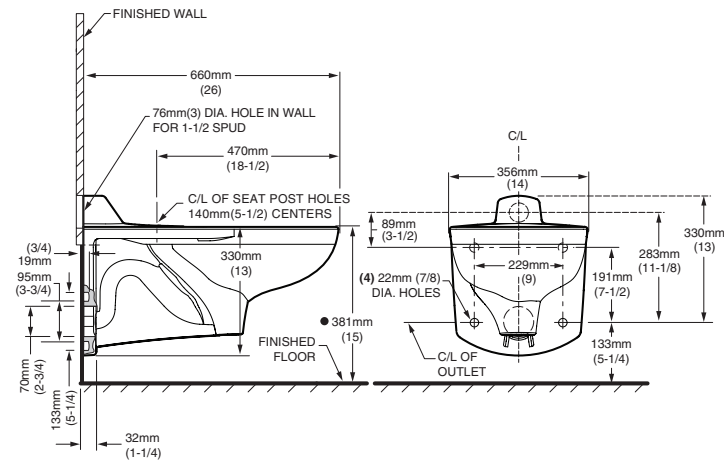
- When installed so top of seat is 432 to 483mm (17" to 19") from the finished floor.

AFWALL™ ELONGATED 1.6 GPF FLUSHOMETER TOILET

3351.160/3352.160



3353.160/3354.160



NOTES:

- Toilet designed to meet ADA accessibility standards when top of seat height set at 432 to 483mm (17" to 19") from finished floor.

PRODUCT 3351.160 SHOWN, 3352.160 SAME AS EXCEPT WITH SLOTTED RIM FOR BED PAN HOLDING.

PRODUCT 3353.160 SHOWN, 3354.160 SAME AS EXCEPT WITH SLOTTED RIM FOR BED PAN HOLDING.

WASTE OUTLET SEAL RING MUST BE NEOPRENE OR GRAPHITE-FELT (WAX RING NOT RECOMMENDED).

SUGGESTED 2mm (1/16) CLEARANCE BETWEEN FACE OF WALL AND BACK OF BOWL. TO COMPLY WITH AREA CODE GOVERNING THE HEIGHT OF VACUUM BREAKER ON THE FLUSHOMETER VALVE, THE PLUMBER MUST VERIFY DIMENSIONS SHOWN FOR SUPPLY ROUGHING.

FLUSHOMETER VALVE NOT INCLUDED WITH FIXTURE AND MUST BE ORDERED SEPARATELY.

CARRIER FITTING AS REQUIRED TO BE FURNISHED BY OTHERS.

CARRIER FITTING AS REQUIRED TO BE FURNISHED BY OTHERS
PROVIDE SUITABLE REINFORCEMENT FOR ALL WALL SUPPORT.

IMPORTANT: Dimensions of fixtures are nominal and may vary within the range of tolerances established by ANSI Standard A112.19.2.

These measurements are subject to change or cancellation. No responsibility is assumed for use of superseded or voided pages