

American Standard



BARRIER FREE

AFWALL™ ADA RETROFIT

- Wall-mounted flushometer valve toilet
- Vitreous china
- Low-consumption (6.0 Lpf/1.6 gpf)
- EverClean™ anti-microbial surface which inhibits the growth of stain and odor causing bacteria, mold, and mildew
- Elongated bowl
- Powerful direct-fed siphon jet action
- Fully-glazed 2-1/8" trapway
- 10" x 12" water surface area
- Condensation channel
- 1-1/2" inlet spud
- 100% factory flush tested

- ☐ **3355.160** Elongated bowl only, top spud
- ☐ **3356.160** Elongated bowl only, top spud with slotted rim for bedpan holding (White only)
- ☐ **3357.160** Elongated bowl only, back spud
- ☐ **3358.160** Elongated bowl only, back spud with slotted rim for bedpan holding (White only)

Afwall ADA 1.6 replaces standard wall-hung 3.5 GPF or 1.6 GPF models and roughs-in at 410mm (16-1/8") rim height **to meet ADA with no need to modify the existing carrier or through wall supply** (providing centerline of current outlet is 133mm [5-1/4"] above finished floor).

Component Parts:

- ☐ **047007-0070A** Inlet spud (furnished with bowl)
- ☐ **736046-100** Flushometer valve rough-in adapter kit (furnished with bowl)

Nominal Dimensions:

660 x 356 x 419mm
(26" x 14" x 16-1/2")

For Top spud bowls, American Standard kit #736046-100 Flushometer Valve Conversion Kit containing a 25mm (1") chrome-plated street ell, a vacuum breaker, and a 330mm (13") tail piece included to meet minimum 152mm (6") code between bowl and vacuum breaker.

Recommended working pressure—between 25 psi at valve when flushing and 80 psi static

Fixture only, less seat, carrier, bolt caps, and flush valve

Compliance Certifications -

Meets or Exceeds the Following Specifications:

- ASME A112.19.2 for Vitreous China Fixtures
- CAN/CSA International B45

AFWALL™ ADA RETROFIT 1.6 GPF FLUSHOMETER TOILET



SEE REVERSE FOR ROUGHING-IN DIMENSIONS

To Be Specified:

- ☐ Color: ☐ White ☐ Bone ☐ Silver ☐ Linen
- ☐ Seat:
 - ☐ American Standard #5901.100 Heavy duty open front less cover
 - ☐ American Standard #5905.100 Extra heavy duty open front less cover
- ☐ Alternative Seat:
 - ☐ Olsonite #95 open front seat less cover
 - ☐ Church #9500C open front seat less cover
- ☐ Flushometer Valve:
 - ☐ American Standard Selectronic™ #6065.161.002 (Top Spud) Available Nov. 1, 2007
 - ☐ American Standard Selectronic™ #6065.262.007 (Concealed Back Spud) Available Nov. 1, 2007
- ☐ Alternative Flushometer Valve:
 - ☐ Sloan Royal #111 (Top Spud)
 - ☐ Sloan Royal #144-1.5 (Back Spud)



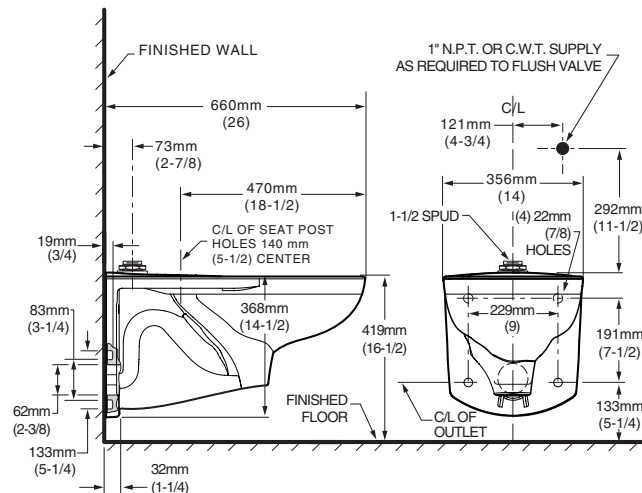
MEETS THE AMERICANS WITH DISABILITIES ACT GUIDELINES AND ANSI A117.1 REQUIREMENTS FOR ACCESSIBLE AND USABLE BUILDING FACILITIES - CHECK LOCAL CODES.

- When installed so top of seat is 432 to 483mm (17" to 19") from the finished floor.

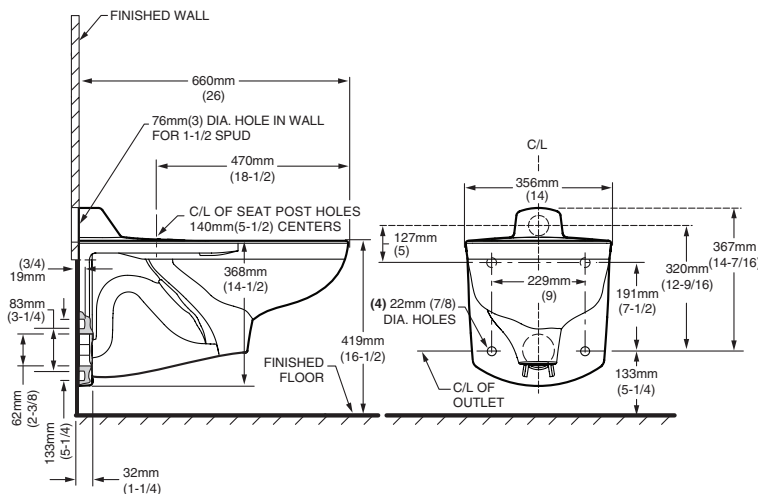


AFWALL™ ADA RETROFIT 1.6 GPF FLUSHOMETER TOILET

3355.160/3356.160



3357.160/3358.160



NOTES:

● Toilet designed to meet ADA accessibility standards when top of seat height set at 432 to 483mm (17" to 19") from finished floor.

PRODUCT 3355.160 AND 3357.160 SHOWN, 3356.160 AND 3358.160 SAME AS EXCEPT WITH SLOTTED RIM FOR BED PAN HOLDING.

* REQUIRES AMERICAN STANDARD KIT 736046-100 TO UPGRADE EXISTING INSTALLATION OF FLUSHOMETER VALVE AND COMPONENTS.

WASTE OUTLET SEAL RING MUST BE NEOPRENE OR GRAPHITE-FELT (WAX RING NOT RECOMMENDED).

SUGGESTED 1/16 CLEARANCE BETWEEN FACE OF WALL AND BACK OF BOWL.

TO COMPLY WITH AREA CODE GOVERNING THE HEIGHT OF VACUUM BREAKER ON THE FLUSHOMETER VALVE, THE PLUMBER MUST VERIFY DIMENSIONS SHOWN FOR SUPPLY ROUGHING.

FLUSHOMETER VALVE NOT INCLUDED WITH FIXTURE AND MUST BE ORDERED SEPARATELY.

CARRIER FITTING AS REQUIRED TO BE FURNISHED BY OTHERS. PROVIDE SUITABLE REINFORCEMENT FOR ALL WALL SUPPORTS.

IMPORTANT: Dimensions of fixtures are nominal and may vary within the range of tolerances established by ANSI Standard A112.19.2.

These measurements are subject to change or cancellation. No responsibility is assumed for use of superseded or voided pages.