

**RAVENNA ELONGATED TOILET**

**2642.016**

- Vitreous china
- Low-consumption (6.0 Lpf/1.6 gpf)
- Elongated siphon action jetted bowl
- Fully glazed 2" ballpass trapway
- Large 11" x 9" water surface area
- AquaForce flushing technology
- D-shaped style tank w/fitted tank cover
- Chrome trip lever
- Speed Connect™ tank/bowl coupling system
- Sanitary bar on bowl
- 2 color matched bolt caps
- 100% factory flush tested
- Design coordinated to Ravenna pedestal lavatory

**3459.016 Bowl**

**4096.016 Tank**

**Alternate Tank:**

**4096.516 with Aquaguard tank liner**

Nominal Dimensions: 29-1/2" x 18-3/4" x 29"  
(749 x 476 x 737mm)

Fixture only, seat and supply by others

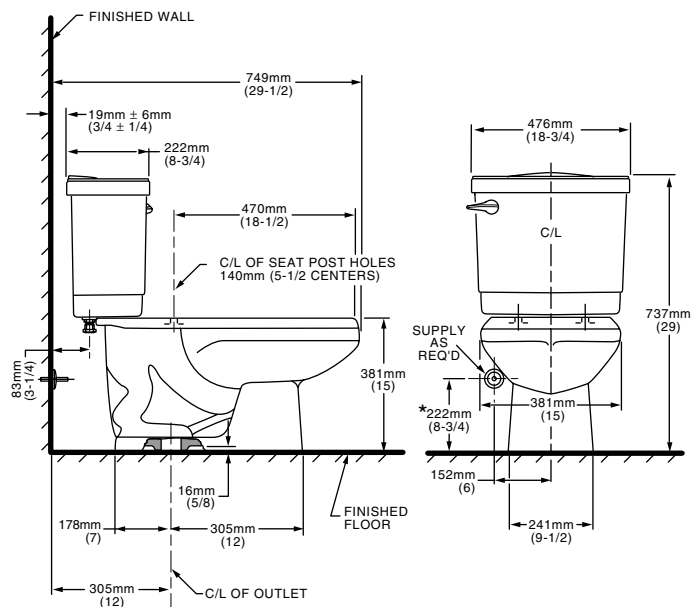
**Compliance Certifications -**

**Meets or Exceeds the Following Specifications:**

- ASME A112.19.2M (and 19.6M) for Vitreous China Fixtures - includes Flush Performance, Ball Pass Diameter, Trap Seal Depth and all Dimensions

**To Be Specified**

- ☐ Color:
- ☐ Seat: American Standard #5324.019 "Rise and Shine" (with easy to clean lift-off hinge system) solid plastic, closed front, elongated seat with cover. See page TB-001.
- ☐ Seat: American Standard #5311.012 "Laurel" molded closed front seat with cover. See page TB-001.
- ☐ Alternate Seat:
- ☐ Supply with stop:



**NOTES:**

THIS COMBINATION IS DESIGNED TO ROUGH-IN AT A MINIMUM DIMENSION OF 305MM (12") FROM FINISHED WALL TO C/L OF OUTLET.

\* DIMENSION SHOWN FOR LOCATION OF SUPPLY IS SUGGESTED.

SUPPLY NOT INCLUDED WITH FIXTURE AND MUST BE ORDERED SEPARATELY.

IMPORTANT: Dimensions of fixtures are nominal and may vary within the range of tolerance established by ANSI Standard A112.19.2

These measurements are subject to change or cancellation. No responsibility is assumed for use of superseded or voided pages.