

STRATFORD™ 5-1/2' WHIRLPOOL AND BATHING POOL

- 2470.028W Whirlpool Featuring System I:**
 - Americast® brand engineered material
 - Acid-resistant porcelain finish
 - Integral lumbar support with beveled headrest
 - Full slip-resistant coverage
 - End drain outlet
 - 1.6 HP single speed, self-draining pump/motor
 - Factory installed power cord and plug
 - Six multi-directional and flow-adjustable jets
 - Deck-mounted air switch On/Off
 - Two silent air volume controls
 - Quick Connect Safe-T-Heater connection system
 - Factory installed and tested whirlpool system

- 2470.128W Whirlpool featuring System I with Grab Bar Drilling**
 - Same as 2470.028W except with grab bar drilling (grab bar must be ordered separately)

- 2470.028WC EverClean® Whirlpool featuring System I**
 - Same as 2470.028W except with the EverClean® System

- 2470.128WC EverClean® Whirlpool featuring System I**
 - Same as 2470.128W except with the EverClean whirlpool system and grab bar drilling (grab bar must be ordered separately)

- 2470.002 Bathing Pool**
- 2470.102 Bathing Pool with Grab Bar Drilling**
 - Same as 2470.002 except with grab bar drilling (grab bar must be ordered separately)

Nominal Dimensions:

66" x 32" x 20" (1676 x 813 x 508mm)

Compliance Certifications - Meets or Exceeds the Following Specifications:

- Underwriters Laboratories - Hydromassage Bathtubs UL 1795
- ASME A112.19.7M for Whirlpool Appliances
- ASME A112.19.4M for Americast Fixtures
- ASTM F-462 for Slip-resistant Bathing Facilities
- ASTM E162 for Flammability
- NFPA 258 for Smoke Density



To Be Specified - Required:

- Color:
- Bath Filler: (specify finish)
- Bath Drain: 1583.470 (specify finish)

To Be Specified - Optional:

- Safe-T-Heater*: 9075.120
- Jet Trim Ring Kit: 9860.200-one per kit (specify color) for Body Massage Jets only
- Universal Tile Bead Kit: 751755-100

For color/finish availability and other faucet choices, please see the Product Selector and Pricing Guide.

* **NOTE:** the Safe-T-Heater is designed to maintain water temperature during operation. It will not heat cold water to desired bathing temperature.

American Standard whirlpools and air baths with EverClean® incorporate a patented silver-ion additive right into the circulation piping to protect the pipes from mold, mildew, algae and fungus that could cause deterioration or staining of the pipes.

SEE REVERSE FOR PRODUCT DIMENSIONS
AND SPECIFICATIONS

STRATFORD™ 5-1/2' WHIRLPOOL AND BATHING POOL

AMERICAST® BRAND ENGINEERED MATERIAL

NOTES:

BATH CAN BE INSTALLED EITHER ABOVE OR BELOW FLOOR LINE AS PIER, ISLAND, OR PENINSULA TYPE INSTALLATION. SUPPORT OF BATH BY RIM. SUMP SUPPORT NOT REQUIRED. SUPPORT AND ENCLOSING MATERIAL BY OTHERS.

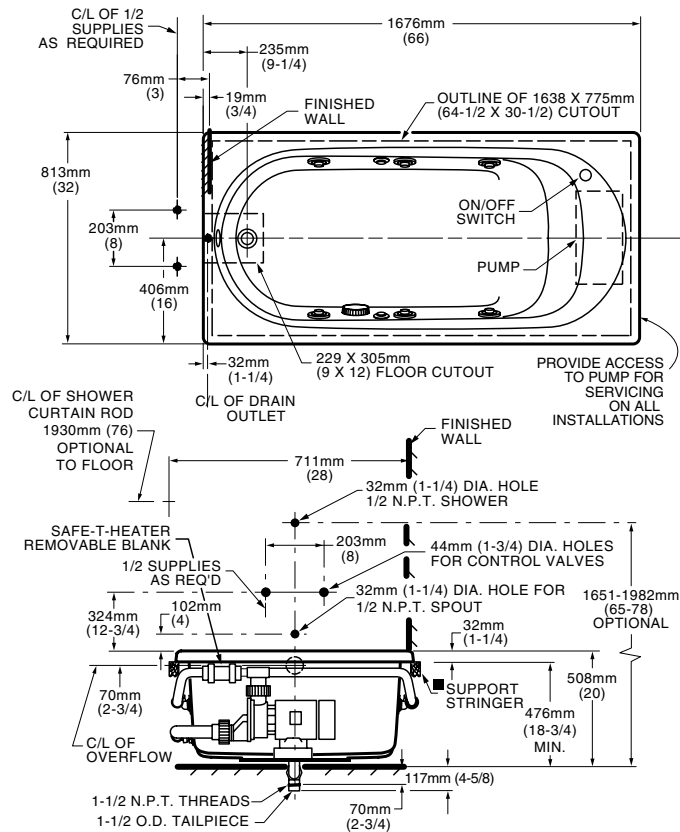
REFER TO INSTALLATION INSTRUCTIONS SUPPLIED WITH WHIRLPOOL/BATH FOR ADDITIONAL INFORMATION.

OPTIONAL 3-WALL TILING BEAD KIT AVAILABLE AND MUST BE ORDERED SEPARATELY.

SHOWN WITH 8620. SERIES AMARILIS BATH/SHOWER FITTING AND POP-UP C.D. & O.

FITTINGS NOT INCLUDED AND MUST BE ORDERED SEPARATELY. SHOWN WITH POP-UP C.D. & O.

PROVIDE SUITABLE REINFORCEMENT FOR ALL WALL SUPPORTS. CONCEALED PIPING NOT INCLUDED.

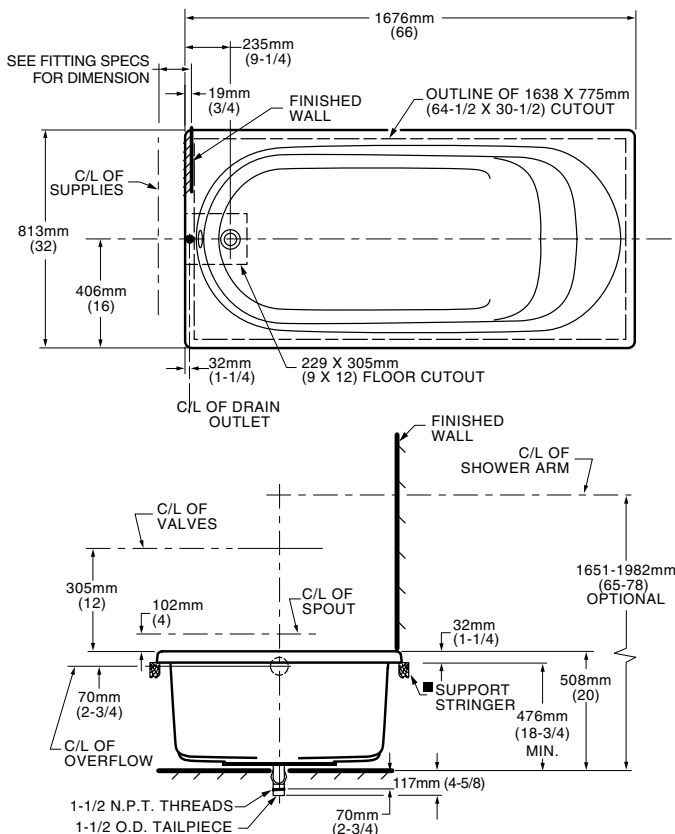


GENERAL SPECIFICATIONS FOR 2470 WHIRLPOOL

INSTALLED SIZE	66 x 32 x 20 In. (1676 x 813 x 508mm)
WEIGHT	201 Lbs. (90 Kg.)
WEIGHT w/WATER	701 Lbs. (315 Kg.)
GAL. TO OVERFLOW	60 Gal. (227 L)
WHIRLPOOL MIN. OPERATING VOL.	40 Gal. (152 L)
BATHING WELL AT SUMP	42 x 19 In. (1067 x 483mm)
BATHING WELL AT RIM	60 x 27 In. (1524 x 686mm)
WATER DEPTH TO OVERFLOW	14 In. (356mm)
FLOOR LOADING (PROJECTED AREA)	55 Lbs./Sq.Ft. (223 Kgs./Sq.m)
PTS.	13.9
CUBE (FT ³)	33.7

WHIRLPOOL ELECTRICAL SPECIFICATIONS

SYSTEM I PUMP	1.6 HP, 9.7 AMPS, 120V.
---------------	-------------------------



IMPORTANT: Dimensions of fixtures are nominal and may vary within the range of tolerances established by ANSI Standard A112.19.4. These measurements are subject to change or cancellation. No responsibility is assumed for use of superseded or voided leaflet.

GENERAL SPECIFICATIONS FOR 2470 BATHING POOL

INSTALLED SIZE	66 x 32 x 20 In. (1676 x 813 x 508mm)
WEIGHT	174 Lbs. (78 Kg.)
WEIGHT w/WATER	674 Lbs. (303 Kg.)
GAL. TO OVERFLOW	60 Gal. (227 L)
BATHING WELL AT SUMP	42 x 19 In. (1067 x 483mm)
BATHING WELL AT RIM	60 x 27 In. (1524 x 686mm)
WATER DEPTH TO OVERFLOW	14 In. (356mm)
FLOOR LOADING (PROJECTED AREA)	48 Lbs./Sq.Ft. (206 Kgs./Sq.m)
PTS.	13.9
CUBE (FT ³)	33.7