

NEOLO™ ELONGATED FV TOILET

- Vitreous china
- Low consumption (6.0 Lpf/1.6gpf)
- Wall outlet elongated bowl,
angle back and base
- Siphon jet flush action
- Fully glazed 2" ballpass trapway
- 10" x 13" water surface area
- 1-1/2" inlet spud
- 4 bolt caps
- 100% factory flush tested

2529.016

Top spud, wall outlet

2530.016

Back spud, wall outlet

2531.016

Back spud, wall outlet, integral seat (illustrated)



NOTE: Roughing-in information shown on reverse side of page

Nominal Dimensions:

673 x 368 x 457mm (26-1/2" x 14-1/2" x 15")

Recommended working pressure--between
30 psi at valve when flushing and 80 psi
static

Fixture only, less seat

Compliance Certifications -

Meets or Exceeds the Following Specifications:

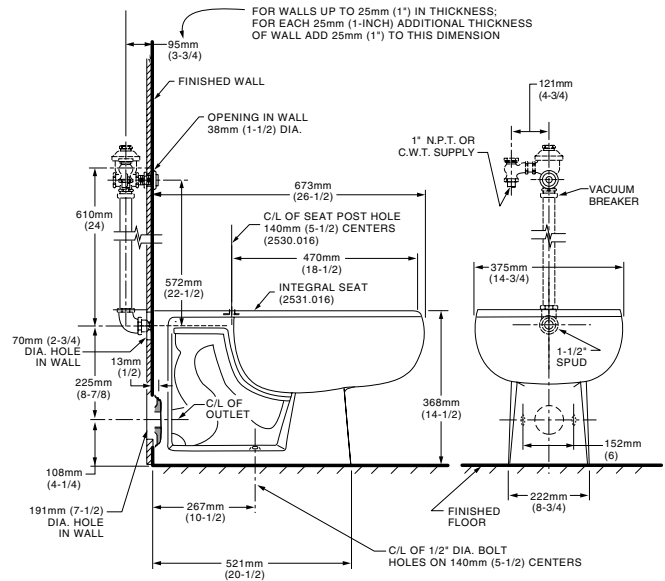
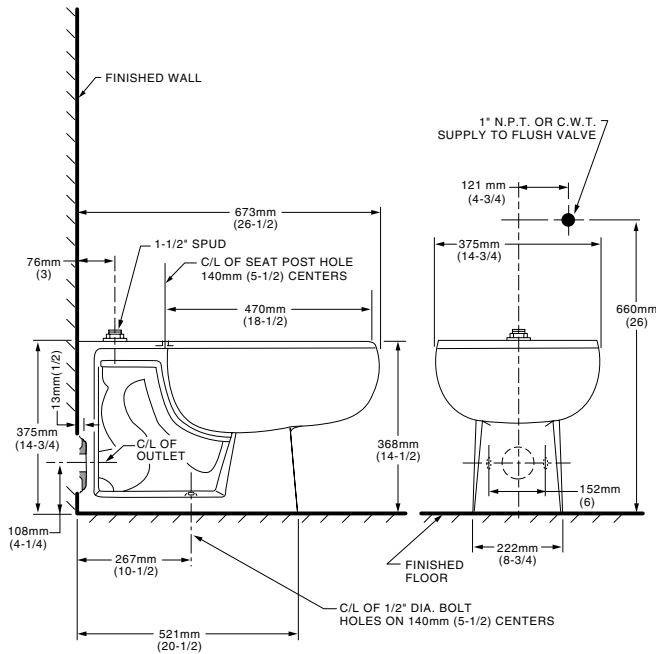
- ASME A112.19.2M (and 19.6M) for Vitreous China Fixtures - includes Flush Performance, Ball Pass Diameter, Trap Seal Depth and all Dimensions

To Be Specified

- Color: White
- Seat: Olsonite #95 open front seat less cover
- Seat: Church #9500C open front seat less cover
- Seat: Pressalit seats for American Standard, closed front seat with cover (thermoset compound material). See pages TBU-002 through TBU-005.
- Alternate Seat:
- Flush Valve: Sloan Royal #111 (top spud)
Sloan Royal #152-1.5 (back spud)
- Alternative Flush Valve:

2529.016

2530.016



NOTES:

WASTE OUTLET SEAL RING MUST BE NEOPRENE OR GRAPHITE-FELT (WAX RING NOT RECOMMENDED).
TO COMPLY WITH AREA CODE GOVERNING THE HEIGHT OF VACUUM BREAKER ON FLUSH VALVE, THE PLUMBER MUST VERIFY DIMENSIONS SHOWN FOR SUPPLY ROUGH-IN.

FLUSH VALVE NOT INCLUDED AND MUST BE ORDERED SEPARATELY.

IMPORTANT: Dimensions of fixtures are nominal and may vary within the range of tolerances established by ANSI Standard A112.19.2.

These measurements are subject to change or cancellation. No responsibility is assumed for use of superseded or voided pages.