

**COLONY™ ROUND FRONT TOILET**

☐ **2388.012**

- Vitreous china
- Low-consumption (6.0 Lpf/1.6 gpf)
- Round front siphon action jetted bowl
- Fully glazed 2" trapway
- American Standard Aquameter™ Water Control
- Large 10" x 8" water surface area
- Color-matched trip lever
- Sanitary bar on bowl
- 2 bolt caps
- 100% factory flush tested

☐ **3338.012** Bowl

☐ **4392.016** Tank

Nominal Dimensions:

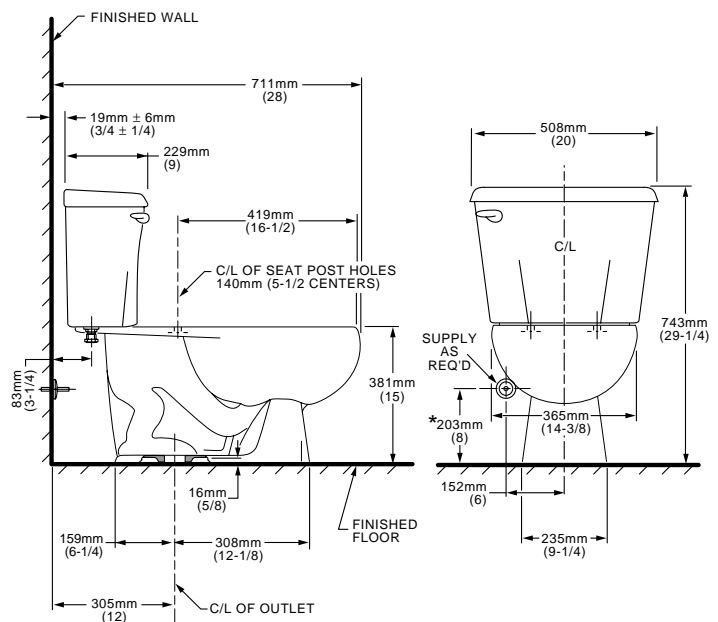
711 x 508 x 743mm (28" x 20" x 29-1/4")

Fixture only, seat and supply by others

**Alternate Tank Configurations Available:**

☐ **4392.500** Tank complete w/Aquaguard Liner

☐ **4392.800** Tank complete w/Trip Lever Located on Right Side



**NOTES:**

THIS COMBINATION IS DESIGNED TO ROUGH-IN AT A MINIMUM DIMENSION OF 305MM (12") FROM FINISHED WALL TO C/L OF OUTLET.

\* DIMENSION SHOWN FOR LOCATION OF SUPPLY IS SUGGESTED.

SUPPLY NOT INCLUDED WITH FIXTURE AND MUST BE ORDERED SEPARATELY.

IMPORTANT: Dimensions of fixtures are nominal and may vary within the range of tolerance established by ANSI Standard A112.19.2

These measurements are subject to change or cancellation. No responsibility is assumed for use of superseded or voided pages.

**Compliance Certifications -**

**Meets or Exceeds the Following Specifications:**

- ASME A112.19.2M (and 19.6M) for Vitreous China Fixtures - includes Flush Performance, Ball Pass Diameter, Trap Seal Depth and all Dimensions

**To Be Specified**

- ☐ **Color:**
- ☐ **Seat:** American Standard #5322.011 "Rise and Shine" (with easy to clean lift-off hinge system) solid plastic closed front seat with cover. See page TB-001.
- ☐ **Seat:** American Standard #5308.014 "Laurel" molded closed front seat with cover. See page TB-001.
- ☐ **Alternate Seat:**
- ☐ **Supply with stop:**

**COLONY™ ROUND FRONT 10"R TOILET**

**2388.010**

- Vitreous china
- Low-consumption (6.0 Lpf/1.6 gpf)
- 10" roughing-in
- Round front siphon action jetted bowl
- Fully glazed 2" trapway
- American Standard Aquameter™ Water Control
- Large 10" x 8" water surface area
- Color-matched trip lever
- Sanitary bar on bowl
- 2 bolt caps
- 100% factory flush tested

**3338.012 Bowl**

**4310.016 Tank**

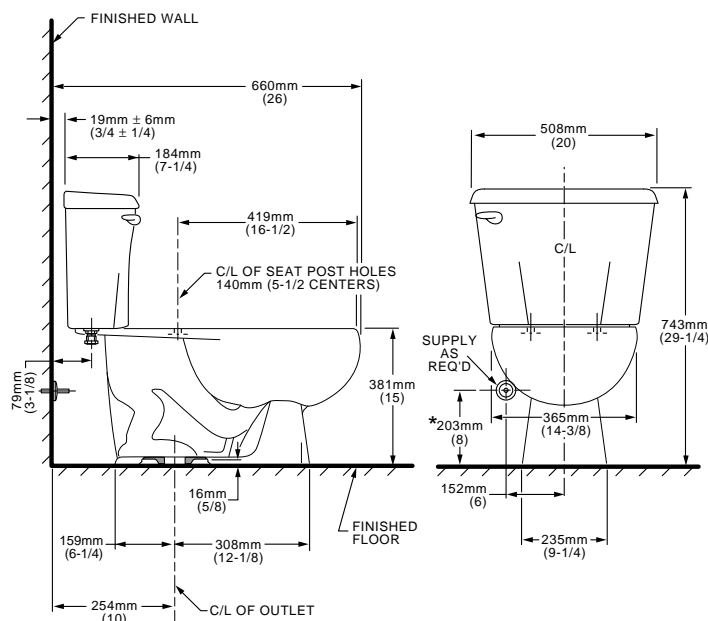
Nominal Dimensions:

660 x 508 x 743mm (26" x 20" x 29-1/4")

Fixture only, seat and supply by others

**To Be Specified**

- ☐ Color:
- ☐ Seat: American Standard #5322.011 "Rise and Shine" (with easy to clean lift-off hinge system) solid plastic closed front seat with cover. See page TB-001.
- ☐ Seat: American Standard #5308.014 "Laurel" molded closed front seat with cover. See page TB-001.
- ☐ Alternate Seat:
- ☐ Supply with stop:



**NOTES:**

THIS COMBINATION IS DESIGNED TO ROUGH-IN AT A MINIMUM DIMENSION OF 254MM (10") FROM FINISHED WALL TO C/L OF OUTLET.

\* DIMENSION SHOWN FOR LOCATION OF SUPPLY IS SUGGESTED.

SUPPLY NOT INCLUDED WITH FIXTURE AND MUST BE ORDERED SEPARATELY.

IMPORTANT: Dimensions of fixtures are nominal and may vary within the range of tolerance established by ANSI Standard A112.19.2

These measurements are subject to change or cancellation. No responsibility is assumed for use of superseded or voided pages.

**Compliance Certifications -**

**Meets or Exceeds the Following Specifications:**

- ASME A112.19.2M (and 19.6M) for Vitreous China Fixtures - includes Flush Performance, Ball Pass Diameter, Trap Seal Depth and all Dimensions

**COLONY™ ROUND FRONT TOILET**

**2388.014**

- Vitreous china
- Low-consumption (6.0 Lpf/1.6 gpf)
- 14" roughing-in
- Round front siphon action jetted bowl
- Fully glazed 2" trapway
- American Standard Aquameter™ Water Control
- Large 10" x 8" water surface area
- Color-matched trip lever
- Sanitary bar on bowl
- 2 bolt caps
- 100% factory flush tested

**3338.012 Bowl**

**4314.016 Tank**

Nominal Dimensions:

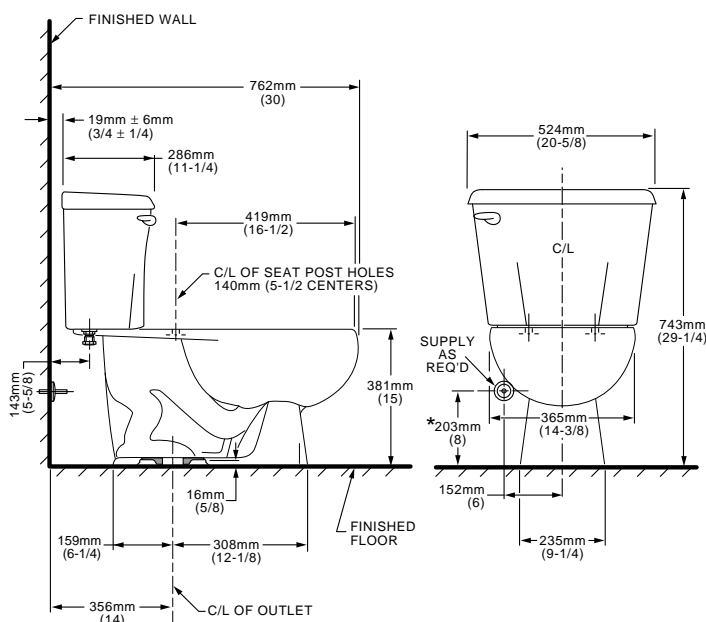
762 x 524 x 743mm (30" x 20-5/8" x 29-1/4")

Fixture only, seat and supply by others



**To Be Specified**

- ☐ Color:
- ☐ Seat: American Standard #5322.011 "Rise and Shine" (with easy to clean lift-off hinge system) solid plastic closed front seat with cover. See page TB-001.
- ☐ Seat: American Standard #5308.014 "Laurel" molded closed front seat with cover. See page TB-001.
- ☐ Alternate Seat:
- ☐ Supply with stop:



**NOTES:**

THIS COMBINATION IS DESIGNED TO ROUGH-IN AT A MINIMUM DIMENSION OF 356MM (14") FROM FINISHED WALL TO C/L OF OUTLET.

\* DIMENSION SHOWN FOR LOCATION OF SUPPLY IS SUGGESTED.

SUPPLY NOT INCLUDED WITH FIXTURE AND MUST BE ORDERED SEPARATELY.

IMPORTANT: Dimensions of fixtures are nominal and may vary within the range of tolerance established by ANSI Standard A112.19.2

These measurements are subject to change or cancellation. No responsibility is assumed for use of superseded or voided pages.

**Compliance Certifications -**

**Meets or Exceeds the Following Specifications:**

- ASME A112.19.2M (and 19.6M) for Vitreous China Fixtures - includes Flush Performance, Ball Pass Diameter, Trap Seal Depth and all Dimensions