

## ESTATE® PEDESTAL SINK

- ☐ **0900.800** Faucet holes on 8" (203mm) centers (Illustrated)
- ☐ **0900.400** Faucet holes on 4" (102mm) centers
- ☐ **0900.100** Center hole only
  - Fine fireclay
  - Classic styled rectangular pedestal lavatory
  - Rear overflow
  - Supplied with mounting kit
  - Right Height® for greater comfort during use
  - Faucet ledge with large deck area (faucet not included)
  - Basin has flat bottom to also allow use as an **above counter** sink or a **drop-in** sink (with u-shaped cut out)
  - **Design coordinates with Estate® VorMax™ Toilet**
  - **Available Exclusively at Ferguson® Showrooms**

### Nominal Dimensions:

24" x 20" x 36-5/8"  
(610 x 508 x 930mm)

- ☐ **0900.008** Pedestal top-8" (203mm) centers
- ☐ **0900.004** Pedestal top-4" (102mm) centers
- ☐ **0900.001** Pedestal top-center hole only
- ☐ **0029.000** Pedestal only

### Bowl sizes:

15-1/16" (383mm) wide,  
12-5/16" (313mm) front to back,  
5-1/2" (140mm) deep

### Compliance Certifications -

#### Meets or Exceeds the Following Specifications:

- ASME A112.19.2 - 2008/CSA B45.1-08

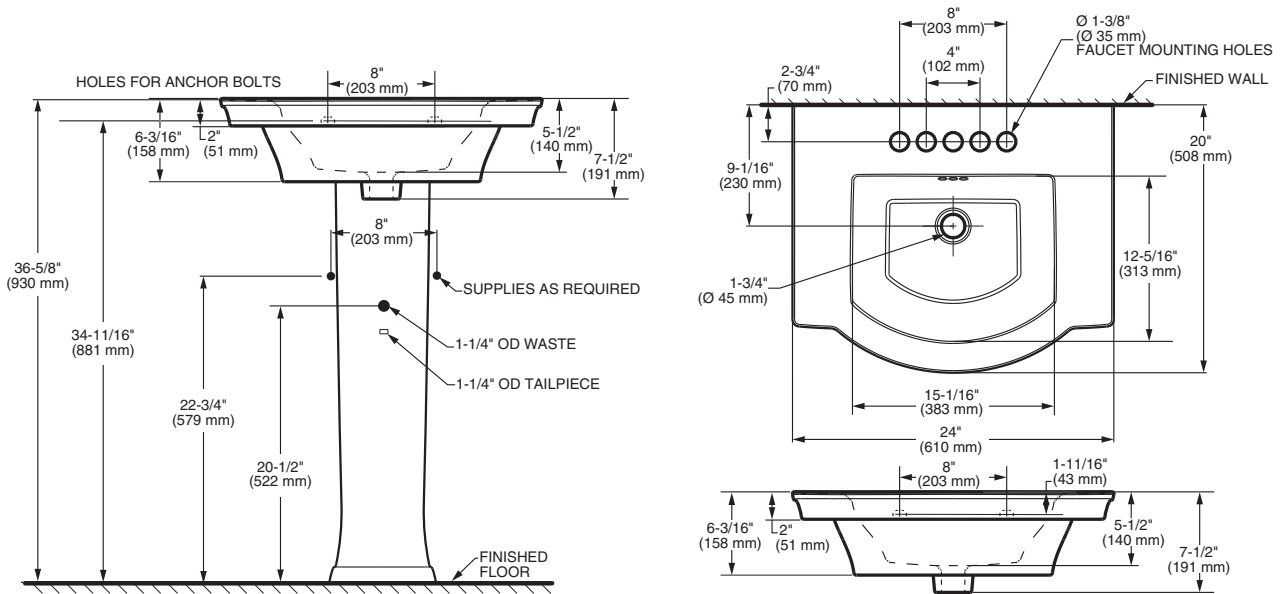


SEE REVERSE FOR ROUGHING-IN DIMENSIONS

#### To Be Specified:

- ☐ Color: ☐ White ☐ Linen
- ☐ Faucet Finish:
- ☐ Supplies:
- ☐ 1-1/4" Trap:
- ☐ Nipple:

\* See faucet section for additional models available



**NOTES:**

\* DIMENSIONS SHOWN FOR LOCATION OF SUPPLIES AND "P" TRAPS ARE SUGGESTED.

▼ PEDESTAL ANCHORING SCREWS NOT INCLUDED.

■ SUITABLE FOR REINFORCEMENT ONLY. ACTUAL DIMENSIONS MUST BE TAKEN FROM FIXTURE.

FITTING NOT INCLUDED AND MUST BE ORDERED SEPARATELY. PROVIDE SUITABLE REINFORCEMENT FOR ALL WALL SUPPORTS. INSTALLATION INSTRUCTIONS SUPPLIED WITH LAVATORY.

**IMPORTANT:** Dimensions of fixtures are nominal and may vary within the range of tolerance established by ANSI Standard A112.19.2. These measurements are subject to change or cancellation. No responsibility is assumed for use of superseded or voided pages.

**PORTSMOUTH MIRROR**

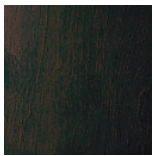
❑ **9210.101**

- Rectangular mirror with poplar solid frame
- Coordinates with the Portsmouth Collection
- Available in a Dark Chocolate or White finish

**Nominal Dimensions:**

25" x 1-3/4" (635 x 44mm)

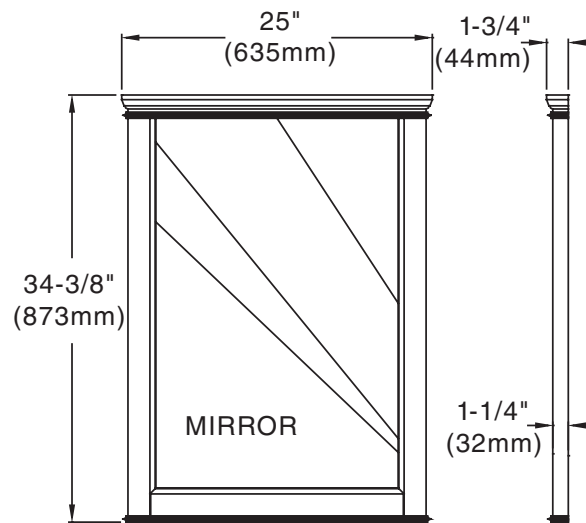
34-3/8" height (873mm)



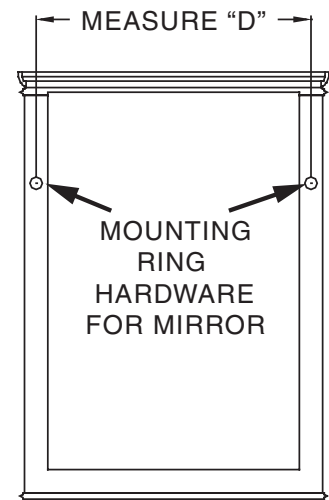
322  
Dark Chocolate



020  
White



FRONT VIEW

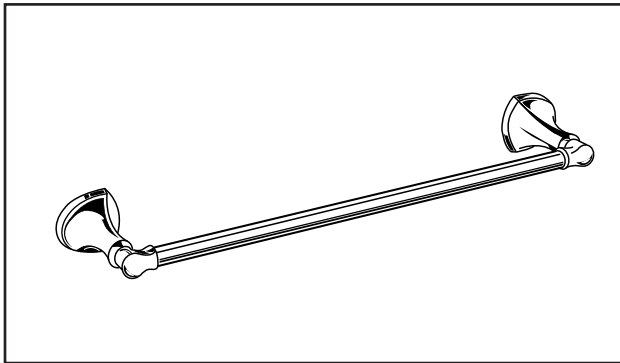


BACK VIEW

**NOTES:**

PROVIDE SUITABLE REINFORCEMENT FOR ALL WALL SUPPORTS.

**IMPORTANT:** Dimensions of fixtures are nominal and may vary within the range of tolerances established by ANSI Standard A112.19.2. These measurements are subject to change or cancellation. No responsibility is assumed for use of superseded or voided pages.



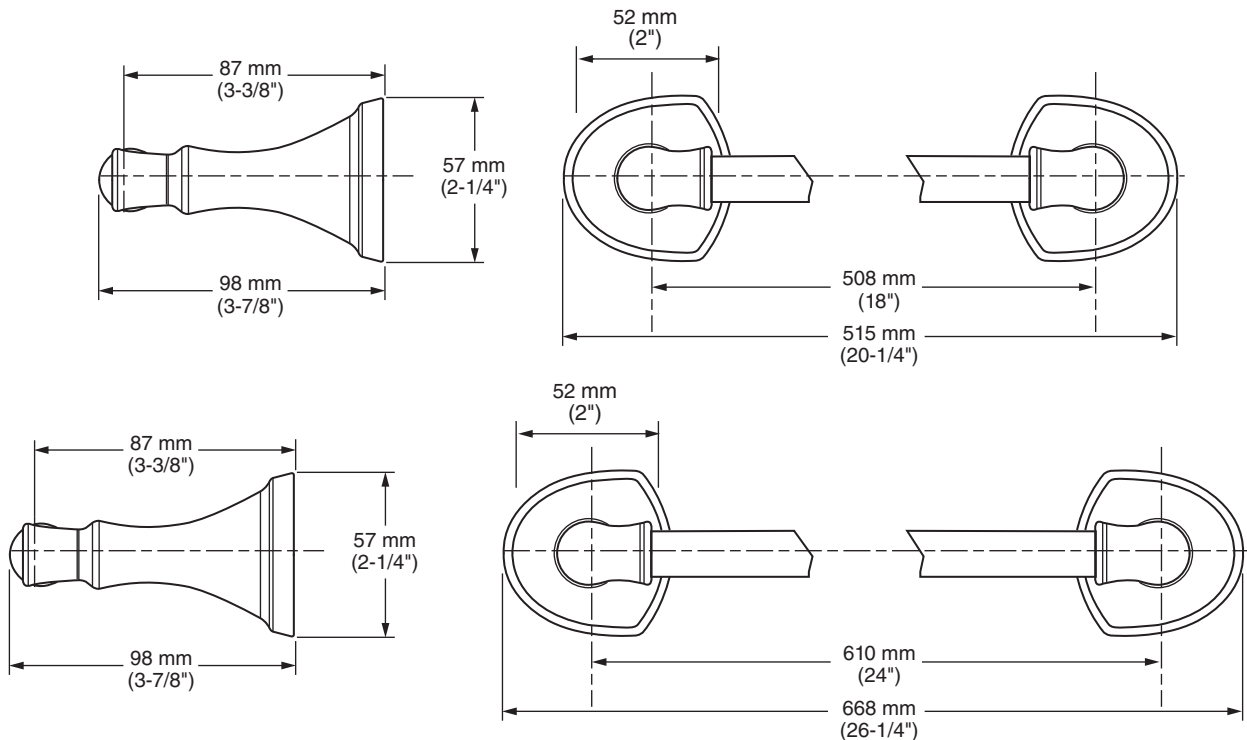
**MODEL NUMBER:**

❑ 7722.018 - 18" Towel Bar

❑ 7722.024 - 24" Towel Bar

**Available Finishes**

002	Polished Chrome
013	PVD Polished Nickel
278	Legacy Bronze
295	PVD Satin Nickel



**PRODUCT FEATURES:**

**Materials of Construction:** Metal construction for durability & long life. Brass rod.

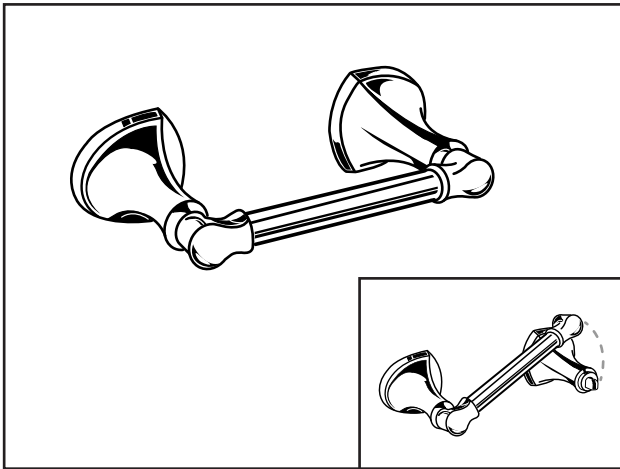
**Concealed Mounting:** No exposed set screws.

**Easy to Install**

- Coordinates with Estate® Suite of fixtures.
- Available Exclusively at Ferguson® Showrooms.

**SUGGESTED SPECIFICATION**

18" and 24" Towel Bar shall feature metal construction. Rod shall be brass. Shall feature concealed mounting with no exposed set screws. Towel Bar shall be American Standard Model # 7722. ....

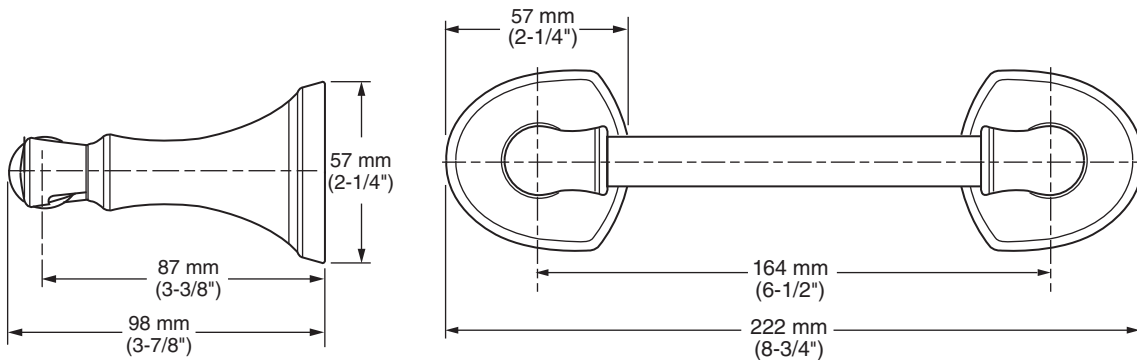


**MODEL NUMBER:**

□ 7722.230 - Pivoting Toilet Paper Holder

**Available Finishes**

002	Polished Chrome
013	PVD Polished Nickel
278	Legacy Bronze
295	PVD Satin Nickel



**PRODUCT FEATURES:**

**Materials of Construction:** Metal construction for durability & long life.

**Concealed Mounting:** No exposed set screws.

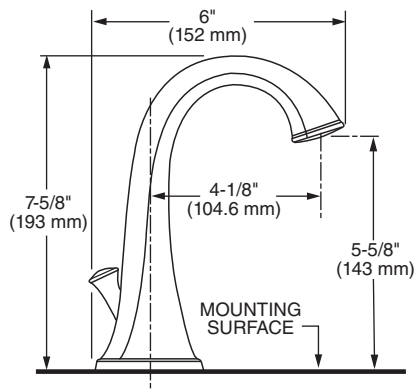
**Easy to Install**

**Easy to Use:** Pivoting toilet paper bar for quick and easy replacement.

- Coordinates with Estate® Suite of fixtures.
- Available Exclusively at Ferguson® Showrooms.

**SUGGESTED SPECIFICATION**

Toilet Paper Holder shall feature metal construction. Shall feature concealed mounting with no exposed set screws. Toilet Paper Holder bar shall pivot. Toilet Paper Holder shall be American Standard Model # 7722.230.\_\_\_\_\_.



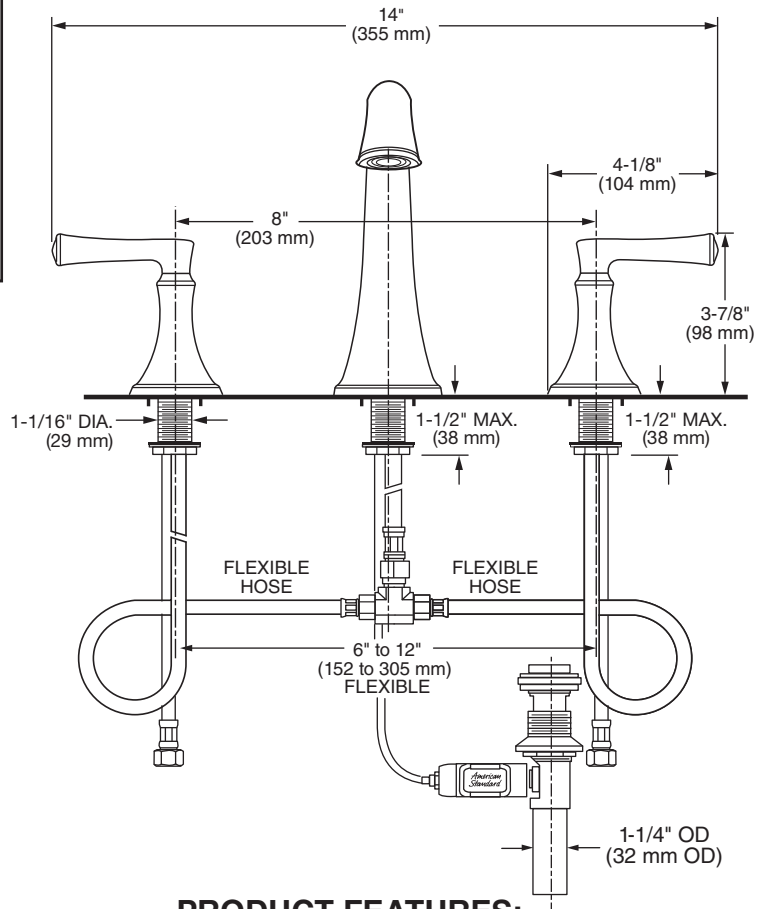
### GENERAL DESCRIPTION:

Cast brass valve bodies with flexible hose connections for 6" to 12" (152 mm to 305 mm) installations. 1/4 turn washerless ceramic disc valve cartridges. All metal spout. Cast brass inlet shanks and 24" stainless steel braided flexible supply hoses with 3/8" compression connectors. 20 inch (500 mm) long flexible stainless steel drain cable is pre-assembled to faucet body. Metal Speed Connect® drain body with 1-1/4 inch (32 mm) tail piece. 1.2 gpm/4.5 L/min. maximum flow rate.

### MODEL NUMBER:

#### □ 7722.801 Estate Widespread

Metal Speed Connect® pop-up drain. Metal lever handles.



### PRODUCT FEATURES:

**Ceramic Disc Valve Cartridge:** Assures a lifetime of drip-free performance.

#### **Exclusive Speed Connect Widespread System:**

##### **Metal Drain:**

- Fewer parts. Installs in less time.
- No adjustments required - seals the first time, every time.
- Flexible stainless steel cable - installs effortlessly in tight spaces.
- Pre-assembled handles and hoses drop in from top.

**Lead Free:** Faucet contains ≤ 0.25% total lead content by weighted average.

- Coordinates with Estate® Suite of fixtures.
- Available Exclusively at Ferguson® Showrooms.

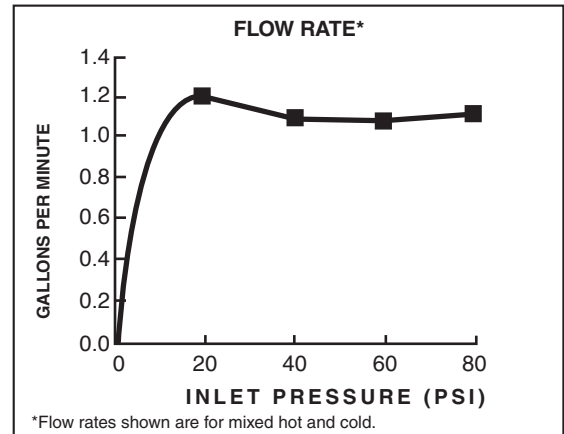
### SUGGESTED SPECIFICATION


Two-handle widespread lavatory faucet shall feature cast brass valve bodies with flexible hose connections for 6" to 12" installations. Shall also feature 1/4 turn washerless ceramic disc valve cartridges. Shall also feature a metal drain body with stainless steel cable actuation. Fitting shall be American Standard Model #7722.801.\_\_\_\_\_.

## CODES AND STANDARDS

These products meet or exceed the following codes and standards:

**ANSI A117.1**  
**ASME A112.18.1**  
**CSA B125.1**  
**NSF 61/Section 9**  
**NSF 372**



Product Number	Description	Finish Options			
		Polished Chrome	PVD Polished Nickel	Legacy Bronze	PVD Satin Nickel
		002	013	278	295
7722.801	Estate™ Widespread with metal Speed Connect® pop-up drain. Metal lever handles. 				



Meets the American Disabilities Act Guidelines and **ANSI A117.1** Requirements for the physically challenged.