

**YORKVILLE FloWise™ ELONGATED
PRESSURE-ASSISTED TOILET
1.1 gpf/ 4.2 Lpf**

- 2876.100**
 - Vitreous china
 - **Floor-mounted, back-outlet toilet**
 - High Efficiency, Ultra Low-consumption (1.1 gpf/4.2 Lpf)
 - EverClean® surface inhibits the growth of stain- and odor-causing bacteria, mold, and mildew on the surface
 - Meets EPA WaterSense® criteria
 - Elongated bowl
 - Pressure-assisted siphon jet flush action
 - Fully-glazed 2-1/8" trapway
 - 10 x 12" water surface area
 - Close-coupled Flushometer tank*
 - Metal chrome trip lever
 - Speed Connect® tank/bowl coupling system
 - Sanitary dam on bowl
 - 4 bolt caps
 - 100% factory flush tested



- 3701.100** Elongated bowl with 4 bolt caps
- 3701.001** Same as above, Universal Bowl
- 4142.100** Flushometer tank complete with coupling components

Nominal Dimensions:

752 x 516 x 742mm (29-3/4" x 20-1/2" x 29-1/4")

Fixture only, seat and supply by others
Recommended working pressure range
25 psi - 80 psi

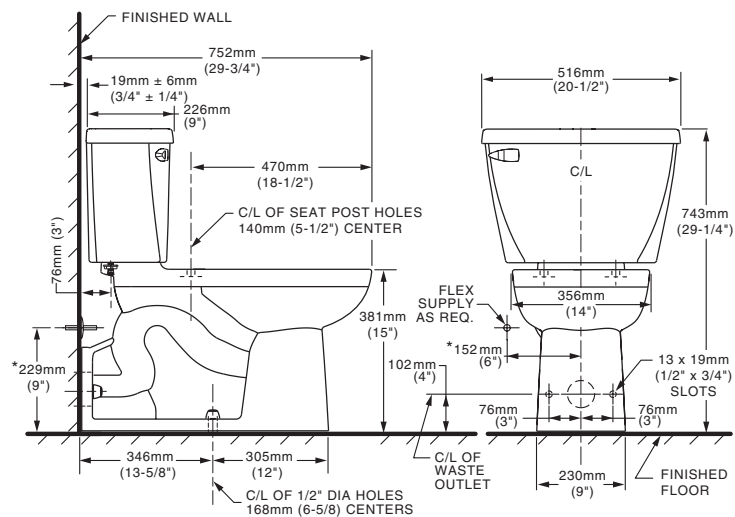
Alternate Configurations Available:

- 4142.601** Tank and tank cover only with tank cover locking device
- 4142.801** Tank and tank cover only with right hand trip lever
- 4142.901** Tank complete with right hand trip lever and tank cover locking device

Compliance Certifications -

Meets or Exceeds the Following Specifications:

- ASME A112.19.2-2008/CSA B45.1-08 for Vitreous China Fixtures
- US EPA WaterSense® Specification for HET's



NOTES:

WASTE OUTLET SEAL RING MUST BE NEOPRENE OR GRAPHITE-FELT (WAX RING NOT RECOMMENDED).

SUPPLY NOT INCLUDED WITH FIXTURE AND MUST BE ORDERED SEPARATELY.

DISTANCE FROM FLOOR TO CLOSET FLANGE CENTERLINE (ROUGH-IN) MUST BE 4" (102 MM) WITH FLANGE SURFACE FLUSH TO 1/16" (1.5MM) MAX. BEYOND FINISHED WALL.

* DIMENSION SHOWN FOR LOCATION OF SUPPLY IS SUGGESTED. FOR ADDITIONAL INFORMATION REFER TO INSTALLATION INSTRUCTIONS SUPPLIED.

IMPORTANT: Dimensions of fixtures are nominal and may vary within the range of tolerances established by ASME A112.19.2-2008 / CSH B45.1-08. These measurements are subject to change or cancellation. No responsibility is assumed for use of superseded or voided pages.

To Be Specified:

- Color: White Bone Linen Black
- Seat: American Standard #5324.019 "Rise and Shine" (with easy to clean lift-off hinge system) solid plastic closed front seat with cover.
- American Standard #5321.110 EverClean® seat with Slow Close snap-off hinges.
- Alternate Seat:
- Supply with Stop:



CHAMPION® SLOW-CLOSE TOILET SEATS

- ❑ **5325.010** Elongated
- ❑ **5330.010** Round Front

- Solid plastic seat
- Closed seat with cover
- Convenient Slow-Close features prevents seat from slamming
- Unique Easy Lift off feature allows for quick removal and replacement of seat and cover for easy cleaning of toilet without any tools
- Seat complete with bolts and dual-faced adhesive
- Fits any standard elongated (5325.010) or round front (5330.010) toilets



AVAILABLE REPLACEMENT PARTS

- **760084-0070A** Toilet Seat Bolt Kit (complete with bolts, nuts and washers)



SHOWN: CONVENIENT SLOW CLOSE FEATURE



SHOWN: UNIQUE EASY LIFT OFF FEATURE

- Left - rotate hinge counter clockwise to unlock
- Center - seat removed from hinge system
- Right - rotate hinges clockwise to lock seat in place