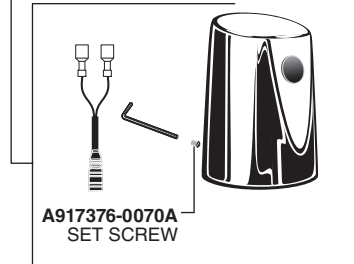


Ultima™ Selectronic® Battery Powered Urinal Flush Valve, Piston-Type

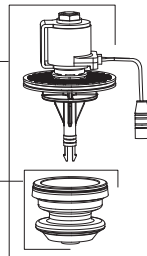
Standard Battery (6063. Series)

M970688-0020A
COVER ASSEMBLY
DOES NOT INCLUDE SENSOR



A917376-0070A
SET SCREW

M970694-0070A
SOLENOID & PISTON
SUB ASSEMBLY



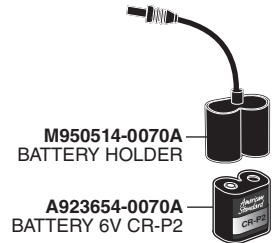
M970684-0070A
PISTON ASSEMBLY

MODEL NUMBERS

6063.013
6063.051
6063.101
6062.601

Power Source

Standard Battery
6063. Series



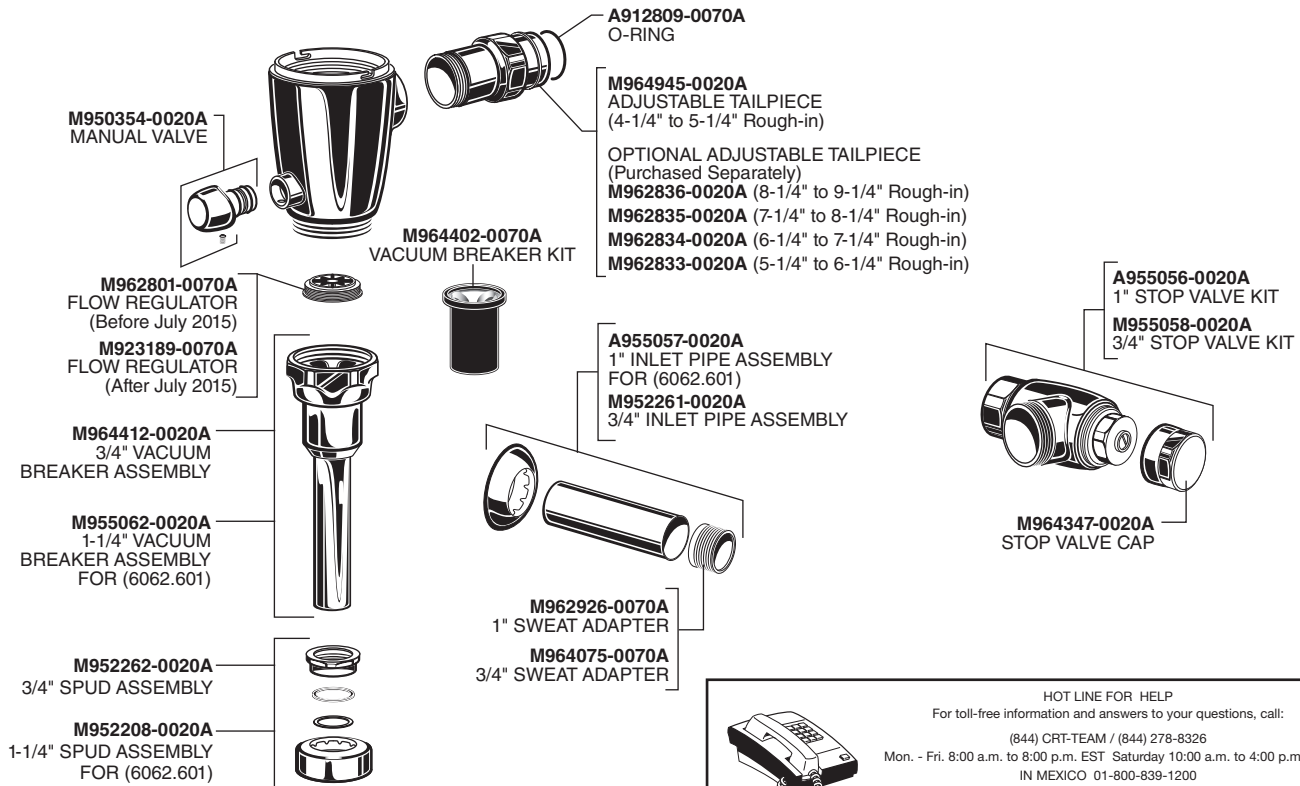
M950514-0070A
BATTERY HOLDER

A923654-0070A
BATTERY 6V CR-P2

M970682-0070130A
SENSOR ASSEMBLY (0.125 gpf)

M970682-0070500A
SENSOR ASSEMBLY (0.5 gpf)

M970682-0071000A
SENSOR ASSEMBLY (1.0 gpf)



PART OF LIXIL

HOT LINE FOR HELP
For toll-free information and answers to your questions, call:
(844) CRT-TEAM / (844) 278-8326
Mon. - Fri. 8:00 a.m. to 8:00 p.m. EST Saturday 10:00 a.m. to 4:00 p.m. EST
IN MEXICO 01-800-839-1200
IN CANADA 1-800-387-0369 (TORONTO 1-905-306-1093)
Weekdays 8:00 a.m. to 7:00 p.m. EST

Product names listed herein are trademarks of AS America, Inc. ©2021

To learn more about American Standard Selectronic® Products visit our website at:
www.americanstandard-us.com or e-mail us at: CRTEAM@americanstandard.com