

HAMILTON™ ELONGATED SPACE-SAVING ONE-PIECE TOILET

2092.017

- Vitreous china
- Low-consumption (6.0 Lpf/1.6 gpf)
- Low-profile one-piece toilet
- Elongated siphon action bowl and tank with unique space saving feature
- Fits into the same space as a conventional round front toilet
- Internal trapway area fully glazed
- Color-matched trip lever
- Includes color-matched Rise and Shine™ plastic seat and cover (#5324.019) with easy-to-clean, lift-off hinge system.
- 2 bolt caps
- 100% factory flush tested

Nominal Dimensions:

692 x 464 x 635mm
 (27-1/4" x 18-1/4" x 25")

Fixture only, supply by others

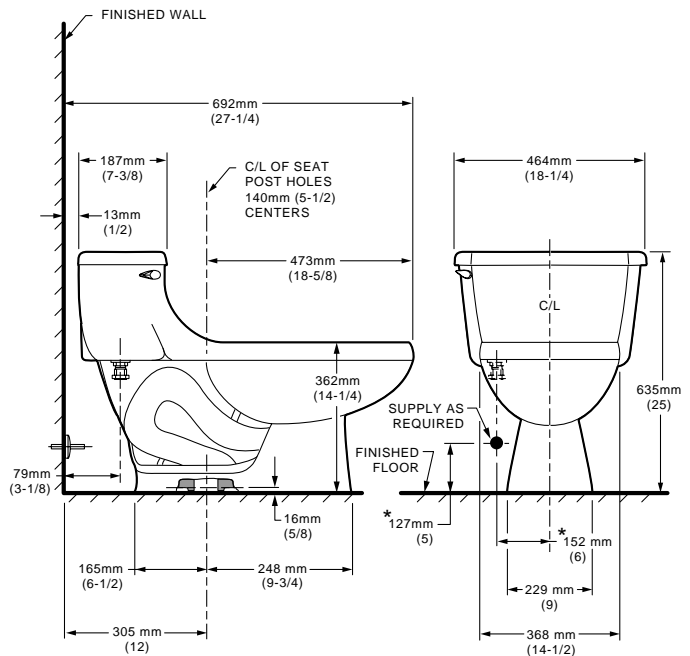
Compliance Certifications - Meets or Exceeds the Following Specifications:

- ASME A112.19.2M (and 19.6M) for Vitreous China Fixtures - includes Flush Performance, Ball Pass Diameter, Trap Seal Depth and all Dimensions



To Be Specified

- Color:
- Supply with stop:



NOTES:

THIS TOILET IS DESIGNED TO ROUGH-IN AT A MINIMUM DIMENSION OF 305MM (12") FROM FINISHED WALL TO C/L OF OUTLET.

* DIMENSIONS SHOWN FOR LOCATION OF SUPPLY ARE SUGGESTED.

SUPPLY NOT INCLUDED WITH FIXTURE AND MUST BE ORDERED SEPARATELY.

IMPORTANT: Dimensions of fixtures are nominal and may vary within the range of tolerance established by ANSI Standard A112.19.2.

These measurements are subject to change or cancellation. No responsibility is assumed for use of superseded or voided pages.